

SANMH1
MAN TA SAN 4 D TIF CL
4" DIA.
STA 10+00.00
N 1899751.4
E 1002192.0
RIM EL 774.50
INV EL 754.35 (N)
INV EL 754.2± (E,W)

SANMH2
MAN TA SAN 4 D TIF CL
4" DIA.
STA 11+33.83
N 1899885.1
E 1002190.9
RIM EL 775.50
INV EL 754.53 (N,S)

SANMH3
MAN TA SAN 4 D TIF CL
4" DIA.
STA 13+88.93
N 1900138.7
E 1002218.0
RIM EL 775.50
INV EL 754.93 (N,S)

SANMH4
MAN TA SAN 4 D TIF CL
4" DIA.
STA 15+70.67
N 1900307.9
E 1002284.5
RIM EL 780.50
INV EL 755.20 (E,S)

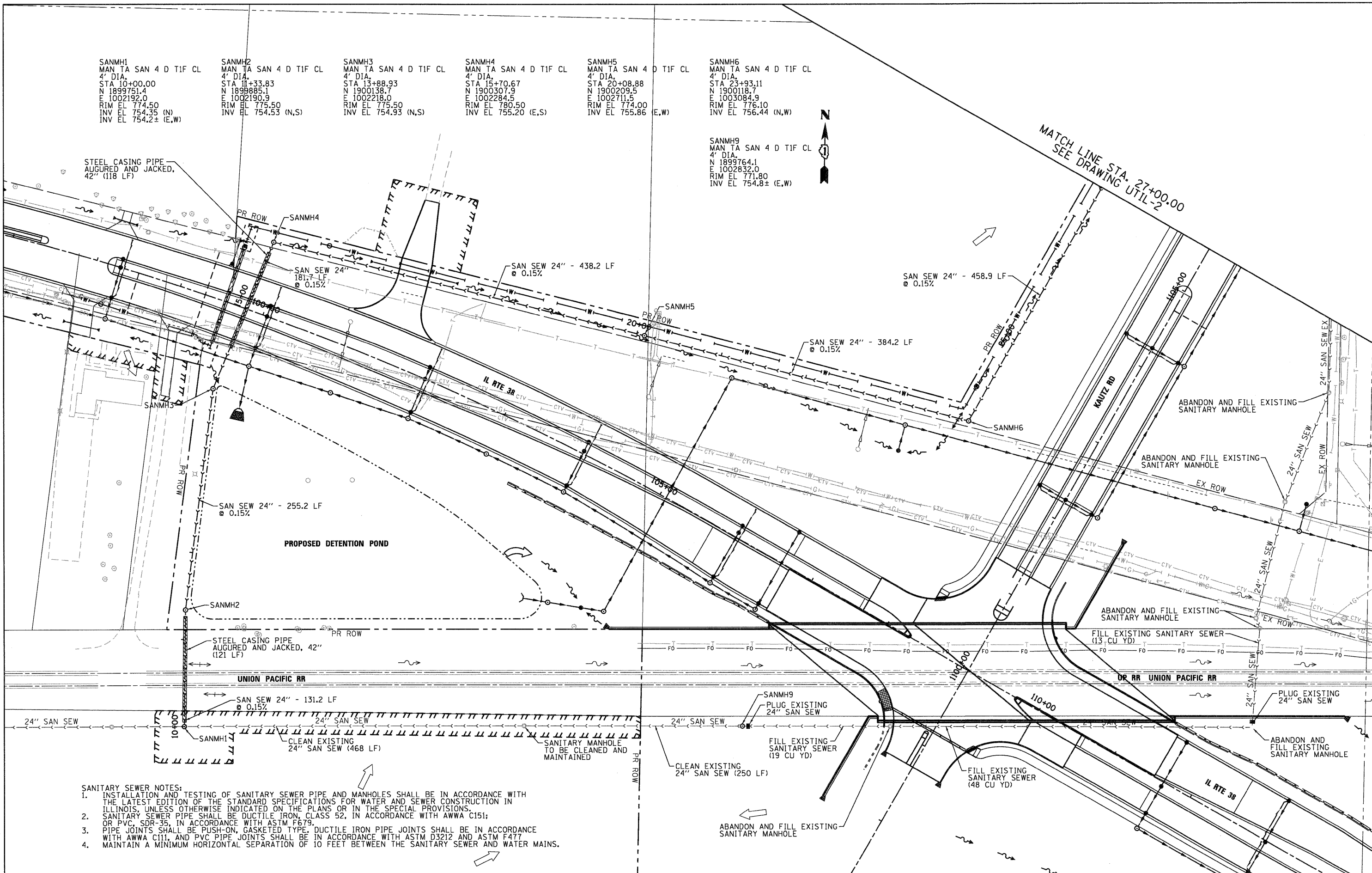
SANMH5
MAN TA SAN 4 D TIF CL
4" DIA.
STA 20+08.88
N 1900209.5
E 1002711.5
RIM EL 774.00
INV EL 755.86 (E,W)

SANMH6
MAN TA SAN 4 D TIF CL
4" DIA.
STA 23+93.11
N 1900118.7
E 1003084.9
RIM EL 776.10
INV EL 756.44 (N,W)

SANMH9
MAN TA SAN 4 D TIF CL
4" DIA.
N 1899764.1
E 1002832.0
RIM EL 771.80
INV EL 754.8± (E,W)



MATCH LINE STA. 27+00.00
SEE DRAWING UTIL-2



- SANITARY SEWER NOTES:**
1. INSTALLATION AND TESTING OF SANITARY SEWER PIPE AND MANHOLES SHALL BE IN ACCORDANCE WITH THE LATEST EDITION OF THE STANDARD SPECIFICATIONS FOR WATER AND SEWER CONSTRUCTION IN ILLINOIS, UNLESS OTHERWISE INDICATED ON THE PLANS OR IN THE SPECIAL PROVISIONS.
 2. SANITARY SEWER PIPE SHALL BE DUCTILE IRON, CLASS 52, IN ACCORDANCE WITH AWWA C151; OR PVC, SDR-35, IN ACCORDANCE WITH ASTM F679.
 3. PIPE JOINTS SHALL BE PUSH-ON, GASKETED TYPE. DUCTILE IRON PIPE JOINTS SHALL BE IN ACCORDANCE WITH AWWA C111, AND PVC PIPE JOINTS SHALL BE IN ACCORDANCE WITH ASTM D3212 AND ASTM F477
 4. MAINTAIN A MINIMUM HORIZONTAL SEPARATION OF 10 FEET BETWEEN THE SANITARY SEWER AND WATER MAINS.

McDonough Associates Inc.
 Engineers/Architects
 130 East Randolph Street, Chicago, Illinois 60601

FILE NAME = 0168122-SHT-UTIL01.dgn	USER NAME = E-rig	DESIGNED - YSK	REVISED -	STATE OF ILLINOIS DEPARTMENT OF TRANSPORTATION	SANITARY SEWER RELOCATION PLAN	F.A.P. RTE. 347	SECTION LY (HB & VB)	COUNTY DUPAGE/KANE	TOTAL SHEETS 421	SHEET NO. 96		
PLOT SCALE = 1/50	CHECKED - E.JG	DATE - 12/09/11	REVISED -			SCALE: 1"=50'	SHEET NO. 1 OF 3 SHEETS	STA.	TO STA.	UTIL-1 FED. ROAD DIST. NO. 1 [ILLINOIS] FED. AID PROJECT		
PLOT DATE = 12/9/2011	DATE - 12/09/11	REVISED -	REVISED -									