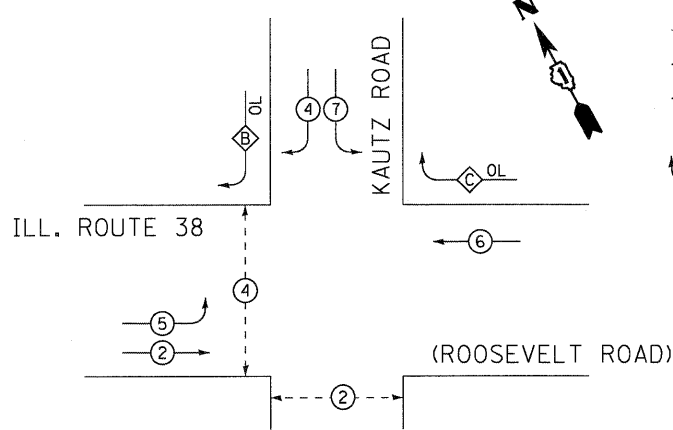
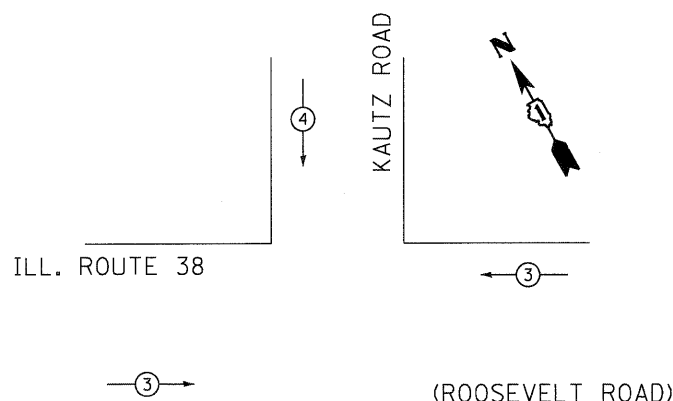


**CONTROLLER SEQUENCE**

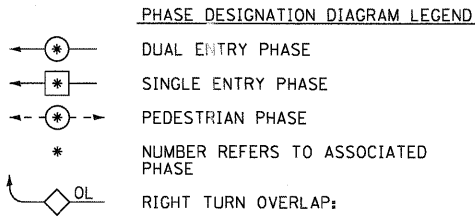


**PHASE DESIGNATION DIAGRAM**

**EMERGENCY VEHICLE PREEMPTION SEQUENCE**



PROPOSED EMERGENCY VEHICLE PREEMPTORS		
EMERGENCY VEHICLE PREEMPTORS	3	4
MOVEMENT	←→	↓



OVERLAP LETTER	PERMISSIVE PHASE	PROTECTED PHASE
B	= 4	+ 5
C	= 6	+ 7

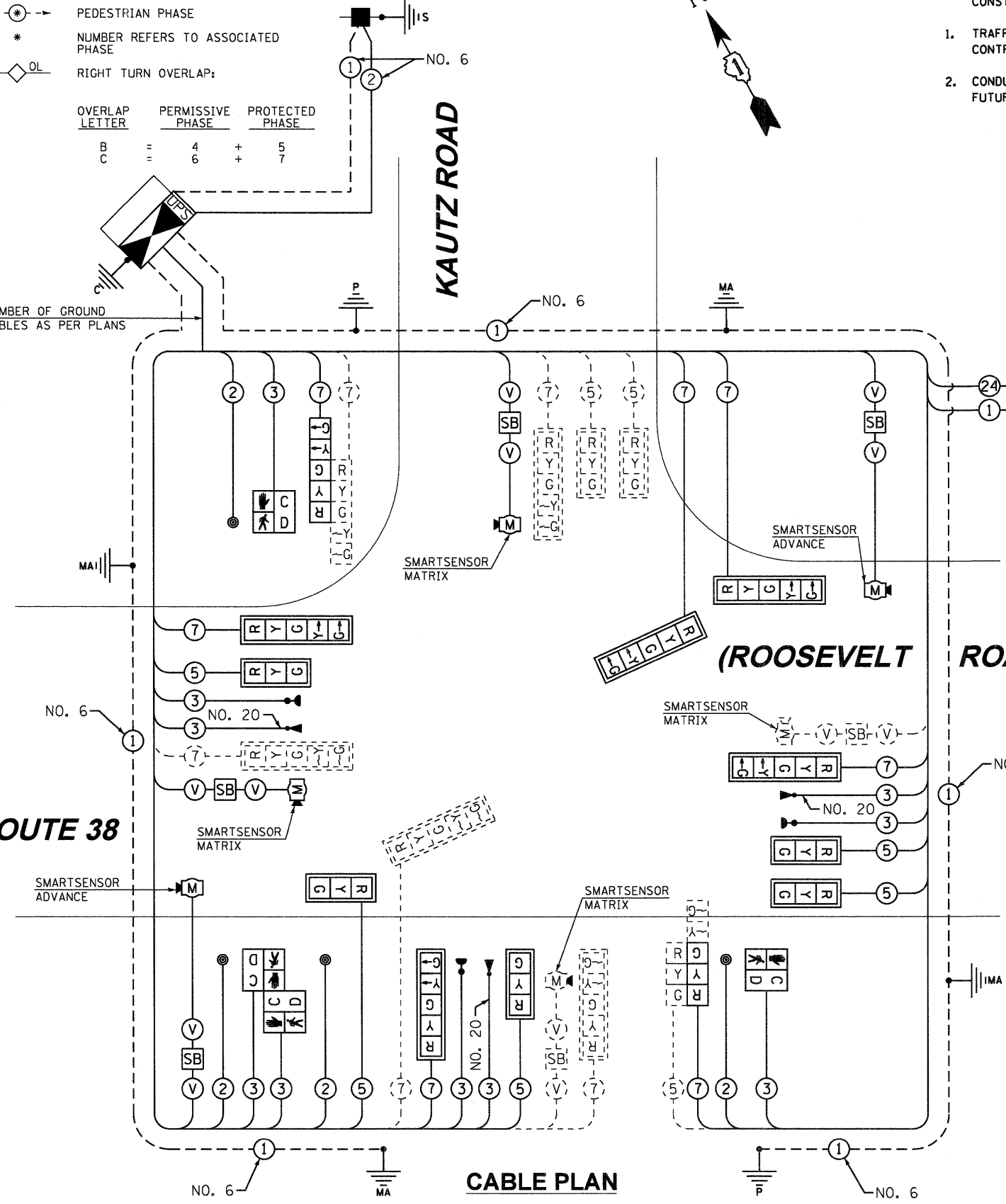
NUMBER OF GROUND CABLES AS PER PLANS

**ILL. ROUTE 38**

**KAUTZ ROAD**

**(ROOSEVELT ROAD)**

**CABLE PLAN**



**CONSTRUCTION NOTES:**

- TRAFFIC SIGNAL EQUIPMENT SHOWN AS DASHED SHALL BE INSTALLED, UNDER SEPERATE CONTRACT, AS PART OF THE FUTURE 4TH LEG IMPROVEMENT OF KAUTZ ROAD.
- CONDUIT SHALL BE INSTALLED TO ACCOMODATE TRAFFIC SIGNAL EQUIPMENT FOR THE FUTURE 4TH LEG IMPROVEMENT OF KAUTZ ROAD.

THE TRAFFIC SIGNAL CONTROL EQUIPMENT FOR THIS PROJECT SHALL BE "EAGLE" TO MATCH EXISTING ADJACENT SYSTEM.

THE END OF THE TRACER CABLE SHALL BE CONTINUOUS AND EXTEND INTO THE CONTROLLER CABINET.

PROP. INTERCONNECT TO KRESS ROAD

**SCHEDULE OF QUANTITIES**

ITEM	UNIT	TOTAL
SIGN PANEL - TYPE 1	SO FT	13.5
SIGN PANEL - TYPE 2	SO FT	35
SERVICE INSTALLATION - POLE MOUNTED	EACH	1
UNDERGROUND CONDUIT, GALVANIZED STEEL, 2" DIA.	FOOT	95
UNDERGROUND CONDUIT, GALVANIZED STEEL, 2 1/2" DIA.	FOOT	35
UNDERGROUND CONDUIT, GALVANIZED STEEL, 3" DIA.	FOOT	44
UNDERGROUND CONDUIT, GALVANIZED STEEL, 4" DIA.	FOOT	742
CONDUIT ATTACHED TO STRUCTURE, 3" DIA., GALVANIZED STEEL	FOOT	20
CONDUIT ATTACHED TO STRUCTURE, 4" DIA., GALVANIZED STEEL	FOOT	320
JUNCT. BOX, STAIN. STL, ATTACHED TO STRUCT., 24"x24"x10"	EACH	2
HANDHOLE	EACH	3
DOUBLE HANDHOLE	EACH	2
MAINTENANCE OF EXISTING TRAFFIC SIGNAL INSTALLATION	EACH	1
TRANSCEIVER - FIBER OPTIC	EACH	1
ELECTRIC CABLE IN CONDUIT, SIGNAL NO. 14 2C	FOOT	1481
ELECTRIC CABLE IN CONDUIT, SIGNAL NO. 14 3C	FOOT	2757
ELECTRIC CABLE IN CONDUIT, SIGNAL NO. 14 5C	FOOT	2380
ELECTRIC CABLE IN CONDUIT, SIGNAL NO. 14 7C	FOOT	2426
ELECTRIC CABLE IN CONDUIT, SERVICE, NO. 6 2 C	FOOT	118
ELECTRIC CABLE IN CONDUIT, EQUIP. GRND. CONDCTR., NO. 6 1C	FOOT	1230
TRAFFIC SIGNAL POST, GALVANIZED STEEL 16 FT.	EACH	2
STEEL MAST ARM ASSEMBLY AND POLE, 48 FT.	EACH	1
STEEL MAST ARM ASSEMBLY AND POLE, 54 FT.	EACH	1
CONCRETE FOUNDATION, TYPE A	FOOT	8
CONCRETE FOUNDATION, TYPE C	FOOT	4
CONCRETE FOUNDATION, TYPE E 36-INCH DIAMETER	FOOT	28
SIGNAL HEAD, LED, 1-FACE, 3-SECTION, MAST-ARM MOUNTED	EACH	5
SIGNAL HEAD, LED, 1-FACE, 3-SECTION, BRACKET MOUNTED	EACH	1
SIGNAL HEAD, LED, 1-FACE, 5-SECTION, BRACKET MOUNTED	EACH	1
SIGNAL HEAD, LED, 1-FACE, 5-SECTION, MAST-ARM MOUNTED	EACH	5
PED. SIGNAL HEAD, LED, 1F, BM WITH COUNTDOWN TIMER	EACH	2
PED. SIGNAL HEAD, LED, 2F, BM WITH COUNTDOWN TIMER	EACH	1
TRAFFIC SIGNAL BACKPLATE, LOUVERED, ALUMINUM	EACH	10
LIGHT DETECTOR	EACH	3
LIGHT DETECTOR AMPLIFIER	EACH	1
PEDESTRIAN PUSH-BUTTON	EACH	4
REMOVE EXISTING TRAFFIC SIGNAL EQUIPMENT	EACH	1
REMOVE EXISTING HANDHOLE	EACH	12
REMOVE EXISTING CONCRETE FOUNDATION	EACH	11
MICROWAVE VEHICLE SENSOR (SMARTSENSOR ADVANCE)	EACH	2
MICROWAVE VEHICLE SENSOR (SMARTSENSOR MATRIX)	EACH	2
FULL-ACTUATED CONTROLLER AND CABINET, TYPE IV, SPECIAL	EACH	1
UNINTERRUPTABLE POWER SUPPLY SPECIAL	EACH	1
ELECTRIC CABLE IN CONDUIT NO. 20 3/C, TWISTED, SHIELDED	FOOT	1259
STEEL MA ASSEMBLY AND POLE WITH DUAL MA, 38' AND 60'	EACH	1
STEEL MA ASSEMBLY AND POLE WITH DUAL MA, 38' AND 62'	EACH	1

**I.D.O.T. TRAFFIC SIGNAL INSTALLATION ELECTRICAL SERVICE REQUIREMENTS**

TYPE	NO. OF LAMPS	WATTAGE	INCAND.	LED	% OPERATION	TOTAL WATTAGE
SIGNAL (RED)	12	135	17		0.50	102.0
(YELLOW)	12	135	25		0.25	75.0
(GREEN)	12	135	15		0.25	45.0
ARROW	12	135	12		0.10	14.4
PED. SIGNAL	4	90	25		1.00	100.0
CONTROLLER	1	100	100		1.00	100.0
UPS	1	25	25		1.00	25.0
ILLUM. SIGN		252			0.05	
FLASHER			25		0.50	
ENERGY COST TO:						TOTAL = 461.4

ILLINOIS DEPARTMENT OF TRANSPORTATION  
 201 WEST CENTER COURT  
 SCHAUMBURG, ILLINOIS 60196-1096  
 ENERGY SUPPLY: CONTACT: MARK GLOECKLE  
 PHONE: (630) 691-4529  
 COMPANY: COMED

FILE NAME = 0160122-SHT-TS05.dgn	USER NAME = E-rjcg	DESIGNED - DMB	REVISED -
	PLOT SCALE = 1:200	DRAWN - DMB	REVISED -
	PLOT DATE = 12/9/2011	CHECKED -	REVISED -
		DATE - 12/09/11	REVISED -

**STATE OF ILLINOIS DEPARTMENT OF TRANSPORTATION**

**SCHEDULE OF QUANTITIES, CABLE PLAN, PHASE DESIGNATION DIAGRAM AND EMERGENCY VEHICLE PREEMPTION SEQUENCE**  
 ILL. ROUTE 38 AND KAUTZ ROAD  
 SCALE: N.T.S. SHEET NO. 5 OF 17 SHEETS STA. TO STA.

F.A.P RTE. 347	SECTION LY (HB & VB)	COUNTY DUPAGE/KANE	TOTAL SHEETS 421	SHEET NO. 143
TS-5		CONTRACT NO. 60122		
FED. ROAD DIST. NO. 1   ILLINOIS   FED. AID PROJECT				