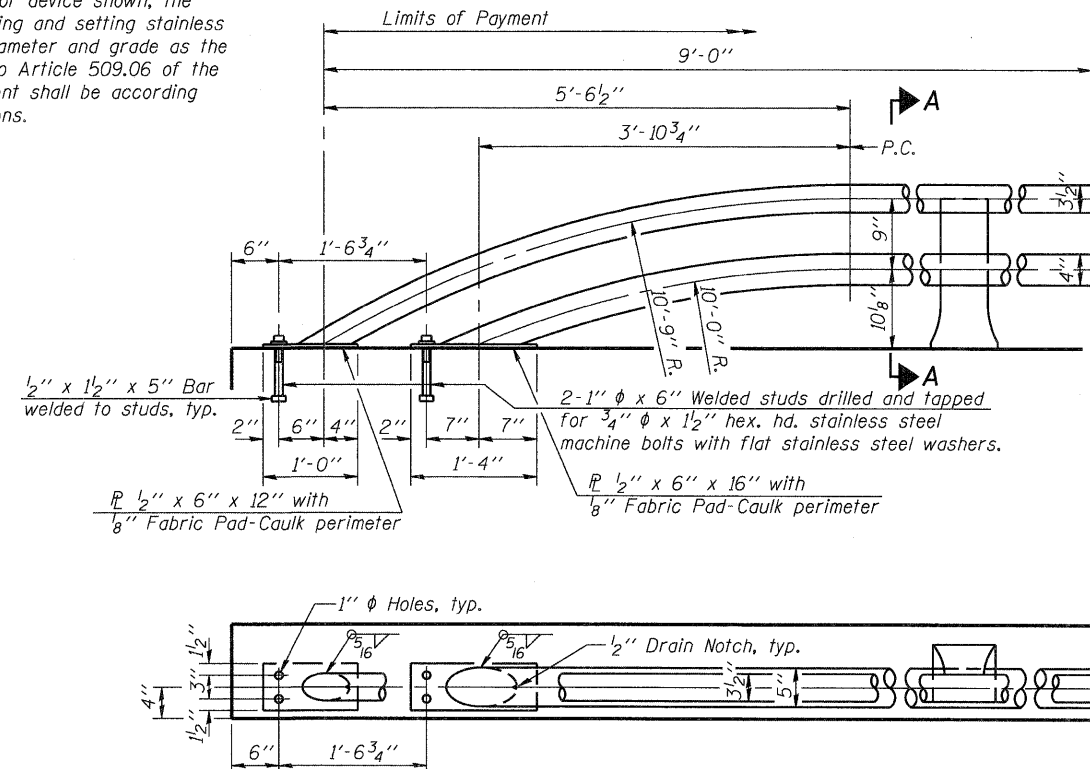
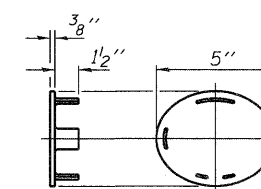


\* In lieu of the cast-in-place anchor device shown, the Contractor has the option of drilling and setting stainless steel anchor rods of the same diameter and grade as the specified cap screws according to Article 509.06 of the Standard Specifications. Embedment shall be according to the manufacturer's specifications.

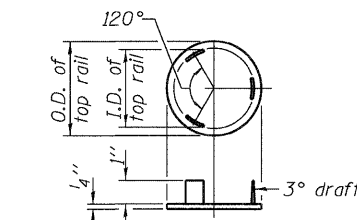


**RAIL TERMINAL SECTION**

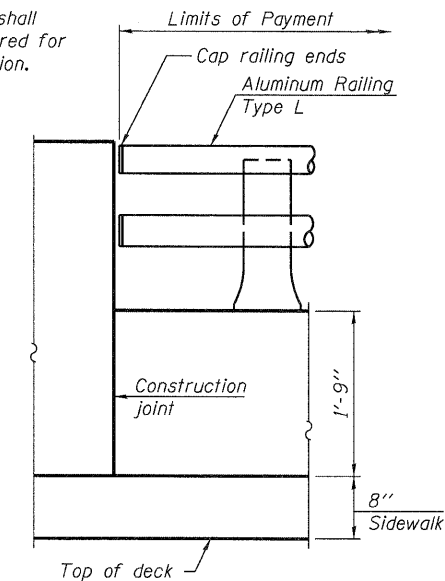
Note:  
The end rail post shall be set back as required for the terminal rail section.



**CAST END CAP**  
For bottom rail  
DRIVE FIT TYPE



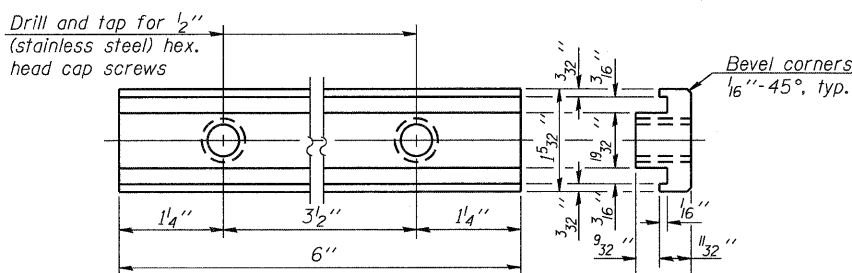
**CAST END CAP**  
For top rail



**RAIL END TREATMENT FOR TYPE 5 AND 6 TERMINAL**

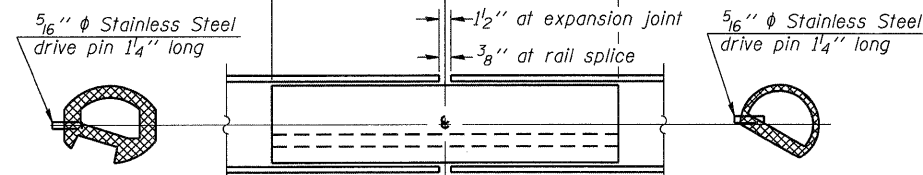
**BILL OF MATERIAL**

Item	Unit	Quantity
Aluminum Railing, Type L	Foot	360

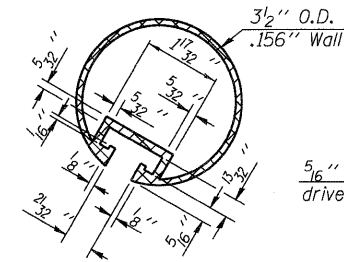


**RAIL POST CLAMP BAR**

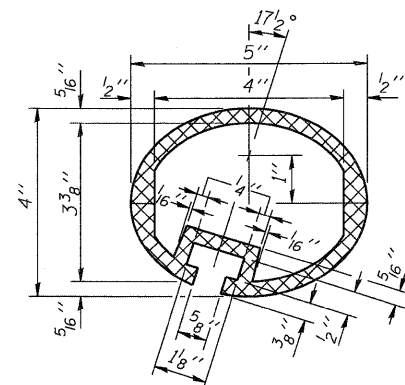
For Top Rail



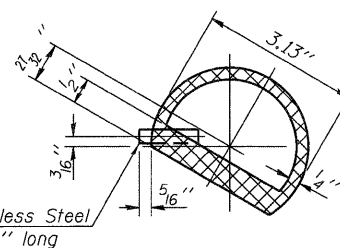
**RAIL SPLICE**



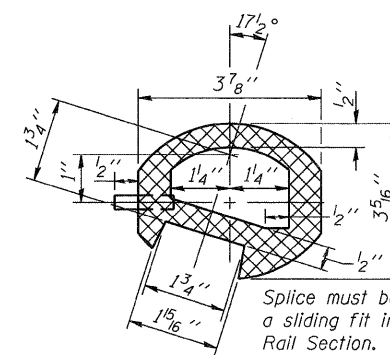
**SECTION THRU TOP RAIL**



**SEC. THRU ELLIPTICAL RAIL SECTION**



**SECTION THRU SPLICE**  
For Top Rail



**SEC. THRU SPLICE**

Notes:  
All Posts shall be normal to parapet.  
All joints in rail shall be spliced per detail.  
All exposed rail ends shall be capped per detail.  
Provide 1-1/8 inch and 2-1/8 inch Aluminum Shims for 25% of the Posts. Rail elements shall be parallel to Grade-high spots will be ground and low spots shimmed.  
See sheets 17 and 20 of 67 for rail post spacing.

FILE NAME = 0458079-62122-62B-Bridge-Rail-Details.dwg	USER NAME = jahnhart	DESIGNED - JDK	REVISED -	<b>STATE OF ILLINOIS DEPARTMENT OF TRANSPORTATION</b>	<b>BRIDGE RAIL DETAILS STRUCTURE NO. 045-0079</b>	SHEET NO. 28 OF 67 SHEETS	F.A.P. RTE. 347	SECTION LY (HB & VB)	COUNTY DUPAGE/KANE	TOTAL SHEETS 421	SHEET NO. 194
PLOT SCALE = 1/8"=1'-0"	PLOT DATE = 3/20/2012	CHECKED - GEK	REVISED -				CONTRACT NO. 60122				
		DRAWN - JDK	REVISED -				ILLINOIS FED. AID PROJECT				
		CHECKED - GEK	REVISED -								