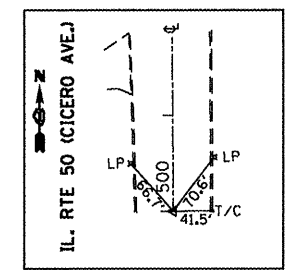


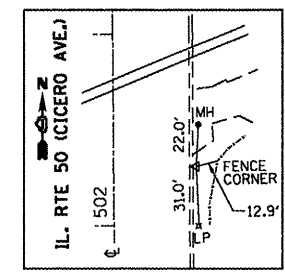
CONTROL POINT #100

FD X-CUT BOLT OF FH
 STA. 500+00.00
 N=1877539.9824
 E=1145030.7238



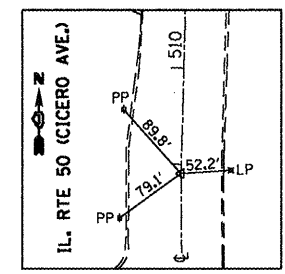
CONTROL POINT #1

X-CUT
 STA. 502+30.59 R
 N=1877771.3525
 E=1145069.2864



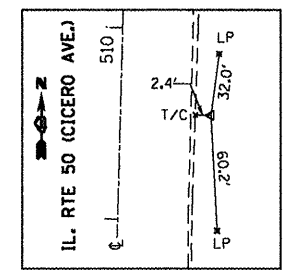
CONTROL POINT #101

SET MAG NAIL
 STA. 508+90.51 R
 N=1878430.3232
 E=1145013.6146



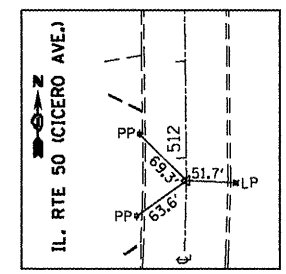
CONTROL POINT #2

SET MAG NAIL
 STA. 509+55.41 R
 N=1878494.4913
 E=1145061.8801



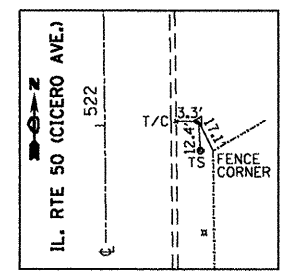
CONTROL POINT #102

SET MAG NAIL
 STA. 511+76.05
 N=1878715.8326
 E=1145018.0056



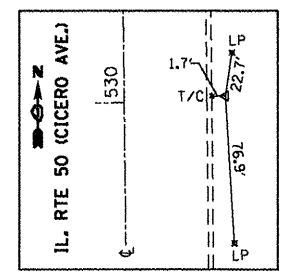
CONTROL POINT #3

SET MAG NAIL
 STA. 522+01.65 R
 N=1879742.2671
 E=1145044.7777



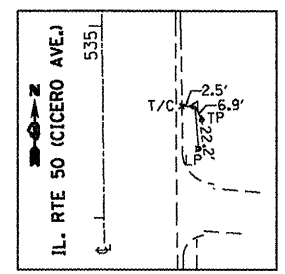
CONTROL POINT #4

SET MAG NAIL
 STA. 530+02.93 R
 N=1880543.3121
 E=1145025.5294



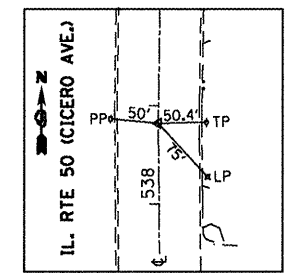
CONTROL POINT #5

SET MAG NAIL
 STA. 534+57.74 R
 N=1880998.0262
 E=1145016.2326



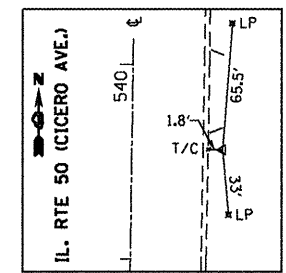
CONTROL POINT #103

SET MAG NAIL
 STA. 538+81.98
 N=1881421.1139
 E=1144958.9094



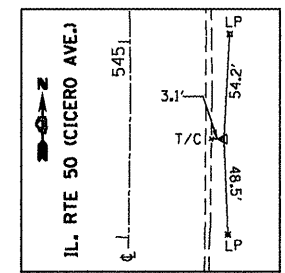
CONTROL POINT #6

SET MAG NAIL
 STA. 539+56.63 R
 N=1881495.6247
 E=1145006.4072



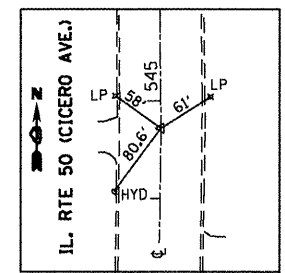
CONTROL POINT #7

FD X-CUT
 STA. 544+50.52 R
 N=1881989.5158
 E=1145009.5896



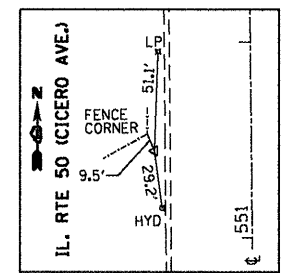
CONTROL POINT #104

SET MAG NAIL
 STA. 544+71.72
 N=1882010.8523
 E=1144960.6561



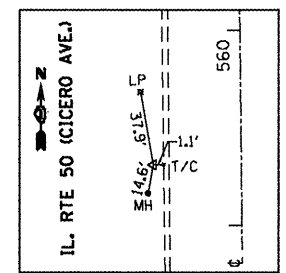
CONTROL POINT #8

SET
 STA. 551+44.43 L
 N=1882682.2863
 E=1144895.1486



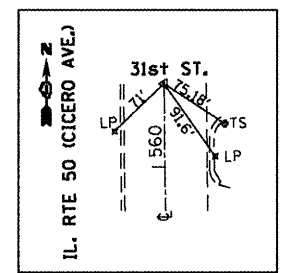
CONTROL POINT #9

SET
 STA. 559+31.19 L
 N=1883468.9573
 E=1144882.4563



CONTROL POINT #105

SET MAG NAIL
 STA. 560+85.28 L
 N=1883624.0246
 E=1144924.9645



BENCHMARK #1

ELEV. 597.61
 X-CUT BOLT OF FH
 STA. 503+93/49' (L)

BENCHMARK #2

ELEV. 596.32
 X-CUT BASE OF LP
 STA. 536+12/49' (L)

BENCHMARK #3

ELEV. 601.79
 X-CUT BASE OF TCB
 STA. 560+40/51' (L)

FILE NAME =	USER NAME = rothenbergmp	DESIGNED -	REVISED -
ca:\pwork\p1dot\rothenbergmp\18156248	FP111189-sht-ATB.dgn	DRAWN -	REVISED -
	PLOT SCALE = 200.0000' / in.	CHECKED -	REVISED -
	PLOT DATE = 2/3/2012	DATE -	REVISED -

**STATE OF ILLINOIS
 DEPARTMENT OF TRANSPORTATION**

**ALIGNMENT, TIES AND BENCHMARKS
 IL. ROUTE 50 (CICERO AVENUE) (34TH STREET TO PERSHING ROAD)**

F.A.P. RTE.	SECTION	COUNTY	TOTAL SHEETS	SHEET NO.
350	2010-050-1	COOK	44	7
CONTRACT NO. 60L26				
ILLINOIS FED. AID PROJECT				