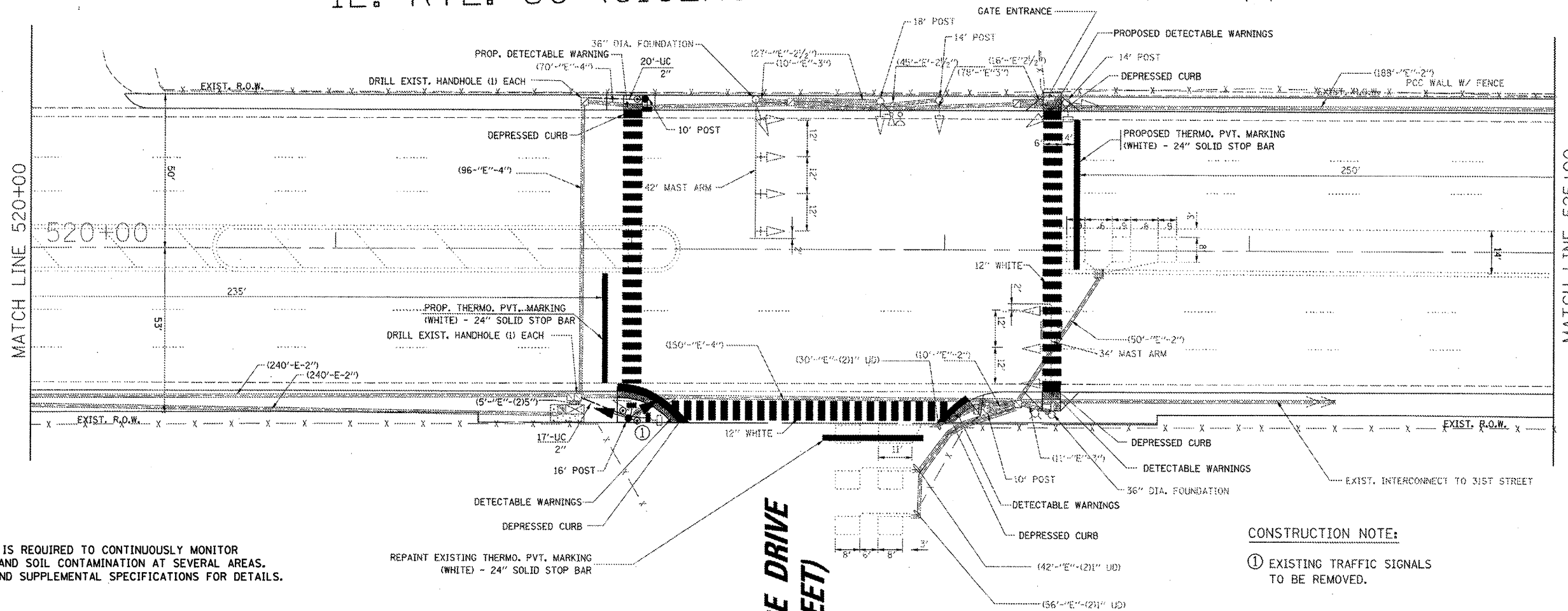


IL. RTE. 50 (CICERO AVENUE)



NOTE:

THE ENVIRONMENTAL FIRM IS REQUIRED TO CONTINUOUSLY MONITOR FOR WORKER PROTECTION AND SOIL CONTAMINATION AT SEVERAL AREAS. SEE SPECIAL PROVISION AND SUPPLEMENTAL SPECIFICATIONS FOR DETAILS.

CONSTRUCTION NOTE:

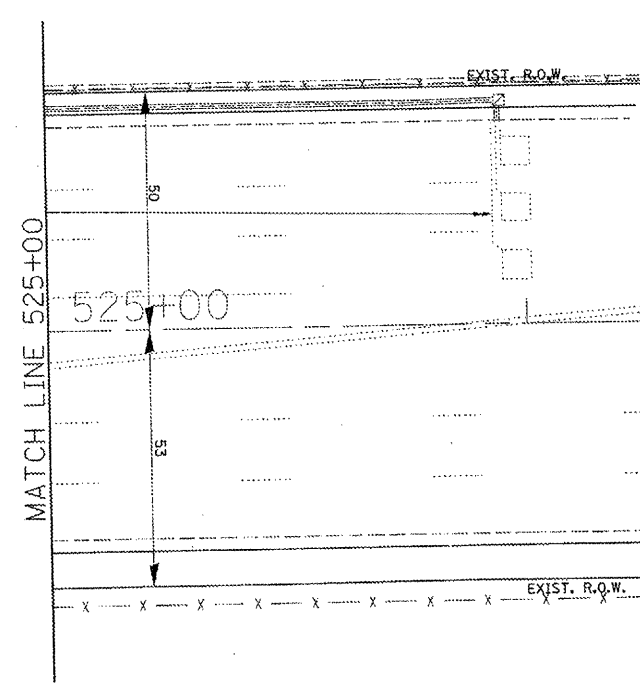
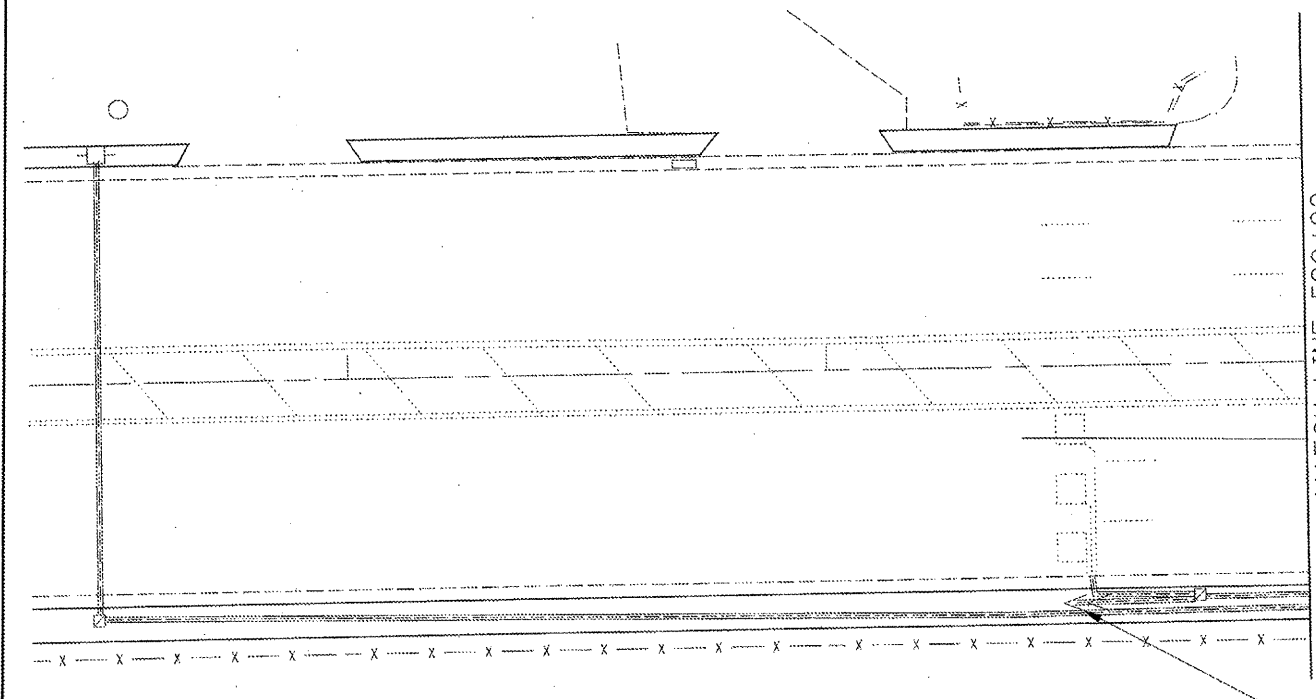
① EXISTING TRAFFIC SIGNALS TO BE REMOVED.

**CITIES SERVICE DRIVE
(37th STREET)**

THE FOLLOWING ITEMS SHALL BE REMOVED BY THE CONTRACTOR AND SHALL BE DISPOSED OF BY THEM OUTSIDE THE RIGHT-OF-WAY AT THEIR EXPENSE. THE SALVAGE VALUE OF THE REMOVED EQUIPMENT SHALL BE REFLECTED IN THE CONTRACT BID PRICE.

- 1 EACH SIGNAL HEAD 2-FACE, 3-SECT., 5-SECT.
- 1 EACH TRAFFIC SIGNAL POST
- 1 EACH PEDESTRIAN SIGNAL HEAD, 1-FACE
- 1 EACH PEDESTRIAN PUSH-BUTTON

EXISTING INTERCONNECT CONDUIT TO PERSHING ROAD (39TH STREET)



FILE NAME #	USER NAME # ngugansm	DESIGNED - SN	REVISED 1-21-2012	STATE OF ILLINOIS DEPARTMENT OF TRANSPORTATION		TRAFFIC SIGNAL MODERNIZATION PLAN IL. ROUTE 50 (CICERO AVE.) AND CITIES SERVICE DRIVE / 37th STREET CICERO, ILLINOIS		F.A.P. RTE. 350	SECTION 2010-050-I	COUNTY COOK	TOTAL SHEETS 44	SHEET NO. 14
CONTRACT NO. 60L26	CONTRACT NO. 60L26	DRAWN - SN/BK	REVISED -					SCALE: \$SCALE\$	SHEET NO. OF SHEETS STA. TO STA.	ILLINOIS FED. AID PROJECT		
PLOT SCALE = 26.80000 / 1" = 100'	CHECKED - SM	DATE - 08/18/2011	REVISED -									
PLOT DATE = 1/31/2012												