

ALIGNMENT DATA

105	N 861030.08 E 19109.05	108	N 861585.69 E 19132.24	111	N 862377.43 E 19118.50
106	N 861239.18 E 19115.88	109	N 861987.31 E 19134.67	112	N 862579.66 E 19113.25
107	N 861428.54 E 19127.11	110	N 862188.79 E 19129.44		

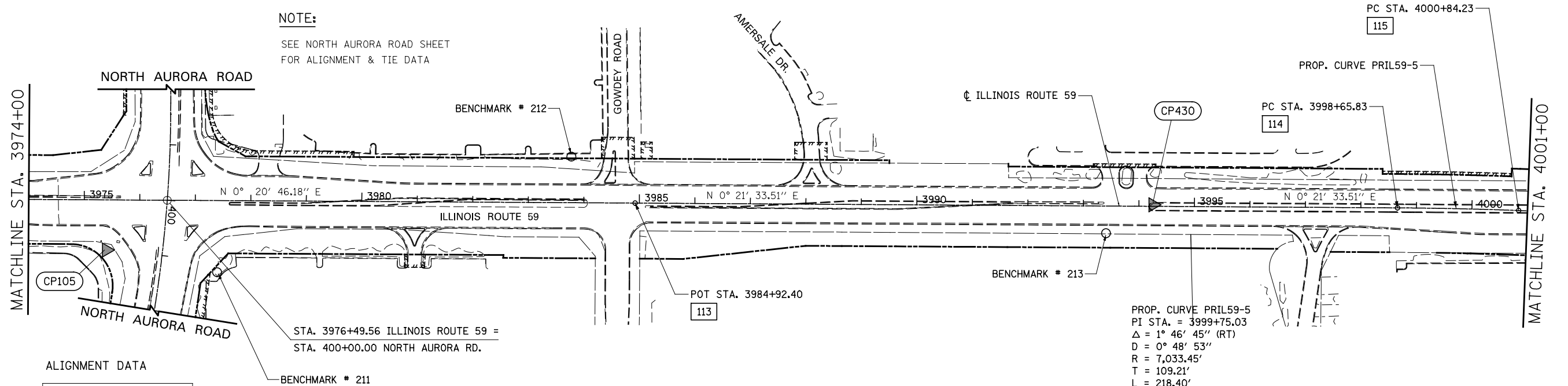
PROP. CURVE PRIL59-1  
PI STA. = 3957+38.84  
Δ = 3° 02' 36" (RT)  
D = 1° 27' 16"  
R = 3,939.05'  
T = 104.64'  
L = 209.23'  
E = 1.39'  
P.C. STA. = 3956+34.20  
P.T. STA. = 3958+43.43

PROP. CURVE PRIL59-2  
PI STA. = 3961+11.77  
Δ = 3° 02' 50" (LT)  
D = 1° 56' 16"  
R = 2,956.67'  
T = 78.64'  
L = 157.25'  
E = 1.05'  
P.C. STA. = 3960+33.13  
P.T. STA. = 3961+90.37

PROP. CURVE PRIL59-3  
PI STA. = 3966+92.83  
Δ = 3° 39' 58" (LT)  
D = 1° 49' 07"  
R = 3,150.48'  
T = 100.83'  
L = 201.59'  
E = 1.61'  
P.C. STA. = 3965+92.00  
P.T. STA. = 3967+93.59

PROP. CURVE PRIL59-4  
PI STA. = 3970+83.74  
Δ = 3° 39' 58" (RT)  
D = 1° 48' 43"  
R = 3,162.19'  
T = 101.20'  
L = 202.33'  
E = 1.62'  
P.C. STA. = 3969+82.54  
P.T. STA. = 3971+84.87

NOTE:  
SEE NORTH AURORA ROAD SHEET  
FOR ALIGNMENT & TIE DATA



ALIGNMENT DATA

113	N 19121.15 E 863887.16
114	N 19129.76 E 865260.56
115	N 19134.52 E 865478.90

PROP. CURVE PRIL59-5  
PI STA. = 3999+75.03  
Δ = 1° 46' 45" (RT)  
D = 0° 48' 53"  
R = 7,033.45'  
T = 109.21'  
L = 218.40'  
E = 0.85'  
P.C. STA. = 3998+65.83  
P.T. STA. = 4000+84.23

