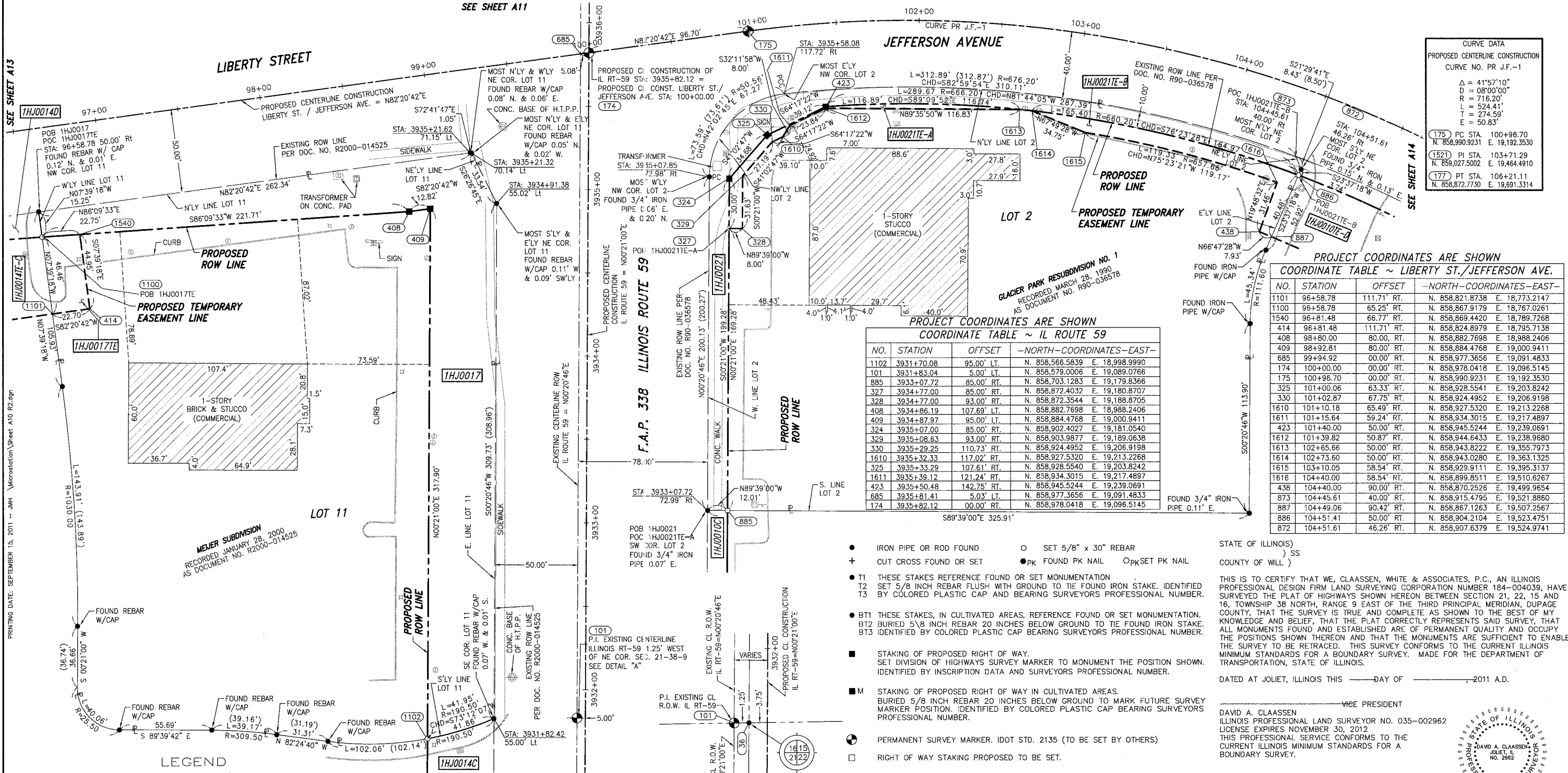


SEE SHEET A11



**CURVE DATA**  
PROPOSED CENTERLINE CONSTRUCTION  
CURVE NO. PR J.F.-1

Δ = 41°57'10"  
D = 08°00'00"  
R = 716.20'  
L = 524.41'  
T = 274.59'  
E = 50.83'

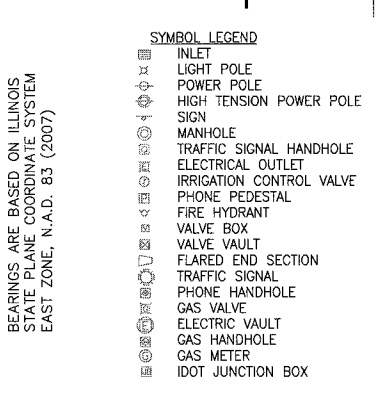
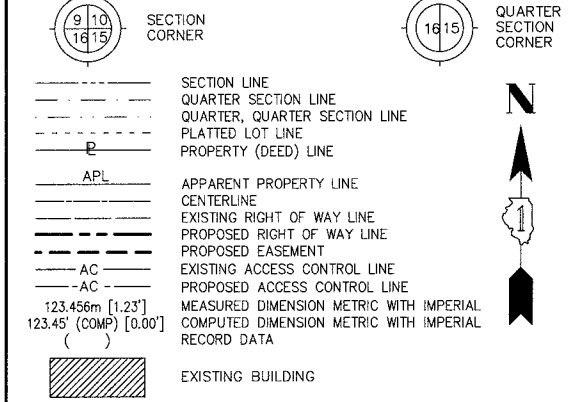
(175) PC STA. 100+96.70  
N. 858,990.9231 E. 19,192.3530  
(152) PI STA. 103+71.29  
N. 859,027.5002 E. 19,464.4910  
(177) PT STA. 106+21.11  
N. 858,872.7730 E. 19,691.3314

**PROJECT COORDINATES ARE SHOWN**  
COORDINATE TABLE ~ LIBERTY ST./JEFFERSON AVE.

NO.	STATION	OFFSET	-NORTH-COORDINATES-EAST-
1101	96+58.78	111.71' RT.	N. 858,821.8738 E. 18,773.2147
1100	96+58.78	65.25' RT.	N. 858,867.9179 E. 18,767.0261
1540	96+81.48	66.77' RT.	N. 858,869.4420 E. 18,789.7268
414	96+81.48	111.71' RT.	N. 858,824.8979 E. 18,795.7138
408	98+80.00	80.00' RT.	N. 858,882.7698 E. 18,988.2406
409	98+92.81	80.00' RT.	N. 858,884.4768 E. 19,000.9411
685	99+94.92	00.00' RT.	N. 858,977.3656 E. 19,091.4833
174	100+00.00	00.00' RT.	N. 858,978.0418 E. 19,096.5145
175	100+96.70	00.00' RT.	N. 858,990.9231 E. 19,192.3530
325	101+00.00	63.33' RT.	N. 858,928.5541 E. 19,203.8242
330	101+02.87	67.75' RT.	N. 858,924.4952 E. 19,206.9198
1610	101+10.18	65.49' RT.	N. 858,927.5320 E. 19,213.2268
1611	101+15.64	59.24' RT.	N. 858,934.3015 E. 19,217.4897
423	101+40.00	50.00' RT.	N. 858,945.5244 E. 19,239.0691
1612	101+39.82	50.87' RT.	N. 858,944.6433 E. 19,238.9680
1613	102+65.66	50.00' RT.	N. 858,943.8222 E. 19,355.7973
1614	102+73.60	50.00' RT.	N. 858,943.0280 E. 19,363.1325
1615	103+10.05	58.54' RT.	N. 858,929.9111 E. 19,395.3137
1616	104+40.00	58.54' RT.	N. 858,899.8511 E. 19,510.6267
438	104+40.00	90.00' RT.	N. 858,870.2526 E. 19,499.9654
873	104+45.61	40.00' RT.	N. 858,915.4795 E. 19,521.8860
887	104+49.06	90.42' RT.	N. 858,867.1263 E. 19,507.2567
886	104+51.41	50.00' RT.	N. 858,904.2104 E. 19,523.4751
872	104+51.61	46.26' RT.	N. 858,907.6379 E. 19,524.9741

**PROJECT COORDINATES ARE SHOWN**  
COORDINATE TABLE ~ IL ROUTE 59

NO.	STATION	OFFSET	-NORTH-COORDINATES-EAST-
1102	3931+70.08	95.00' LT.	N. 858,566.5839 E. 18,998.9990
101	3931+83.04	5.00' LT.	N. 858,579.0006 E. 19,089.0766
885	3933-07.72	85.00' RT.	N. 858,703.1283 E. 19,179.8366
327	3934-77.00	85.00' RT.	N. 858,872.4032 E. 19,180.8707
328	3934-77.00	93.00' RT.	N. 858,872.3544 E. 19,188.8705
408	3934+86.19	107.69' RT.	N. 858,882.7698 E. 18,988.2406
409	3934+87.97	95.00' LT.	N. 858,884.4768 E. 19,000.9411
324	3935+07.00	85.00' RT.	N. 858,902.4027 E. 19,181.0540
329	3935+08.63	93.00' RT.	N. 858,903.9877 E. 19,189.0638
330	3935+29.25	110.73' RT.	N. 858,924.4952 E. 19,206.9198
1610	3935+32.33	117.02' RT.	N. 858,927.5320 E. 19,213.2268
325	3935+33.29	107.61' RT.	N. 858,928.5540 E. 19,203.8242
1611	3935+39.12	121.24' RT.	N. 858,934.3015 E. 19,217.4897
423	3935+50.48	142.75' RT.	N. 858,945.5244 E. 19,239.0691
685	3935+81.41	5.03' LT.	N. 858,977.3656 E. 19,091.4833
174	3935+82.12	00.00' RT.	N. 858,978.0418 E. 19,096.5145



- IRON PIPE OR ROD FOUND
- SET 5/8" x 30" REBAR
- + CUT CROSS FOUND OR SET
- PK FOUND PK NAIL
- PK SET PK NAIL
- T1 THESE STAKES REFERENCE FOUND OR SET MONUMENTATION
- T2 SET 5/8 INCH REBAR FLUSH WITH GROUND TO THE FOUND IRON STAKE. IDENTIFIED BY COLORED PLASTIC CAP AND BEARING SURVEYORS PROFESSIONAL NUMBER.
- BT1 THESE STAKES, IN CULTIVATED AREAS, REFERENCE FOUND OR SET MONUMENTATION.
- BT2 BURIED 5/8 INCH REBAR 20 INCHES BELOW GROUND TO THE FOUND IRON STAKE.
- BT3 IDENTIFIED BY COLORED PLASTIC CAP BEARING SURVEYORS PROFESSIONAL NUMBER.
- STAKING OF PROPOSED RIGHT OF WAY. SET DIVISION OF HIGHWAYS SURVEY MARKER TO MONUMENT THE POSITION SHOWN. IDENTIFIED BY INSCRIPTION DATA AND SURVEYORS PROFESSIONAL NUMBER.
- M STAKING OF PROPOSED RIGHT OF WAY IN CULTIVATED AREAS. BURIED 5/8 INCH REBAR 20 INCHES BELOW GROUND TO MARK FUTURE SURVEY MARKER POSITION. IDENTIFIED BY COLORED PLASTIC CAP BEARING SURVEYORS PROFESSIONAL NUMBER.
- ⊙ PERMANENT SURVEY MARKER. IDOT STD. 2135 (TO BE SET BY OTHERS)
- RIGHT OF WAY STAKING PROPOSED TO BE SET.

**NOTES:**

- 1) ALL COORDINATES SHOWN HEREON ARE PROJECT. ALL DISTANCES SHOWN HEREON ARE GROUND.
- 2) BEARINGS SHOWN HEREON ARE BASED ON ILLINOIS STATE PLANE COORDINATE SYSTEM EAST ZONE, NAD 83, (2007).
- 3) THE COMBINATION FACTOR USED FOR THIS PROJECT = 0.99994777.

PARC'L NUMBER	OWNER	TOTAL HOLDING ACRES	PART TAKEN ACRES	REMAINDER ACRES	PREV. DED. ACRES	EASEMENT ACRES	EASEMENT PURPOSE	PERMANENT TAX INDEX NUMBER	PROPERTY ACQUIRED BY
1HJ0017	WONDORA, LLC, A NEW JERSEY LIMITED LIABILITY COMPANY	1.970	0.437	1.533		0.024	CONSTRUCTION	07-16-401-009	
1HJ0021	PORTELLO'S HOT DOGS, INC., A DELAWARE CORPORATION	1.872	0.157	1.715		0.017	CONSTRUCTION	07-15-305-001	
1HJ0021E-A						0.036	CONSTRUCTION		
1HJ0021E-B									