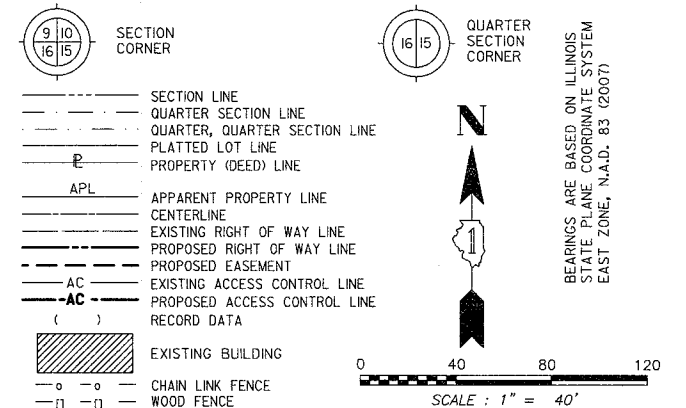
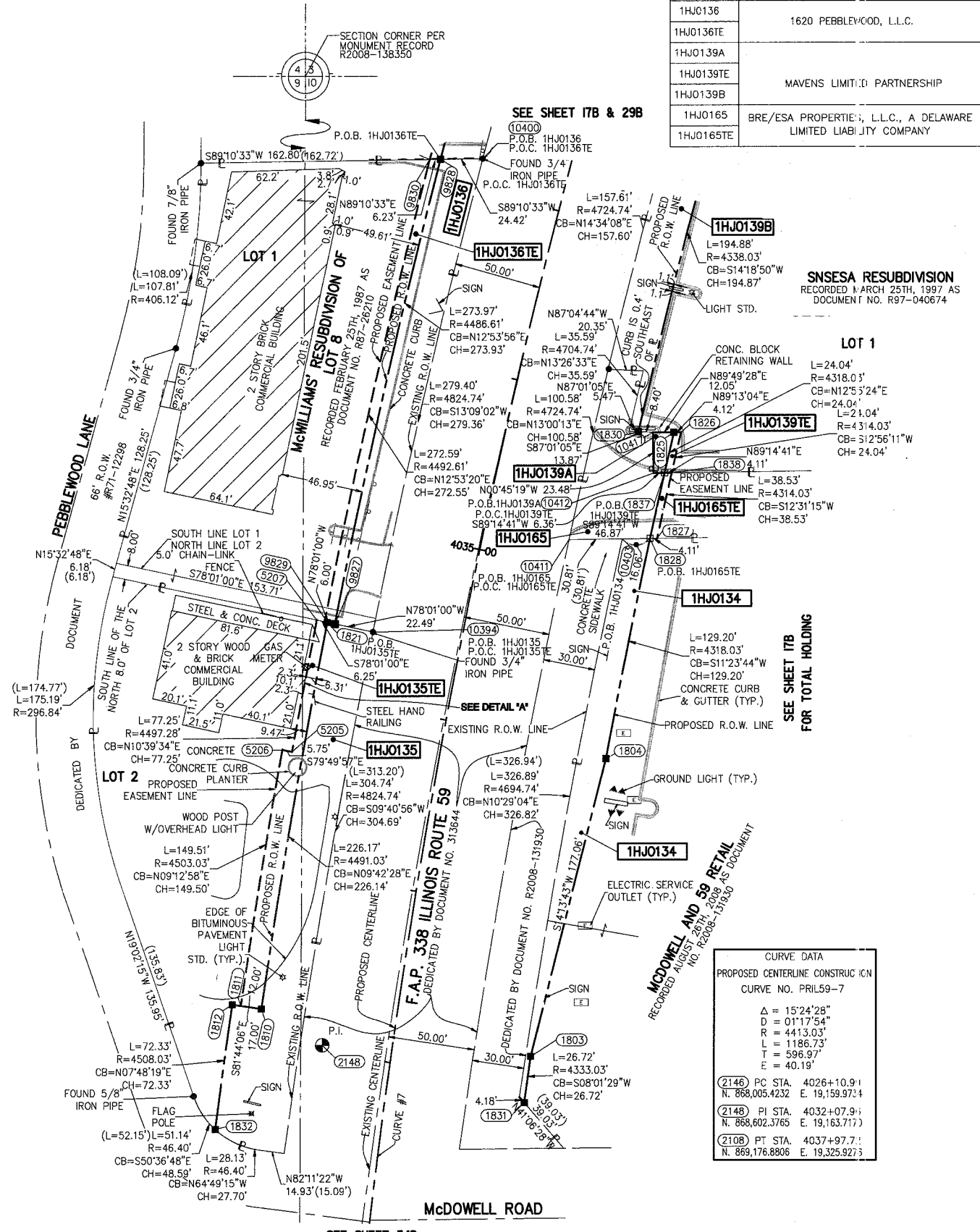


PART OF THE NE 1/4 SECTION 9 & NW 1/4 SECTION 10, T38N, R9E OF THE 3rd PM, NAPERVILLE TOWNSHIP, DUPAGE COUNTY, ILLINOIS.

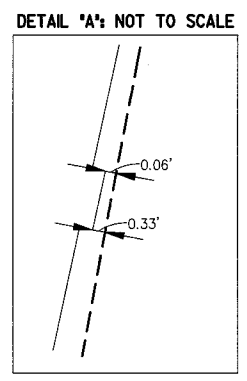
LEGEND



PARCEL NUMBER	OWNER	TOTAL HOLDING ACRES	PART TAKEN ACRES	REMAINDER ACRES	PREV. DED. ACRES	EASEMENT ACRES	EASEMENT PURPOSE	PERMANENT TAX INDEX NUMBER	PROPERTY ACQUIRED BY
1HJ0134	PEBBLEWOOD ASSOC. LLC, AN ILLINOIS LIMITED LIABILITY COMPANY	3.261	0.090	3.171				07-10-105-011 07-10-105-012	
1HJ0135	LASALLE BANK NATIONAL ASSOCIATION (OR ITS SUCCESSOR) AS SUCCESSOR TO GARY-WHEATON BANK AS TRUSTEE UNDER TRUST AGREEMENT DATED MARCH 13, 1987 KNOWN AS TRUST NO. 7609	0.814	0.210	0.604				07-09-202-003	
1HJ0135TE						0.052	CONSTRUCTION		
1HJ0136			0.147						
1HJ0136TE	1620 PEBBLEWOOD, L.L.C.	0.898		0.751		0.038	CONSTRUCTION	07-09-202-002	
1HJ0139A			A=0.005 (215 SQ.FT)						
1HJ0139TE		1.061		0.960		0.002 (96 SQ.FT)	DRIVEWAY RECONSTRUCTION	07-10-105-009	
1HJ0139B	MAVENS LIMITED PARTNERSHIP								
1HJ0165	BRE/ESA PROPERTIES, L.L.C., A DELAWARE LIMITED LIABILITY COMPANY	3.349	0.078	3.271		0.004 (154 SQ.FT)	DRIVEWAY RECONSTRUCTION	07-10-105-010	
1HJ0165TE									



NO.	STATION	OFFSET	NORTH	EAST
1832	4031+49.11	95.00 LT	868554.1316	19101.8858
1812	4032+19.91	95.00 LT	868625.7900	19111.7086
1811	4032+19.91	90.00 LT	868625.0712	19118.6567
1810	4032+19.91	78.00 LT	868623.3462	19128.5321
5206	4033+66.43	90.00 LT	868772.6426	19140.8009
5205	4033+66.43	84.25 LT	868771.6276	19146.2606
1804	4033+95.00	95.00 RT	868767.4854	19327.7195
10394	4034+41.76	51.09 LT	868840.6623	19192.9932
9827	4034+42.09	73.58 LT	868845.3327	19170.9890
9829	4034+42.17	79.58 LT	868846.5786	19165.1191
1821	4034+42.15	78.00 LT	868846.2505	19166.6649
5207	4034+42.24	84.25 LT	868847.5483	19160.5504
10411	4035+16.38	49.32 RT	868893.5188	19306.3820
10403	4035+23.69	79.36 RT	868893.9250	19337.1924
1828	4035+27.05	95.00 RT	868894.1367	19353.2466
1827	4035+27.99	99.00 RT	868894.1908	19357.3516
10412	4035+64.90	88.81 RT	868931.6661	19355.2290
1837	4035+66.42	95.00 RT	868931.7500	19361.5909
1838	4035+67.41	99.00 RT	868931.8042	19365.7047
1830	4035+86.68	75.00 RT	868955.5811	19346.5296
10417	4035+88.17	83.27 RT	868955.1441	19354.9194
1829	4035+88.49	85.00 RT	868955.0528	19356.6719
1825	4035+90.99	95.00 RT	868955.1810	19366.9674
1826	4035+92.00	99.00 RT	868955.2372	19371.0872
1831	4031+87.79	80.00 RT	868569.4061	19280.4709
1803	4032+15.00	80.00 RT	868595.8619	19284.2007
1824	4037+07.11	90.00 LT	869112.1011	19215.1049
9830	4037+09.93	79.58 LT	869112.2566	19225.9136
1823	4037+10.90	76.00 LT	869112.3100	19229.6269
9828	4037+11.56	73.58 LT	869112.3461	19256.5507
10400	4037+18.00	50.05 LT	869112.6973	19256.5507



CURVE DATA	
PROPOSED CENTERLINE CONSTRUCTION	
CURVE NO. PRIL59-7	
Δ = 15°24'28"	
D = 0117'54"	
F = 4413.03'	
T = 1186.73'	
T = 596.97'	
E = 40.19'	
(2146) PC STA. 4026+10.91	N. 868,005.4232 E. 19,159.9734
(2148) PI STA. 4032+07.91	N. 868,602.3765 E. 19,163.7171
(2108) PT STA. 4037+97.71	N. 869,176.8806 E. 19,325.9273

NAD83 (2007) S.P.	N. 1,869,327.5048
	E. 1,023,602.1293
PROJECT (GROUND)	N. 869,425.1449
	E. 23,655.5948

- NOTES:
- ALL COORDINATES SHOWN HEREON ARE PROJECT. ALL DISTANCES SHOWN HEREON ARE GROUND.
 - BEARINGS SHOWN HEREON ARE BASED ON ILLINOIS STATE PLANE COORDINATE SYSTEM EAST ZONE, NAD 83, (2007).
 - THE COMBINATION FACTOR USED FOR THIS PROJECT = 0.99994777.
 - COORDINATE CONVERSION
- NAD83 (2007) STATE PLANE COORDINATES TO PROJECT COORDINATES:
 A) DIVIDE THE STATE PLANE NAD83 GRID COORDINATES BY THE COMBINATION FACTOR.
 B) SUBTRACT 1,000,000.00 FROM THESE NORTHINGS AND EASTINGS.
- PROJECT COORDINATES TO NAD83 (2007) STATE PLANE COORDINATES:
 A) ADD 1,000,000.00 TO THE PROJECT NORTHINGS AND EASTINGS.
 B) MULTIPLY THESE COORDINATES BY THE COMBINATION FACTOR.
- 5) THE NGS MONUMENT HELD FOR THIS PROJECT IS FIRST ORDER P.I.D. AA3730.

RECEIVED
JUL 28 2011
PLATS & LEGALS

PLAT OF HIGHWAYS
STATE OF ILLINOIS
DEPARTMENT OF TRANSPORTATION
F.A.P. 338 ILLINOIS ROUTE 59
SECTION FERRY RD. TO AURORA AVE. DUPAGE COUNTY
PROJECT: ROUTE 59 JOB NO. R-91-035-09
STATION 4031+50 TO STATION 4037+00
SCALE: 1" = 40' SHEET 33B OF 47

BUREAU OF LAND ACQUISITION
201 WEST CENTER COURT
SCHAUMBURG, ILLINOIS 60196-1096