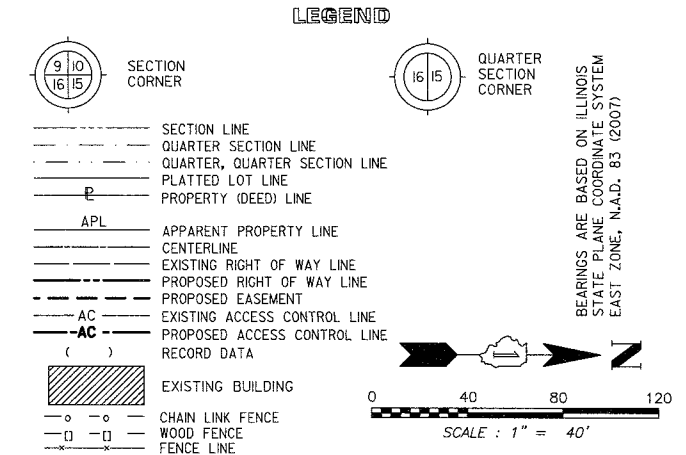


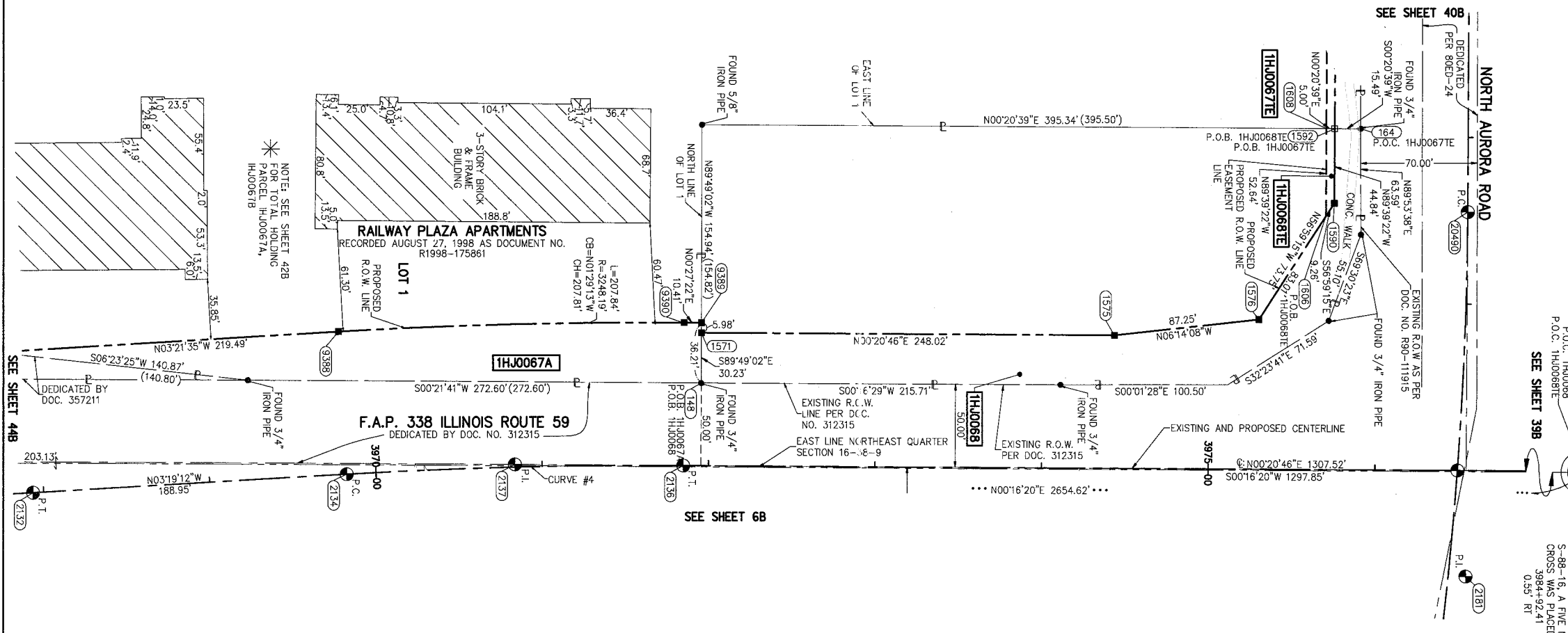
PART OF THE NE 1/4 SECTION 16, T38N, R9E OF THE 3rd PM, NAPERVILLE TOWNSHIP, DUPAGE COUNTY, ILLINOIS.

PARCEL NUMBER	OWNER	TOTAL HOLDING ACRES	PART TAKEN ACRES	REMAINDER ACRES	PREV. DED. ACRES	EASEMENT ACRES	EASEMENT PURPOSE	PERMANENT TAX INDEX NUMBER	PROPERTY ACQUIRED BY
1HJ0067A	CLPF RAILWAY PLAZA L.P., A DELAWARE LIMITED PARTNERSHIP	20.816	A=0.251	20.176				07-16-201-022	
1HJ0067B			B=0.389						
1HJ0067E									
1HJ0068	MERCHANTS NATIONAL BANK OF AURORA (OR ITS SUCCESSOR) AS TRUSTEE UNDER TRUST AGREEMENT DATED JULY 29, 1971 KNOWN AS TRUST NO. 1856	2.190	0.317	1.873		0.006 (244 SQ FT)	GRADING	07-16-201-007	
1HJ0068TE									

NO.	STATION	OFFSET	NORTH	EAST
164	97+95.16	64.51 LT	862986.3043	18910.9760
1608	97+95.16	85.00 RT	862965.8137	18910.8529
1592	97+95.16	80.00 RT	862970.8137	18910.8829
1590	98+40.00	80.00 RT	862970.5445	18955.7268
1606	98+47.91	85.00 RT	862965.4978	18963.4943
9387	3967+62.20	85.70 LT	862153.3349	19045.5044
9388	3969+82.54	86.00 LT	862372.4441	19032.6410
9390	3971+84.88	86.00 LT	862580.1814	19027.2488
9389	3971+95.29	85.98 LT	862590.5954	19027.3317
1571	3971+95.31	80.00 LT	862590.5763	19033.3117
148	3971+95.40	49.77 LT	862590.4799	19063.5369
1575	3974+43.33	80.00 LT	862838.5905	19034.8102
1576	3975+30.00	90.00 LT	862925.3193	19025.3340



CURVE DATA	CURVE DATA
PROPOSED CENTERLINE CONSTRUCTION CURVE NO. PR159-4	PROPOSED CENTERLINE CONSTRUCTION CURVE NO. PR N.A.-1
Δ = 03°39'58"	Δ = 10°53'54"
D = 01'48'43"	D = 02'29'59"
R = 3162.19'	R = 2292.00'
L = 202.34'	L = 435.96'
T = 101.20'	T = 218.64'
E = 1.62'	E = 10.41'
(2134) PC STA. 3969+82.54 N. 862,337.4267 E. 19,118.4966	(2049) PC STA. 98+44.84 N. 863,050.5140 E. 18,961.0511
(2137) PI STA. 3970+83.74 N. 862,478.4588 E. 19,112.6358	(2181) PI STA. 100+63.48 N. 863,049.2018 E. 19,179.6889
(2136) PT STA. 3971+84.88 N. 862,579.6588 E. 19,113.2472	(2049) PT STA. 102+80.81 N. 863,006.5761 E. 19,394.1353



STATE OF ILLINOIS)
COUNTY OF DUPAGE)

THIS IS TO CERTIFY THAT WE, MIDWEST TECHNICAL CONSULTANTS, INC., AN ILLINOIS PROFESSIONAL DESIGN FIRM NUMBER 184-002917, HAVE SURVEYED THE PLAT OF HIGHWAYS SHOWN HEREON BETWEEN SECTION 15, TOWNSHIP 38 NORTH, RANGE 9 EAST, AND SECTION 16, TOWNSHIP 38 NORTH, RANGE 9 EAST OF THE THIRD PRINCIPAL MERIDIAN, DUPAGE COUNTY, THAT THE SURVEY IS TRUE AND COMPLETE AS SHOWN TO THE BEST OF MY KNOWLEDGE AND BELIEF, THAT THE PLAT CORRECTLY REPRESENTS SAID SURVEY, THAT ALL MONUMENTS FOUND AND ESTABLISHED ARE OF PERMANENT QUALITY AND OCCUPY THE POSITIONS SHOWN THEREON AND THAT THE MONUMENTS ARE SUFFICIENT TO ENABLE THE SURVEY TO BE RETRACED. THIS SURVEY CONFORMS TO THE CURRENT ILLINOIS MINIMUM STANDARDS FOR A BOUNDARY SURVEY. MADE FOR THE DEPARTMENT OF TRANSPORTATION, STATE OF ILLINOIS.

DATED AT NAPERVILLE, ILLINOIS THIS _____ DAY OF _____, 2011 A.D.

RUSSELL W. OLSEN
ILLINOIS PROFESSIONAL LAND SURVEYOR NO. 035-002718
LICENSE EXPIRES NOVEMBER 30, 2012
THIS PROFESSIONAL SERVICE CONFORMS TO THE CURRENT ILLINOIS MINIMUM STANDARDS FOR A BOUNDARY SURVEY.

Midwest Technical Consultants, Inc.
1805 N. MILL STREET, SUITE L
Naperville, ILLINOIS 60563
(630)505-0101

- NOTES:
- 1) ALL COORDINATES SHOWN HEREON ARE PROJECT. ALL DISTANCES SHOWN HEREON ARE GROUND.
 - 2) BEARINGS SHOWN HEREON ARE BASED ON ILLINOIS STATE PLANE COORDINATE SYSTEM EAST ZONE, NAD 83, (2007).
 - 3) THE COMBINATION FACTOR USED FOR THIS PROJECT = 0.99994777.
 - 4) COORDINATE CONVERSION
- NAD83 (2007) STATE PLANE COORDINATES TO PROJECT COORDINATES:
- A) DIVIDE THE STATE PLANE NAD83 GRID COORDINATES BY THE COMBINATION FACTOR.
 - B) SUBTRACT 1,000,000.00 FROM THESE NORTHINGS AND EASTINGS.
- PROJECT COORDINATES TO NAD83 (2007) STATE PLANE COORDINATES:
- A) ADD 1,000,000.00 TO THE PROJECT NORTHINGS AND EASTINGS.
 - B) MULTIPLY THESE COORDINATES BY THE COMBINATION FACTOR.
- 5) THE NGS MONUMENT HELD FOR THIS PROJECT IS IN FIRST ORDER P.I.D. AA3730.

RECEIVED
JUL 20 2011
PLATS & LEGALS

**PLAT OF HIGHWAYS
STATE OF ILLINOIS
DEPARTMENT OF TRANSPORTATION
F.A.P. 338 ILLINOIS ROUTE 59**

SECTION FERRY RD. TO AURORA AVE. DUPAGE COUNTY
PROJECT: ROUTE 59 JOB NO. R-91-035-09
STATION 3968+50 TO STATION 3976+50

SCALE: 1" = 40' SHEET 43B OF 47

BUREAU OF LAND ACQUISITION
201 WEST CENTER COURT
SCHAUMBURG, ILLINOIS 60196-1096

NAD83 (2007) S.P.
N. 1,869,327.5048
E. 1,023,602.1293
PROJECT (GROUND)
N. 869,425.1449
E. 23,655.5948

FOUND MONUMENT AT SECTION CORNER. SECTION CORNER MONUMENT RECORD SET BY US PLUMBLING & SURVEYING, INC. 055' RT