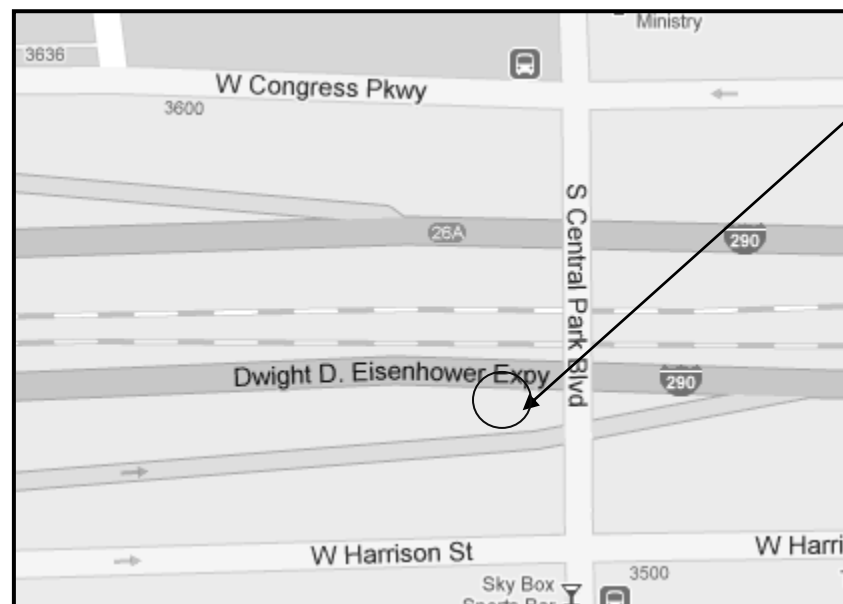


<b>ROUTE</b>	<b>SECTION</b>	<b>COUNTY</b>	<b>TOTAL SHEETS</b>	<b>SHEET NUMBER</b>
VARIOUS	2011-059-I	VARIOUS	44	11

Contract 60P77

R 13 E

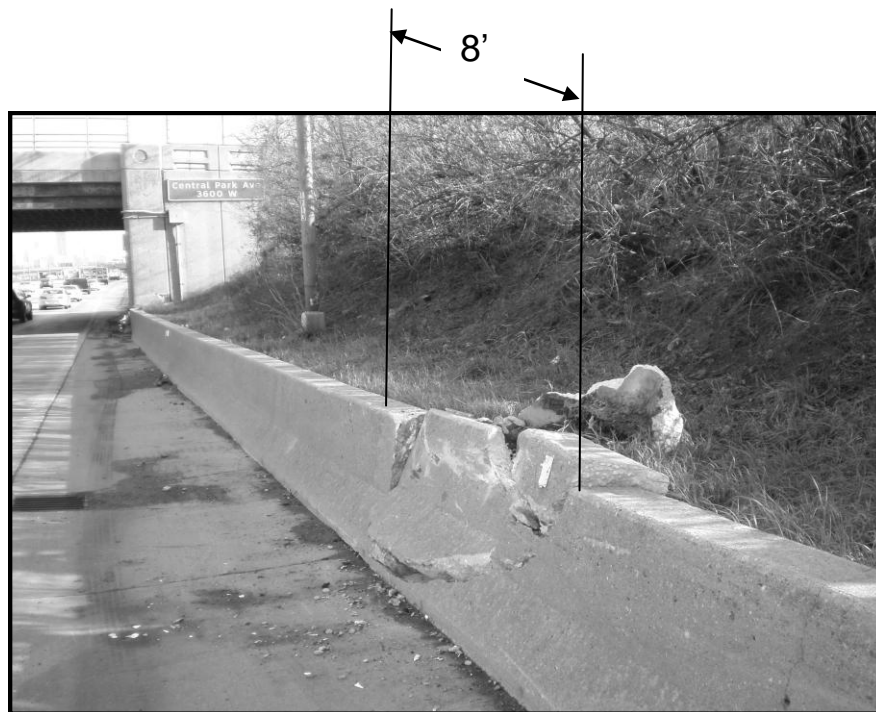
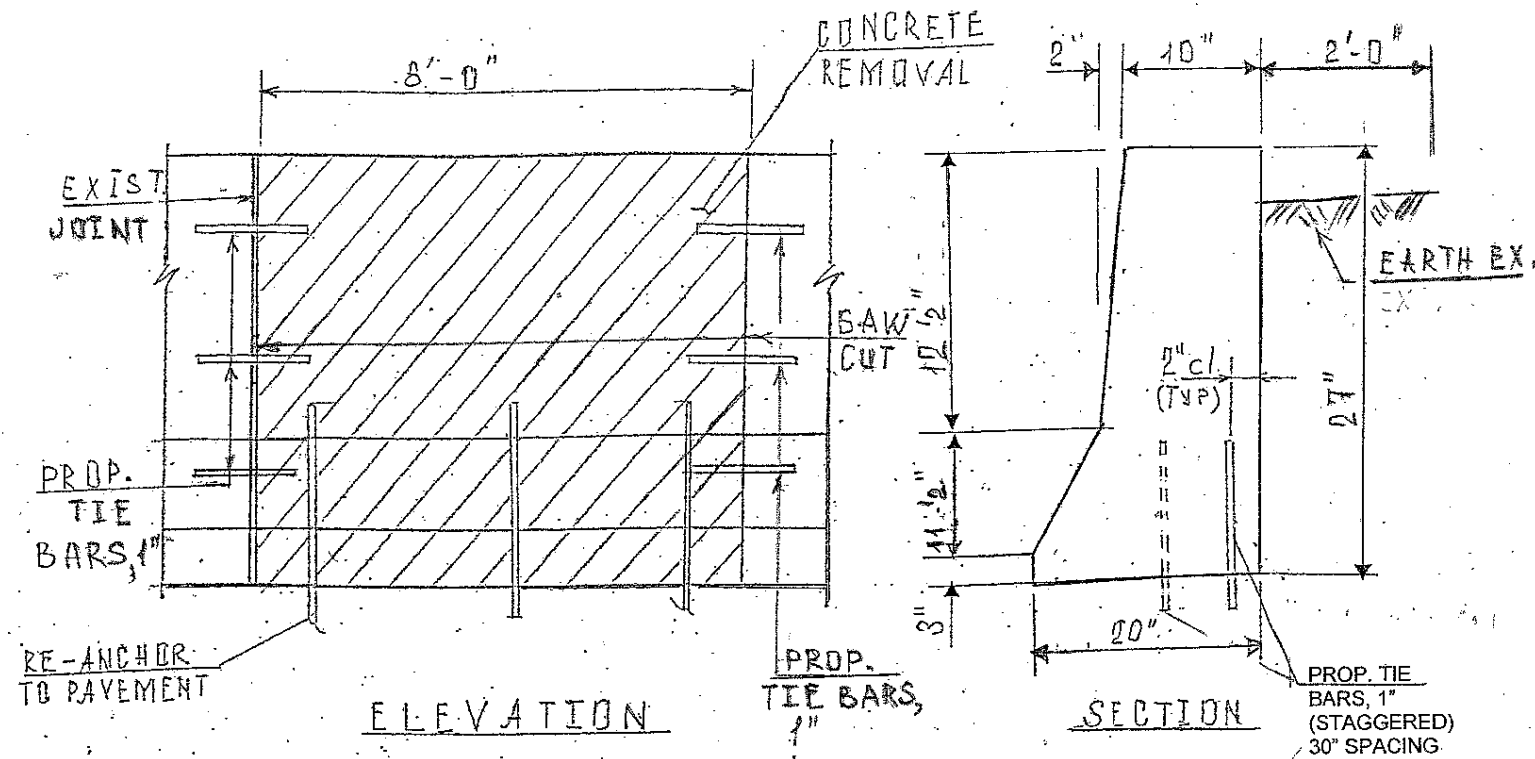


**LOCATION 1: I-290 (EISENHOWER EXPY) EB**  
AT THE CENTRAL PARK AVE, RIGHT SIDE

T 39 N



**CITY OF CHICAGO**  
**WEST CHICAGO TOWNSHIP**  
**COOK COUNTY**



**FULL DEPTH REPAIR**  
**REPLACE 8 FT OF BARRIER WALL**  
**FOR MORE DETAILS SEE SHEET # 8**

**BILL OF MATERIALS**

ITEM	UNIT	QUANTITY
CONCRETE REMOVAL	CU YD	0.8
CONCRETE STRUCTURE	CU YD	0.8
TIE BARS	EACH	10
SAW CUTS	FOOT	4.5
EARTH EXCAVATION	CU YD	1.5
TEMPORARY EROSION CONTROL BLANKET	SQ YD	2.0
TOPSOIL FURNISH AND PLACE, 4"	SQ YD	2.0
SEEDING CLASS 2A	ACRE	0.0004
PROTECTIVE COAT	SQ YD	3.0

**TRAFFIC DATA:**

I-290: SPEED LIMIT = 55 MPH  
2009 ADT = 207800

**ILLINOIS DEPARTMENT OF TRANSPORTATION**  
**LOCATION: 1**  
**I-290 (EISENHOWER EXPY)**