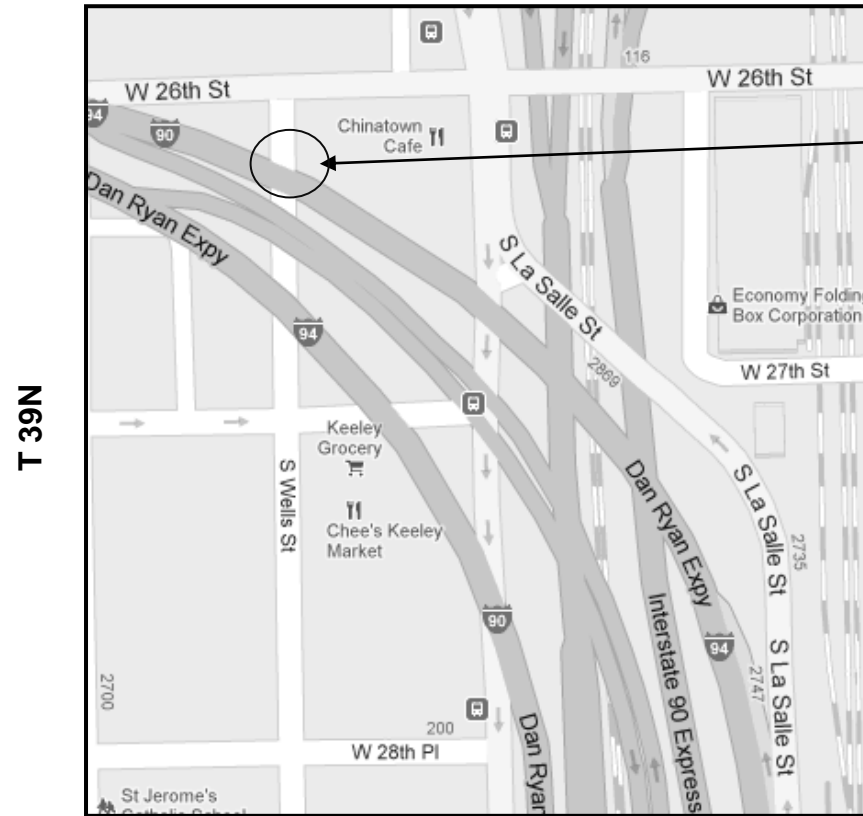


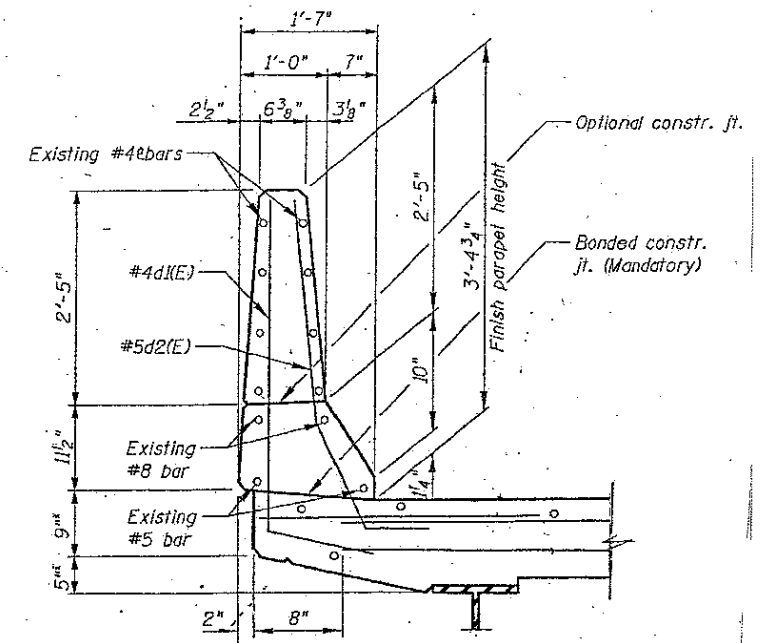
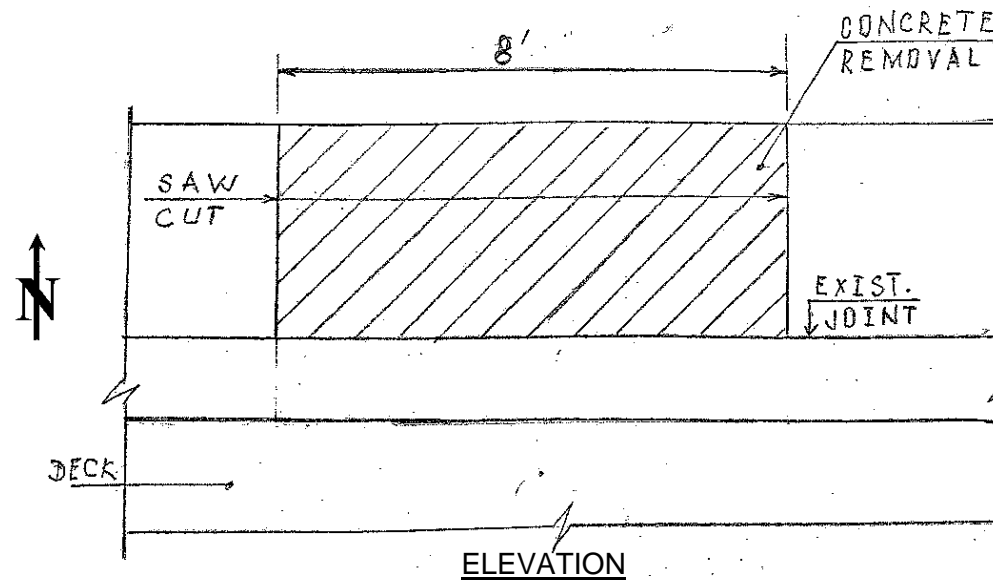
<b>ROUTE</b>	<b>SECTION</b>	<b>COUNTY</b>	<b>TOTAL SHEETS</b>	<b>SHEET NUMBER</b>
VARIOUS	2011-059-I	VARIOUS	44	16

Contract 60P77

**LOCATION 6: I-90/94 (DAN RYAN EXPY) WB  
OVER WELLS TO 29<sup>th</sup> PLACE. SN 016-1118**



**CITY OF CHICAGO  
SOUTH CHICAGO TOWNSHIP  
COOK COUNTY**

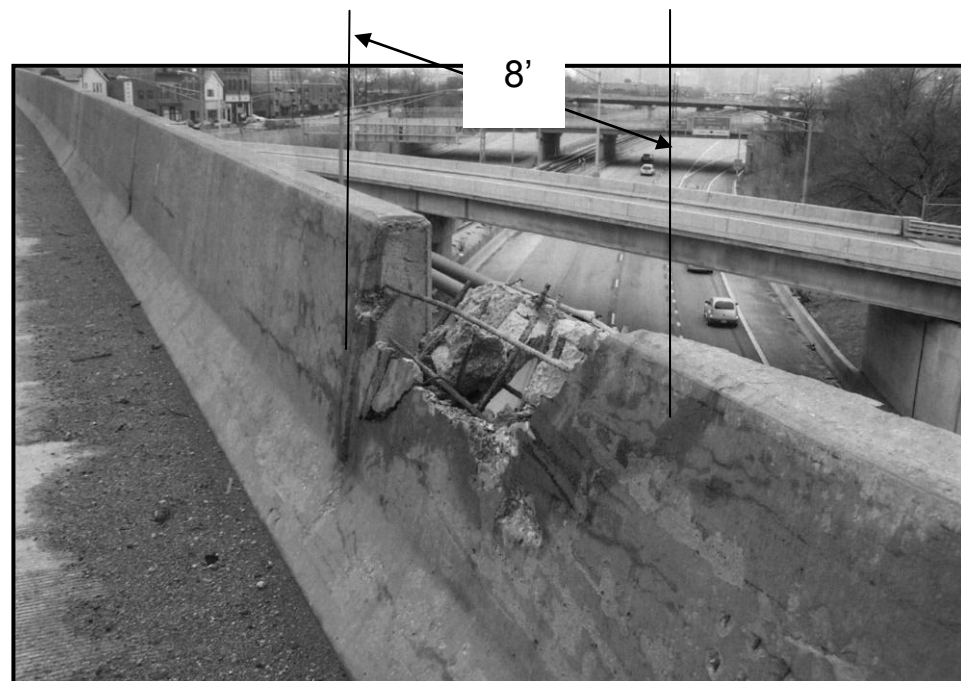


**SECTION THRU PARAPET**

**BILL OF MATERIALS**

BAR	NO	SIZE	LENGTH	SHAPE
e(E)	8	#4	7'-10"	—
d1(E)	8	#4	3'-0"	—
d2(E)	9	#5	3'-0"	—
REINFORCEMENT BARS EPOXY COATED			LBS	90
CONCRETE SUPERSTRUCTURE			CU YD	0.6
CONCRETE REMOVAL			CU YD	0.6
MECHANICAL SPLICERS			EACH	16
SAW CUTS			FOOT	13.0
PROTECTIVE COAT			SQ YD	4.0

THE BAR LENGTH SHALL BE VERIFIED IN FIELD PRIOR TO ORDERING THE REINFORCEMENT.



BRIDGE PARAPET REPAIR  
FOR MORE DETAILS SEE SHEET # 10

**TRAFFIC DATA:**

I-90/94: SPEED LIMIT = 55 MPH  
2009 ADT = 208100  
WELLS ST: SPEED LIMIT = 20MPH

Designer: A. Gorengaut  
Checker: J. Midy

ILLINOIS DEPARTMENT OF TRANSPORTATION

**LOCATION: 6  
I-90/94 (DAN RYAN EXPY)  
OVER WELLS STREET  
SN 016-1118**