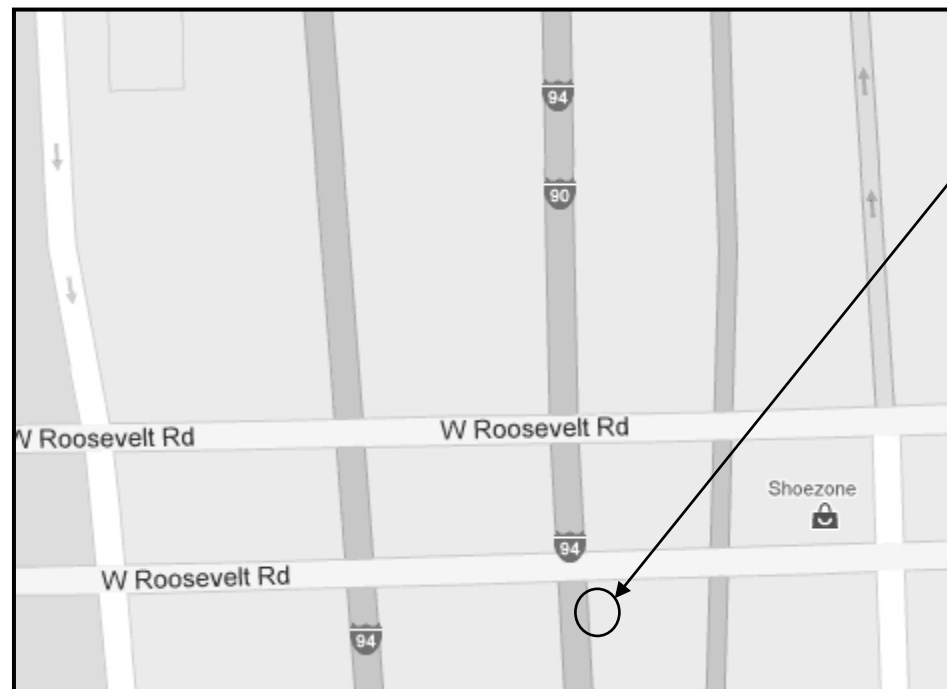


ROUTE	SECTION	COUNTY	TOTAL SHEETS	SHEET NUMBER
VARIOUS	2011-059-I	VARIOUS	44	21

Contract 60P77

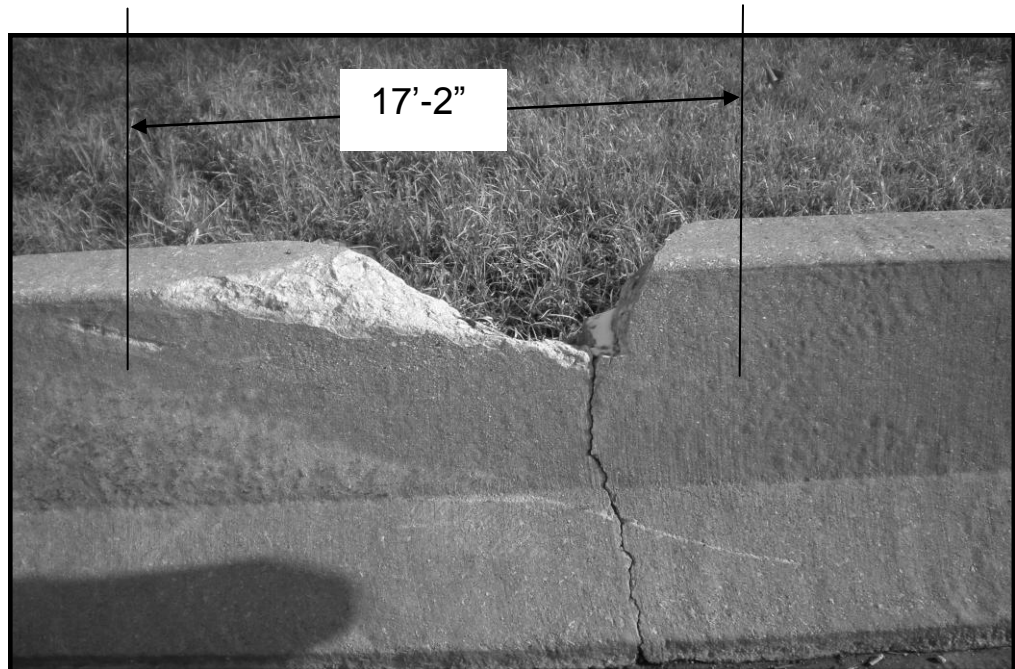
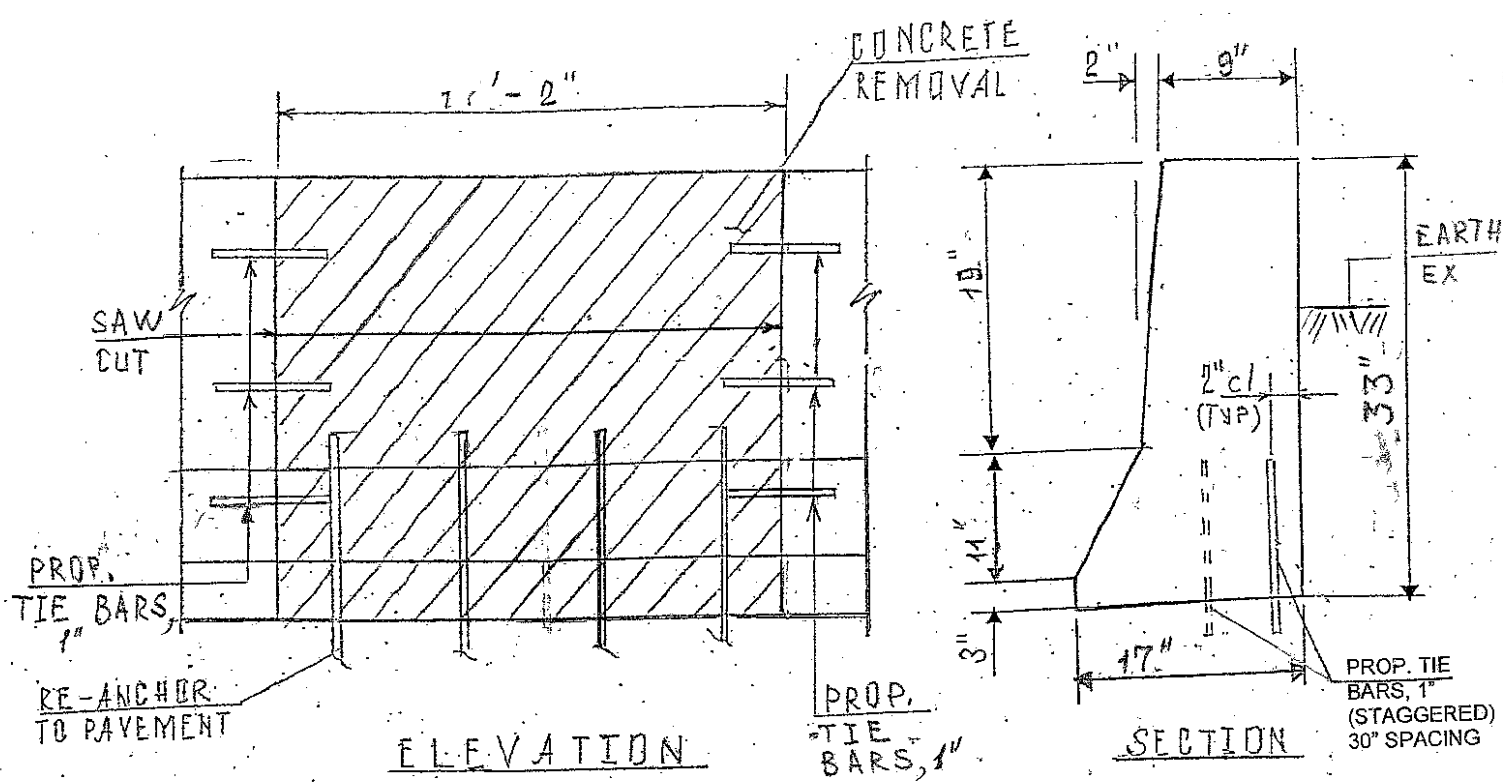
R 14E

T 39N



CITY OF CHICAGO
WEST CHICAGO TOWNSHIP
COOK COUNTY

LOCATION 11: I-90/94 (DAN RYAN) WB
150 FT SOUTH OF ROOSEVELT RD BRIDGE,
RIGHT SIDE



FULL DEPTH REPAIR
REPLACE 17'-2" OF BARRIER WALL
FOR MORE DETAILS SEE SHEET # 8

BILL OF MATERIALS

ITEM	UNIT	QUANTITY
CONCRETE REMOVAL	CU YD	1.8
CONCRETE STRUCTURE	CU YD	1.8
TIE BARS	EACH	13
SAW CUTS	FOOT	5.5
EARTH EXCAVATION	CU YD	2.6
TEMPORARY EROSION CONTROL BLANKET	SQ YD	4.0
TOPSOIL FURNISH AND PLACE, 4"	SQ YD	4.0
SEEDING CLASS 2A	ACRE	0.0008
PROTECTIVE COAT	SQ YD	7.0

TRAFFIC DATA:

I-90/94: SPEED LIMIT = 55 MPH
2009 ADT = 227000

ILLINOIS DEPARTMENT OF TRANSPORTATION

LOCATION: 11
I-90/94 (DAN RYAN EXPY)
SOUTH OF ROOSEVELT ROAD