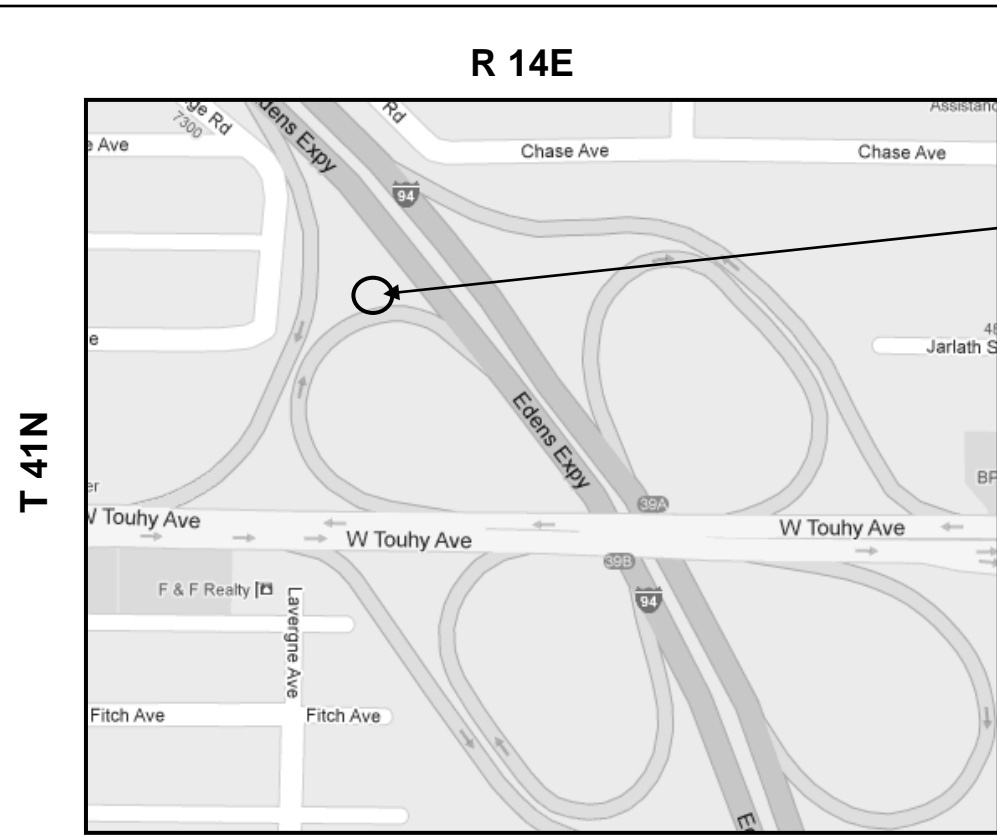


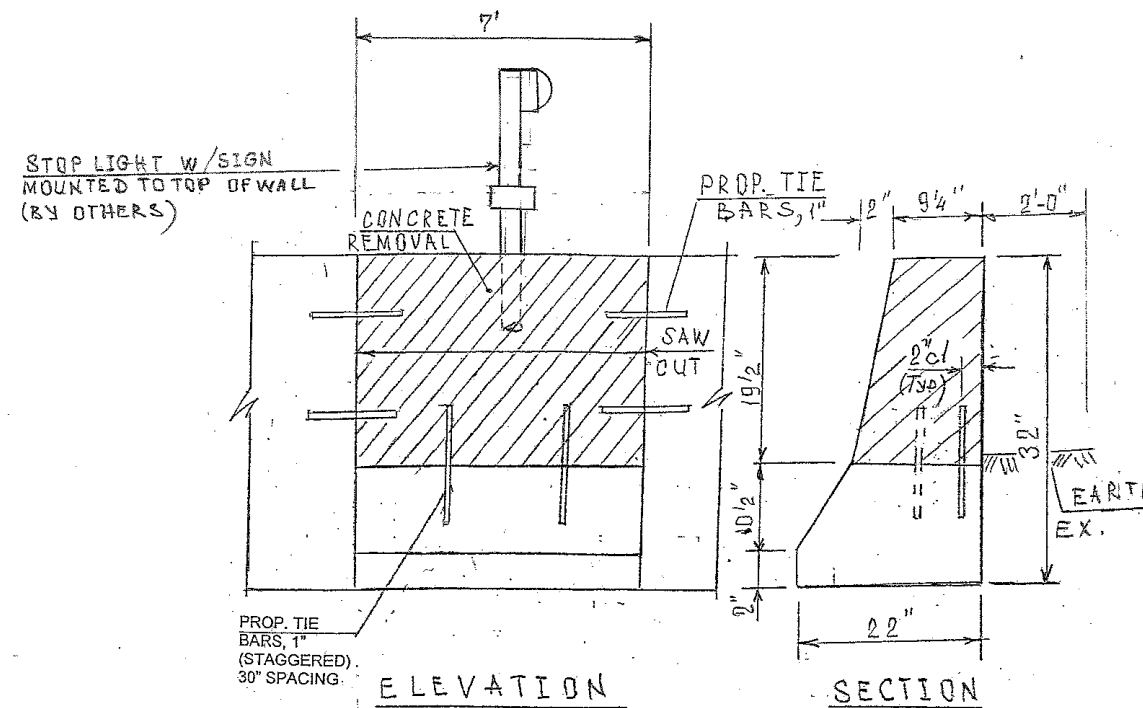
ROUTE	SECTION	COUNTY	TOTAL SHEETS	SHEET NUMBER
VARIOUS	2011-059-1	VARIOUS	44	26

Contract 60P77



VILLAGE OF LINCOLNWOOD
NILES TOWNSHIP, COOK COUNTY

LOCATION 16: I-94 (EDENS EXPY)
WB TOUHY AVE TO I-94 EB RAMP,
LEFT SIDE.



BILL OF MATERIALS

ITEM	UNIT	QUANTITY
CONCRETE REMOVAL	CU YD	0.40
CONCRETE STRUCTURE	CU YD	0.40
TIE BARS	EACH	7
SAW CUTS	FOOT	10.5
EARTH EXCAVATION	CU YD	1.0
TEMPORARY EROSION CONTROL BLANKET	SQ YD	1.5
TOPSOIL FURNISH AND PLACE, 4"	SQ YD	1.5
SEEDING CLASS 2A	ACRE	0.0003
PROTECTIVE COAT	SQ YD	3.0
ELECTRICAL CABLE IN CONDUIT	FOOT	40
SIGN PANEL - TYPE 1	SQ FT	5.0



PARTIAL DEPTH BARRIER REPAIR
FOR MORE DETAILS SEE SHEET # 9

TRAFFIC DATA:

I-90/94 EB TOUHY AVE RAMP: SPEED LIMIT = 20 MPH
2002 ADT = 6600

SHEET 1 OF 4

ILLINOIS DEPARTMENT OF TRANSPORTATION

LOCATION: 16
I-94 (EDENS EXPY) EB
TOUHY AVE RAMP