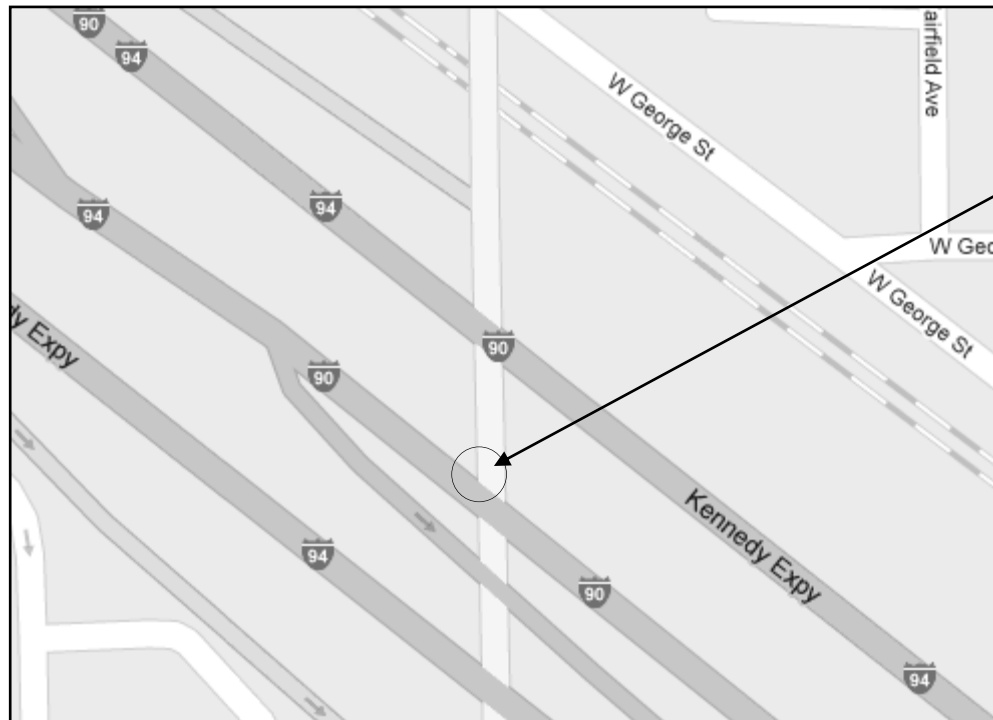


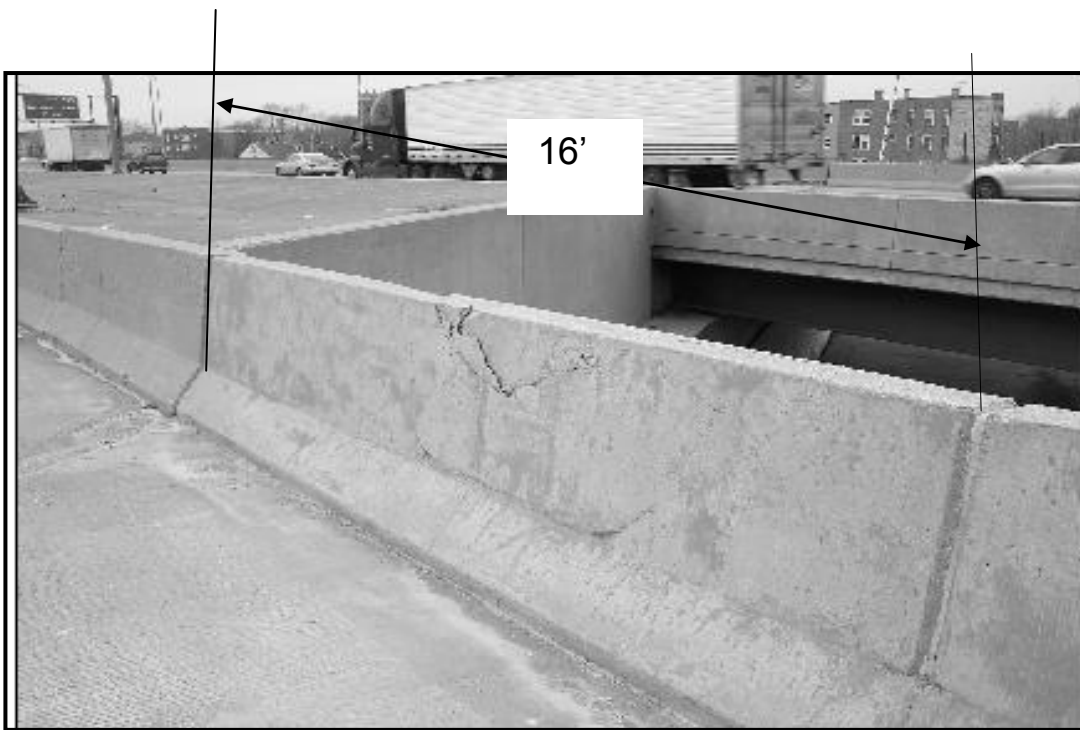
R 13E



T 40N



CITY OF CHICAGO
WEST CHICAGO TOWNSHIP
COOK COUNTY

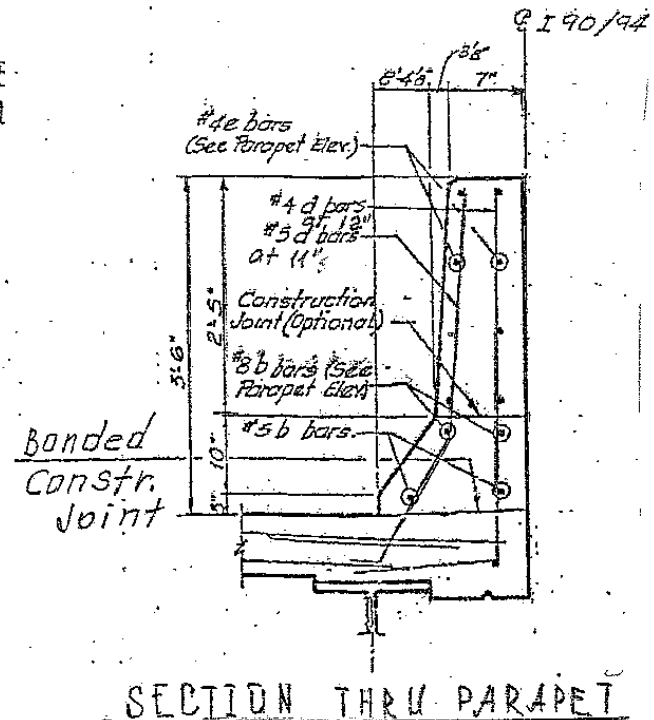
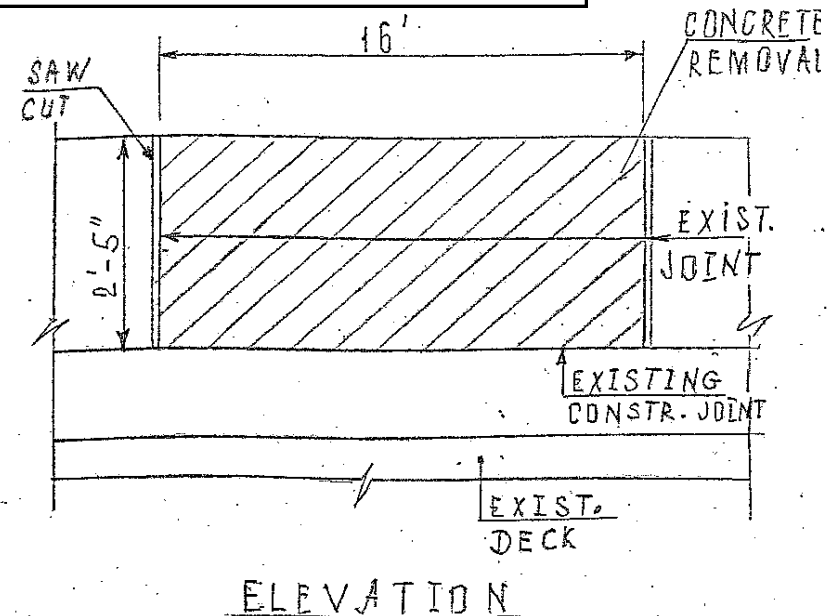


PARAPET REPAIR LOOKING NORTH
FOR MORE DETAILS SEE SHEET # 10

ROUTE	SECTION	COUNTY	TOTAL SHEETS	SHEET NUMBER
VARIOUS	2011-059-I	VARIOUS	44	30

Contract 60P77

LOCATION 17: I-90/94 (KENNEDY EXPY)
WB REVERSIBLE'S OVER CALIFORNIA AVE, RIGHT SIDE (SN 016-1076).



BILL OF MATERIALS

BAR	NO	SIZE	LENGTH	SHAPE
e	8	#4	15'-10"	—
			REINFORCEMENT BARS EPOXY COATED - LBS	90.0
			CONCRETE SUPERSTRUCTURE - CU YD	1.1
			CONCRETE REMOVAL - CU YD	1.1
			MECHANICAL SPLICE'S - EACH	16
			SAW CUTS - FOOT	2.1
			PROTECTIVE COAT - SQ YD	7.7

TRAFFIC DATA:

I-90/94: SPEED LIMIT = 55 MPH
2009 ADT = 299900

CALIFORNIA AVE: SPEED LIMIT = 20-30 MPH
2010 ADT = 15700

Designer: A. Gorengaut
Checker: J. Midy

THE BAR LENGTH SHALL BE VERIFIED
IN FIELD PRIOR TO ORDERING THE
REINFORCEMENT.

ILLINOIS DEPARTMENT OF TRANSPORTATION

LOCATION: 17
I-90/94 (KENNEDY EXPY)
OVER CALIFORNIA AVE
SN 016-1076