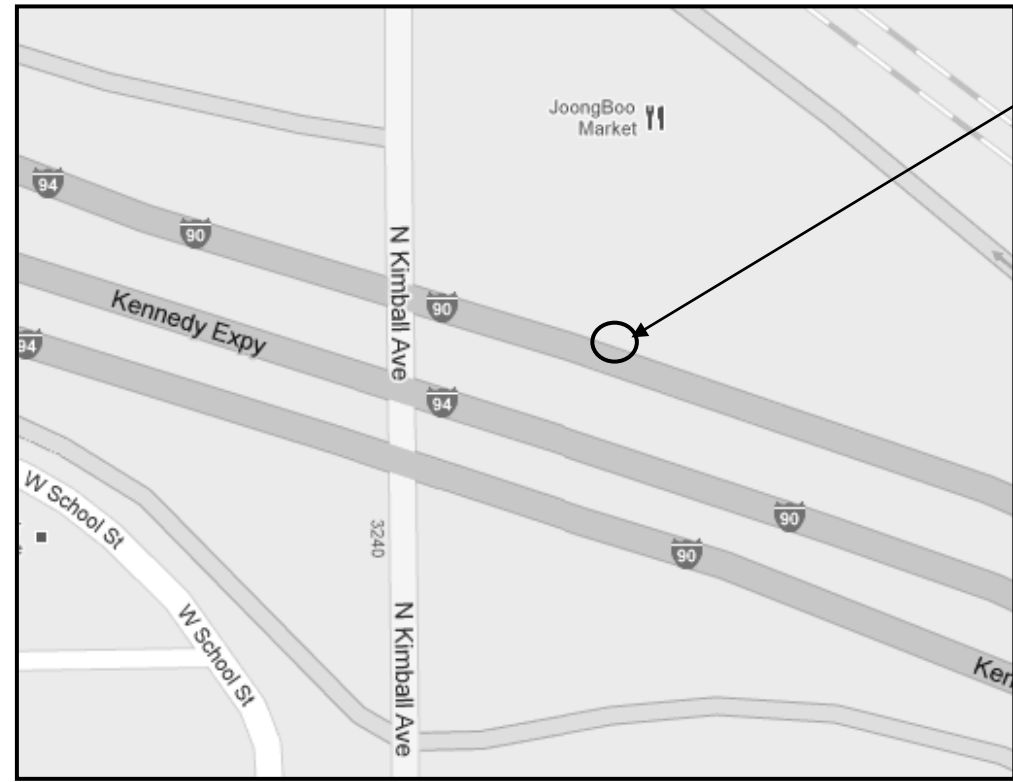


R 13E

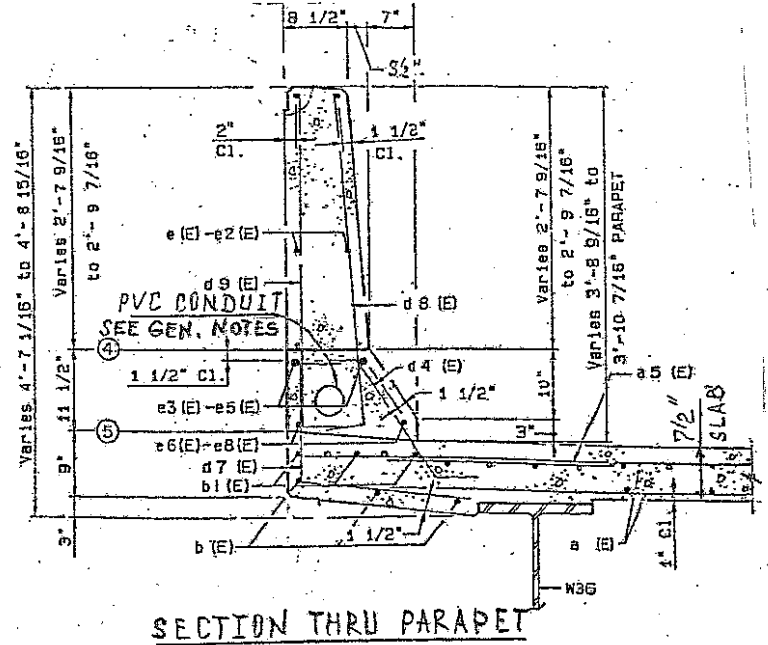
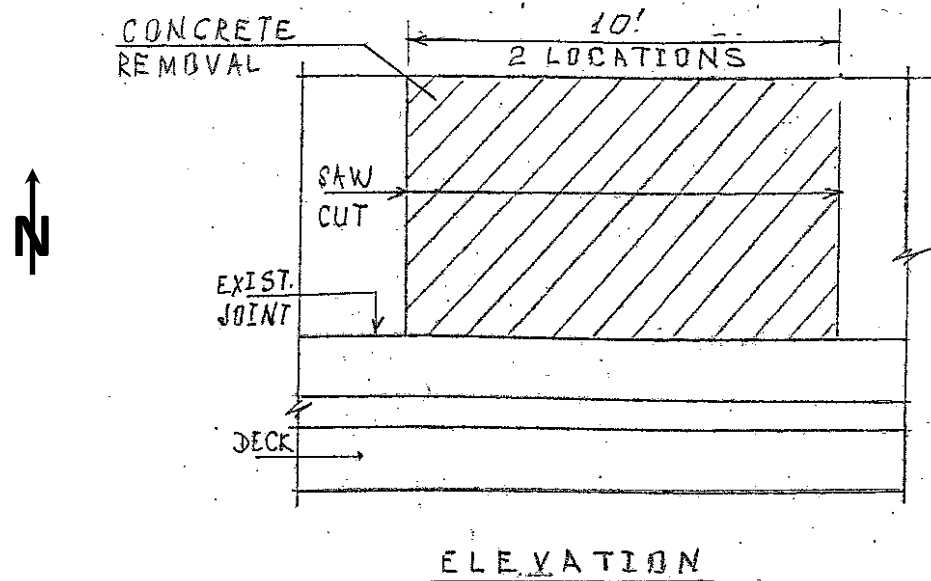
T 40N



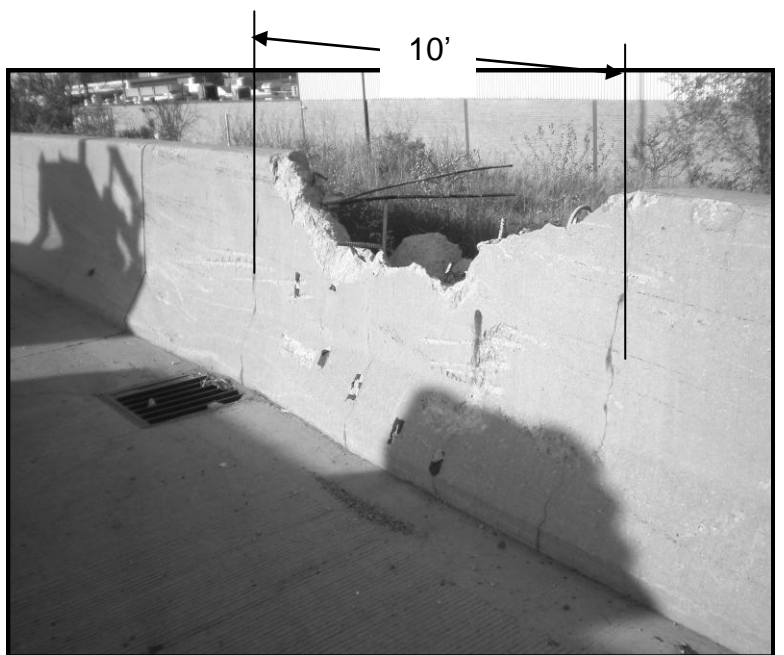
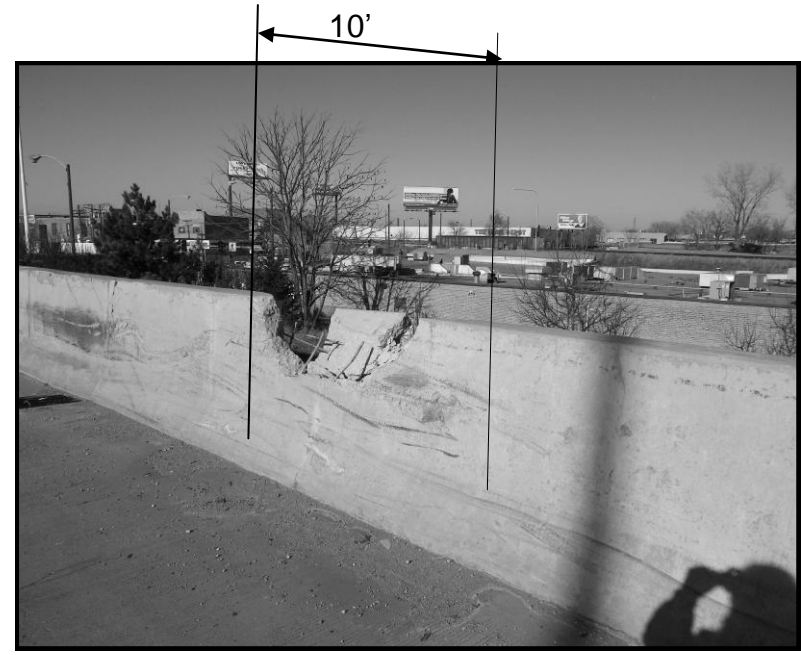
ROUTE	SECTION	COUNTY	TOTAL SHEETS	SHEET NUMBER
VARIOUS	2010-059-I	VARIOUS	44	34

Contract 60P77

LOCATION 21: I-90/94 (KENNEDY EXPY) WB
 NORTH OF KIMBALL AVE EXIT, RIGHT SIDE, 2 LOCATIONS – 10' LONG EACH.
 (APPR. 100' SOUTH OF THE OPENING WITH RAILS OVER KIMBALL AVE, ON THE BRIDGE, SN 016-0120)



CITY OF CHICAGO
 JEFFERSON TOWNSHIP
 COOK COUNTY



PARTIAL DEPTH REPAIR
 REPLACE 10 FT EACH OF BARRIER WALL
 FOR MORE DETAILS SEE SHEET #10

BILL OF MATERIALS (2 LOCATIONS)

BAR	NO	SIZE	LENGTH	SHAPE	
e(E)	12	#4	9'-10"	—	
d8(E)	20	#5	3'-5"	—	
d9(E)	20	#4	3'-5"	—	
REINFORCEMENT BARS EPOXY COATED				LBS	210
CONCRETE SUPERSTRUCTURE				CU YD	1.8
CONCRETE REMOVAL				CU YD	1.8
MECHANICAL SPLICE BARS				EACH	24
SAW CUTS				FOOT	31.0
PROTECTIVE COAT				SQ YD	10.4

THE BAR LENGTH SHALL BE VERIFIED IN FIELD PRIOR TO ORDERING THE REINFORCEMENT.

TRAFFIC DATA:

I-90/94: SPEED LIMIT = 55 MPH
 2009 ADT = 294500

KIMBALL AVE: SPEED LIMIT=20-30 MPH
 2009 ADT = 10000

ILLINOIS DEPARTMENT OF TRANSPORTATION

LOCATION: 21
 I-90/94 (KENNEDY EXPY)
 AT KIMBALL AVE
 SN 016-0120

Designer: A. Gorengaut
 Checker: J. Midy