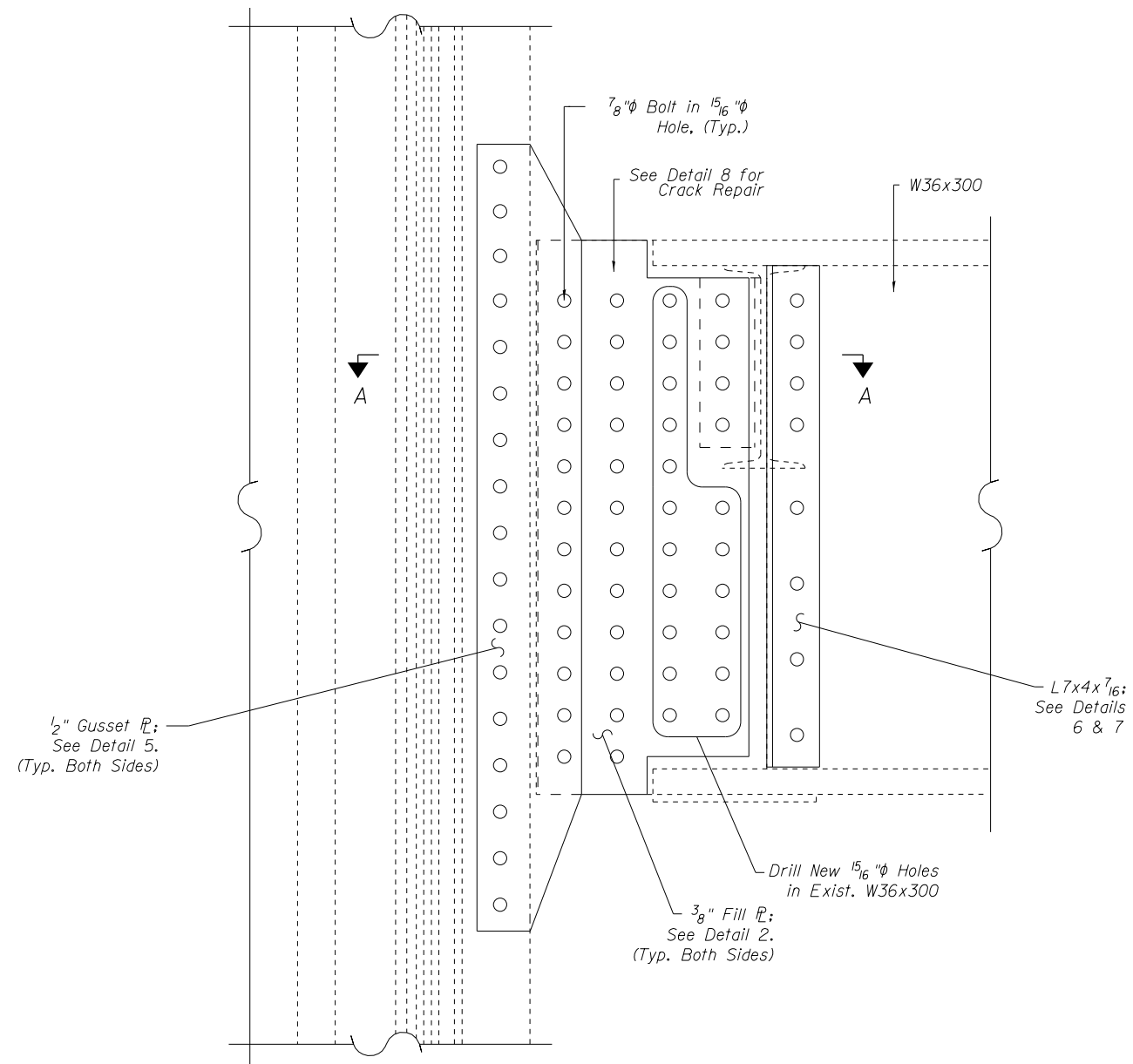


WEST APPROACH FRAMING PLAN



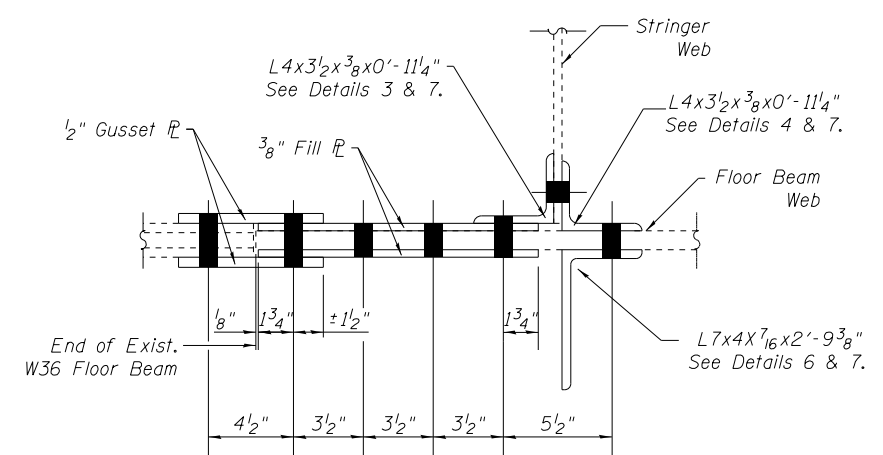
DETAIL 1 - EAST ELEVATION

NOTES:

- Plan dimensions and details relative to existing plans are subject to nominal construction variations. The Contractor shall field verify existing dimensions and details affecting new construction and make necessary approved adjustments prior to construction or ordering of materials. Such variations shall not be cause for additional compensation for a change in scope of the work, however, the Contractor will be paid for the quantity actually furnished at the unit price bid for the work.
- The details shown are the final configurations and details. The Contractor shall be responsible for obtaining approval for all methods and procedures necessary to achieve the details shown.
- The Contractor shall verify all pertinent dimensions prior to fabrication.
- Where removal of existing rivets is required to facilitate the work, remove rivets and replace with the same diameter high strength bolts, unless noted otherwise.
- See Sheet S2 for notes regarding painting of new and existing steel.
- Temporary shoring and cribbing to be provided at bottom Floor Beam A and affected stringer.

BILL OF MATERIAL

ITEM	UNIT	QUANTITY
Structural Steel Repair	Pound	390
Temporary Shoring and Cribbing	Each	2



SECTION A-A