

INDEX OF SHEETS

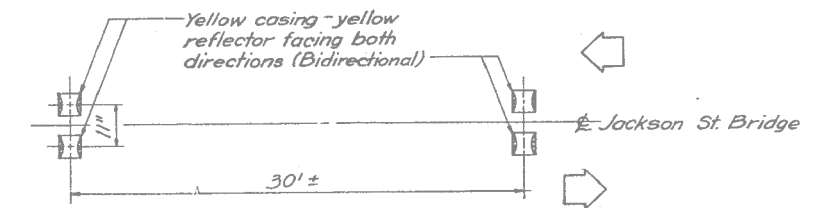
- S1. General Plan and Elevation
- S2. General Notes, Bill of Materials, and Index of Sheets
- S3. Steel Grid Deck Repairs
- S4. Batten Plate Repairs
- S5. Live Load Bearing Details

GENERAL NOTES:

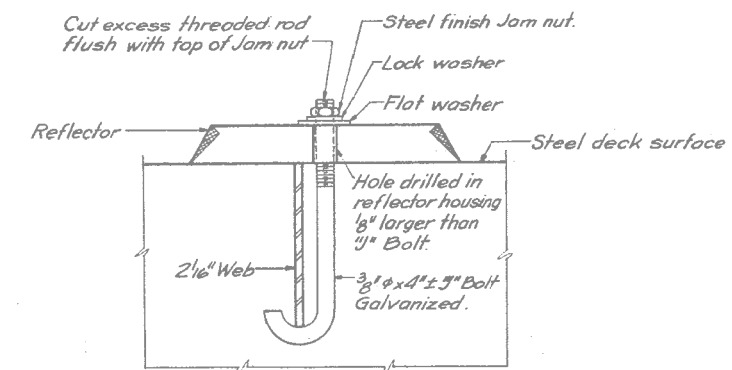
1. Plan dimensions and details relative to existing plans are subject to nominal construction variations. The Contractor shall field verify existing dimensions and details affecting new construction and make necessary approved adjustments prior to construction or ordering of materials. Such variations shall not be cause for additional compensation for a change in scope of the work, however, the Contractor will be paid for the quantity actually furnished at the unit price bid for the work.
2. Fasteners shall be ASTM A325 Type 1, mechanically galvanized bolts. Bolts 7/8"φ holes 15/16"φ, unless noted otherwise.
3. All structural steel shall be AASHTO M270 Grade 36, unless noted otherwise.
4. No field welding permitted except as specified in the Contract Documents.
5. The existing structural steel coating contains lead. The Contractor shall take appropriate precautions to address the presence of material containing lead on this project.
6. Existing structural steel that will be in contact with new structural steel shall be cleaned and painted prior to erection as required by the special Provision "Cleaning and Painting Contact Surface Areas of Existing Steel Structures".
7. All new structural steel shall be shop painted with an inorganic zinc rich primer per AASHTO M300, Type I. Cost included in the applicable Pay Items
8. The removal and reattachment of guardrail, hand rail, steel railings, traffic barrier terminal, and etcetera required for repair work (e.g. Structural Steel Repair, Open Steel Floor) shall be included in the contract unit price of the work item being performed.
9. Removal and disposal of all structural steel necessary to complete the work as detailed on the plans shall be performed in accordance with Section 501 of the Standard Specifications and included in the cost of the associated work.
10. Burning of existing rivets or bolts will not be permitted when the subject fasteners are installed in existing structural steel to remain in place. Such rivets and bolts shall have the head of the fastener sheared off and the shank driven or drilled out. Extreme care shall be exercised when removing such fasteners so as not to damage the existing structural steel to remain. Removal of such fasteners will not be measured for payment but shall be included in the cost of the associated work. Any damage to the existing structural steel to remain in place due to the removal of such fasteners shall be repaired or replaced to the satisfaction of the Engineer at no additional cost to the Department.

TOTAL BILL OF MATERIAL

ITEM DESCRIPTION	UNIT	QUANTITY
Open Steel Floor	Sq. Ft.	280
Structural Steel Repair	Pound	390
Refurbishing of Live Load Bearings	Each	4



PLAN



SECTION

DETAILS OF RAISED REFLECTIVE PAVEMENT MARKERS

FILE NAME =	USER NAME =	DESIGNED - AMS	REVISED -	STATE OF ILLINOIS DEPARTMENT OF TRANSPORTATION	GENERAL NOTES, BILL OF MATERIALS, AND INDEX OF SHEETS STRUCTURE NO. 099-0239	F.A.U. RTE.	SECTION	COUNTY	TOTAL SHEETS	SHEET NO.	
		CHECKED - JMH	REVISED -			297	2011-065-BR	WILL	33	24	
		DRAWN - PRH	REVISED -			CONTRACT NO. 60P84					
		CHECKED - AMS	REVISED -			ILLINOIS FED. AID PROJECT					
				SHEET NO. S2 OF 55 SHEETS							