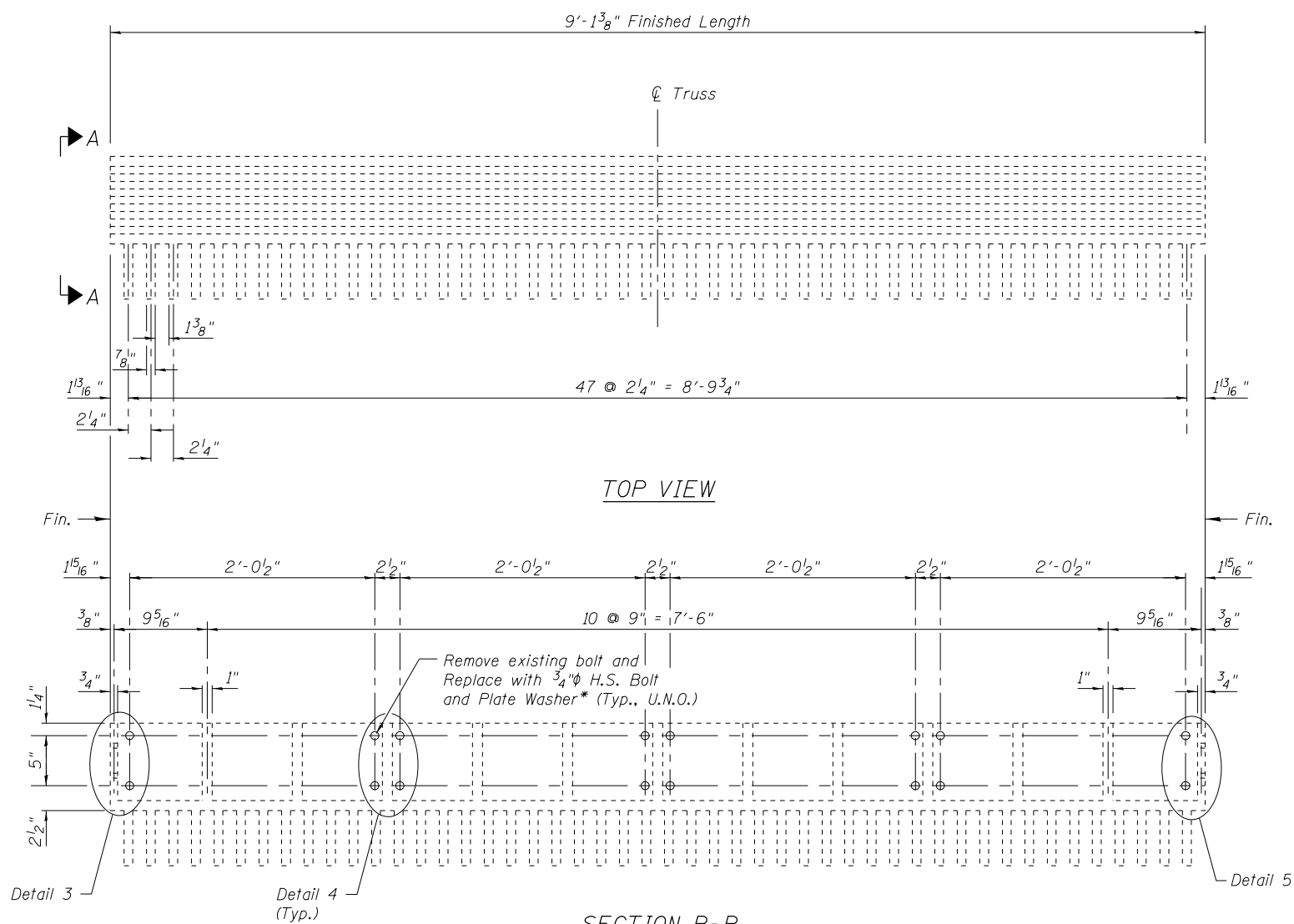


TOP VIEW

SECTION B-B

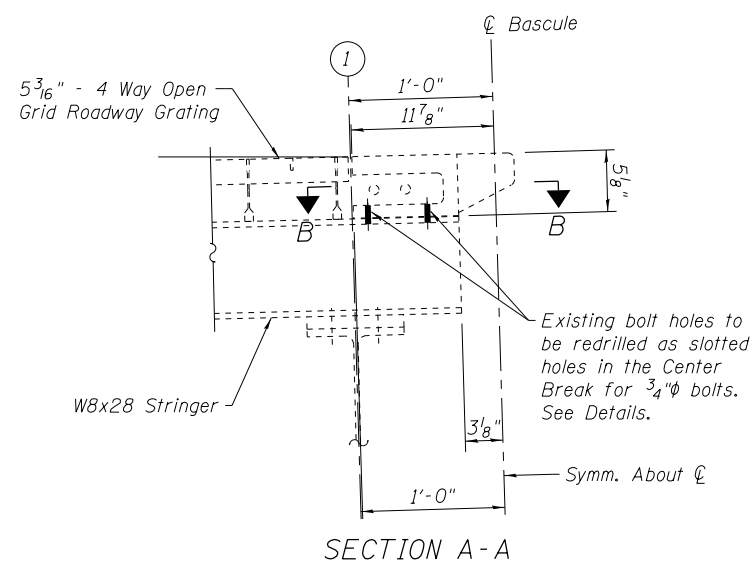
\*Clip plate washers as required to fit.



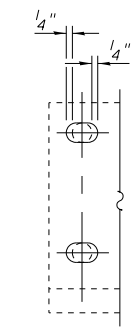
TOP VIEW

SECTION B-B

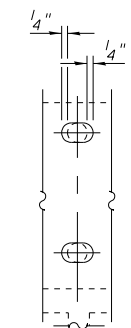
\*Clip plate washers as required to fit.



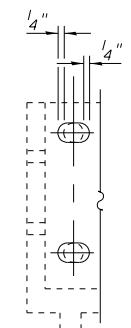
SECTION A-A



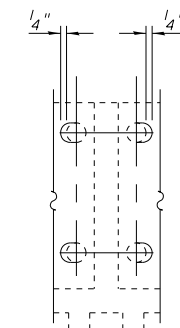
DETAIL 1



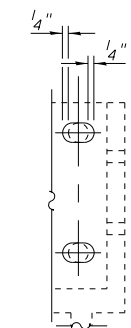
DETAIL 2



DETAIL 3



DETAIL 4  
Only reinstall one pair of bolts at this location.



DETAIL 5

Note:

See Sheet S4 for General Repair Procedure and Final Break Position.

BILL OF MATERIAL

ITEM	UNIT	QUANTITY
Center Break Adjustment	Each	2

FILE NAME =	USER NAME =	DESIGNED - AMS	REVISED -
		CHECKED - JMH	REVISED -
	PLOT SCALE =	DRAWN - PRH	REVISED -
	PLOT DATE =	CHECKED - AMS	REVISED -

STATE OF ILLINOIS  
DEPARTMENT OF TRANSPORTATION

CENTER BREAK DETAILS - I  
STRUCTURE NO. 099-9903

SHEET NO. S3 OF S4 SHEETS

F.A.U. RTE.	SECTION	COUNTY	TOTAL SHEETS	SHEET NO.
341	2011-065-BR	WILL	33	30
CONTRACT NO. 60P84				
ILLINOIS FED. AID PROJECT				