

**ROUTE MARKERS**

FOR U.S. ROUTES  
MI-40-2424

FOR ILLINOIS ROUTES  
MI-50-2424

R.R. UNMARKED ROUTES  
SPECIAL 24" x 18" VARIABLE  
4" BLACK LETTERS ON WHITE  
REFLECTIVE BACKGROUND

**ARROWS SIGNS**

M5-1L-2115

M5-1R-2115

M6-1L-2115

M6-1R-2115

M6-3-2115

**CARDINAL DIRECTION & DETOUR SIGNS**

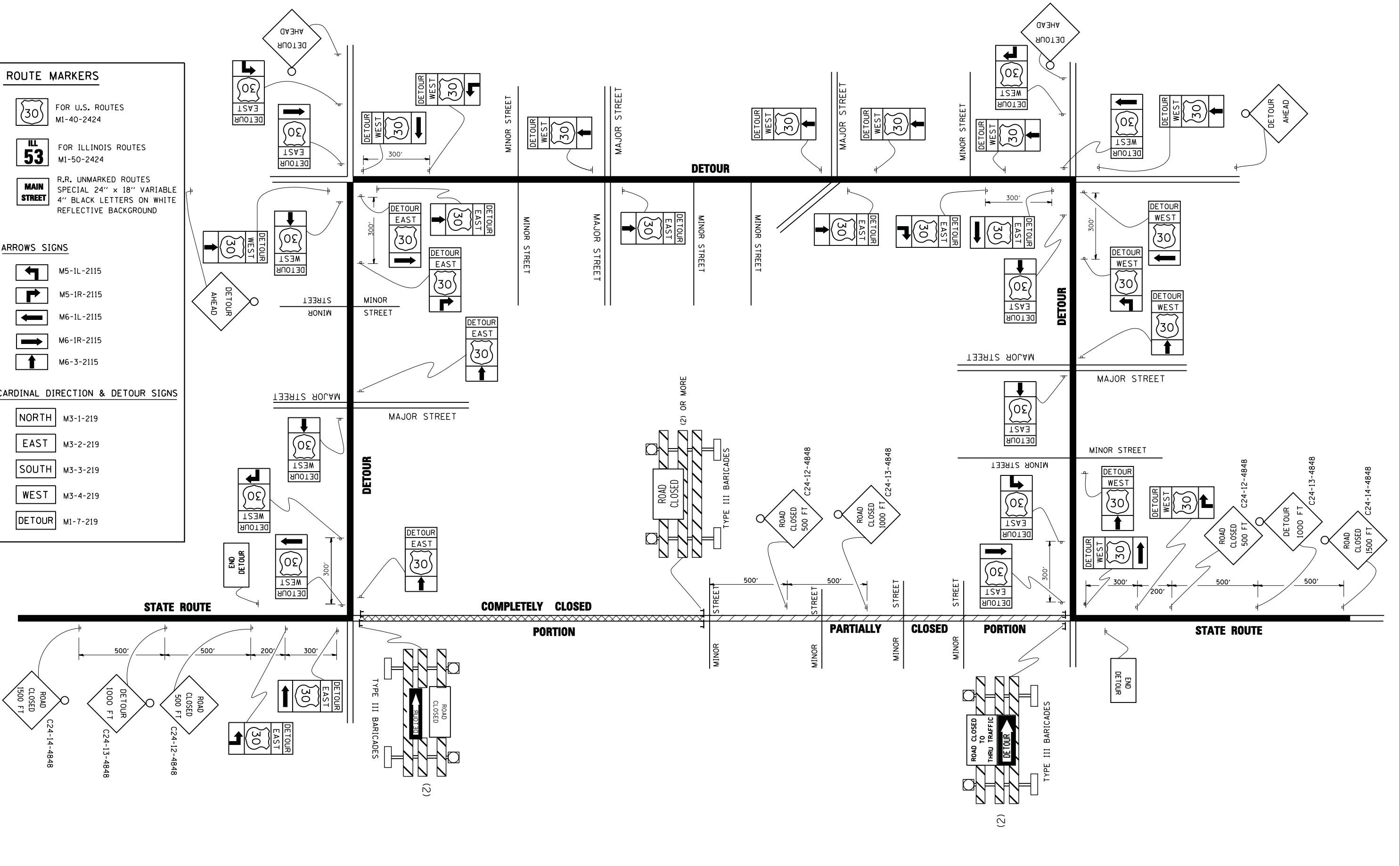
NORTH M3-1-219

EAST M3-2-219

SOUTH M3-3-219

WEST M3-4-219

DETOUR MI-7-219



FILE NAME =  
W:\diststd\22x34\tc21.dgn

USER NAME = gaglionobt

PLOT SCALE = 50.0000' / IN.

PLOT DATE = 1/4/2008

DESIGNED -

DRAWN -

CHECKED -

DATE -

REVISED - 10-18-02

REVISED -

REVISED -

REVISED -

**STATE OF ILLINOIS  
DEPARTMENT OF TRANSPORTATION**

**TYPICAL MARKING  
FOR CLOSING STATE HIGHWAYS**

SCALE: NONE

SHEET NO. 1 OF 1 SHEETS

STA. TO STA.

F.A. RTE.	SECTION	COUNTY	TOTAL SHEETS	SHEET NO.
FAP	2011-065-BR	WILL	33	32
<b>TC-21</b>		CONTRACT NO. 60P84		
FED. ROAD DIST. NO. 1 ILLINOIS FED. AID PROJECT				