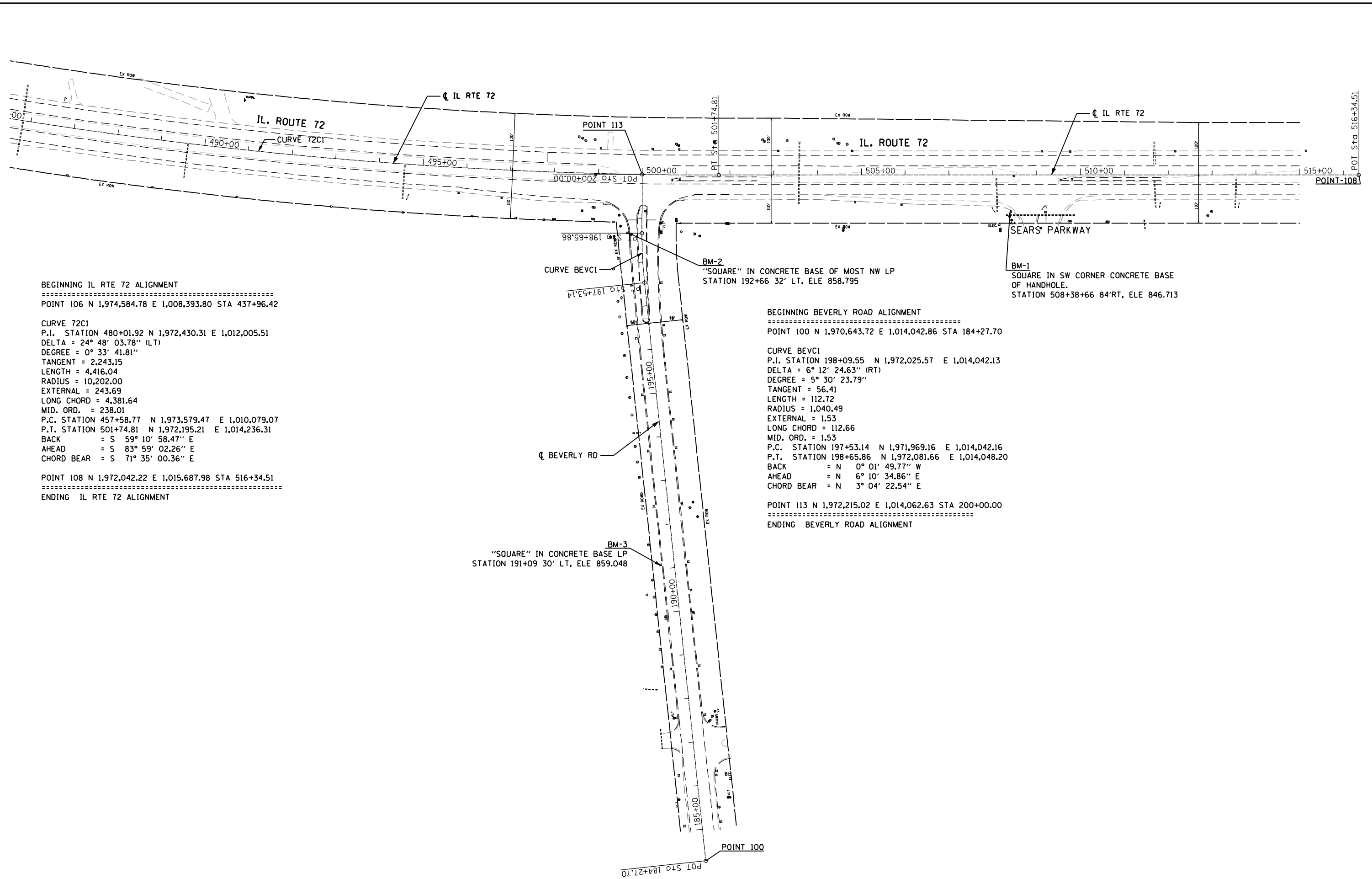


FILE NAME : p:\2009\me09006-ver\proj\phicadd\038-IL72-Beverly\Shvs\08-D160P90-sht-ATB.dgn
 USER : MILENNIA PROFESSIONAL SERVICES



BEGINNING IL RTE 72 ALIGNMENT
 =====
 POINT 106 N 1,974,584.78 E 1,008,393.80 STA 437+96.42
 =====
 CURVE 72C1
 P.I. STATION 480+01.92 N 1,972,430.31 E 1,012,005.51
 DELTA = 24° 48' 03.78" (LT)
 DEGREE = 0° 33' 41.81"
 TANGENT = 2,243.15
 LENGTH = 4,416.04
 RADIUS = 10,202.00
 EXTERNAL = 243.69
 LONG CHORD = 4,381.64
 MID. ORD. = 238.01
 P.C. STATION 457+58.77 N 1,973,579.47 E 1,010,079.07
 P.T. STATION 501+74.81 N 1,972,195.21 E 1,014,236.31
 BACK = S 59° 10' 58.47" E
 AHEAD = S 83° 59' 02.26" E
 CHORD BEAR = S 71° 35' 00.36" E
 =====
 POINT 108 N 1,972,042.22 E 1,015,687.98 STA 516+34.51
 =====
 ENDING IL RTE 72 ALIGNMENT

BEGINNING BEVERLY ROAD ALIGNMENT
 =====
 POINT 100 N 1,970,643.72 E 1,014,042.86 STA 184+27.70
 =====
 CURVE BEVC1
 P.I. STATION 198+09.55 N 1,972,025.57 E 1,014,042.13
 DELTA = 6° 12' 24.63" (RT)
 DEGREE = 5° 30' 23.79"
 TANGENT = 56.41
 LENGTH = 112.72
 RADIUS = 1,040.49
 EXTERNAL = 1.53
 LONG CHORD = 112.66
 MID. ORD. = 1.53
 P.C. STATION 197+53.14 N 1,971,969.16 E 1,014,042.16
 P.T. STATION 198+65.86 N 1,972,081.66 E 1,014,048.20
 BACK = N 0° 01' 49.77" W
 AHEAD = N 6° 10' 34.86" E
 CHORD BEAR = N 3° 04' 22.54" E
 =====
 POINT 113 N 1,972,215.02 E 1,014,062.63 STA 200+00.00
 =====
 ENDING BEVERLY ROAD ALIGNMENT

200 22ND Street, Suite 216, Lombard, IL 60148
 630.705.0110 voice, 630.839.3566 fax
 www.mps-il.com
MILLENNIA PROFESSIONAL SERVICES

DESIGNED -	CJD	REVISED -	
DRAWN -	CJD	REVISED -	
CHECKED -	TVN	REVISED -	
DATE -	4/4/2012	REVISED -	

**STATE OF ILLINOIS
 DEPARTMENT OF TRANSPORTATION**

**IL 72 - HIGGINS RD
 AT BEVERLY RD AND AT ROCK ROAD DR**

ALIGNMENT AND BENCHMARKS

F.A.P. RTE.	SECTION	COUNTY	TOTAL SHEETS	SHEET NO.
341	2011-071-N	COOK/KANE	56	10
CONTRACT NO. 60P90				

SCALE: 1"=100' SHEET NO. 1 OF 1 SHEETS STA. TO STA.