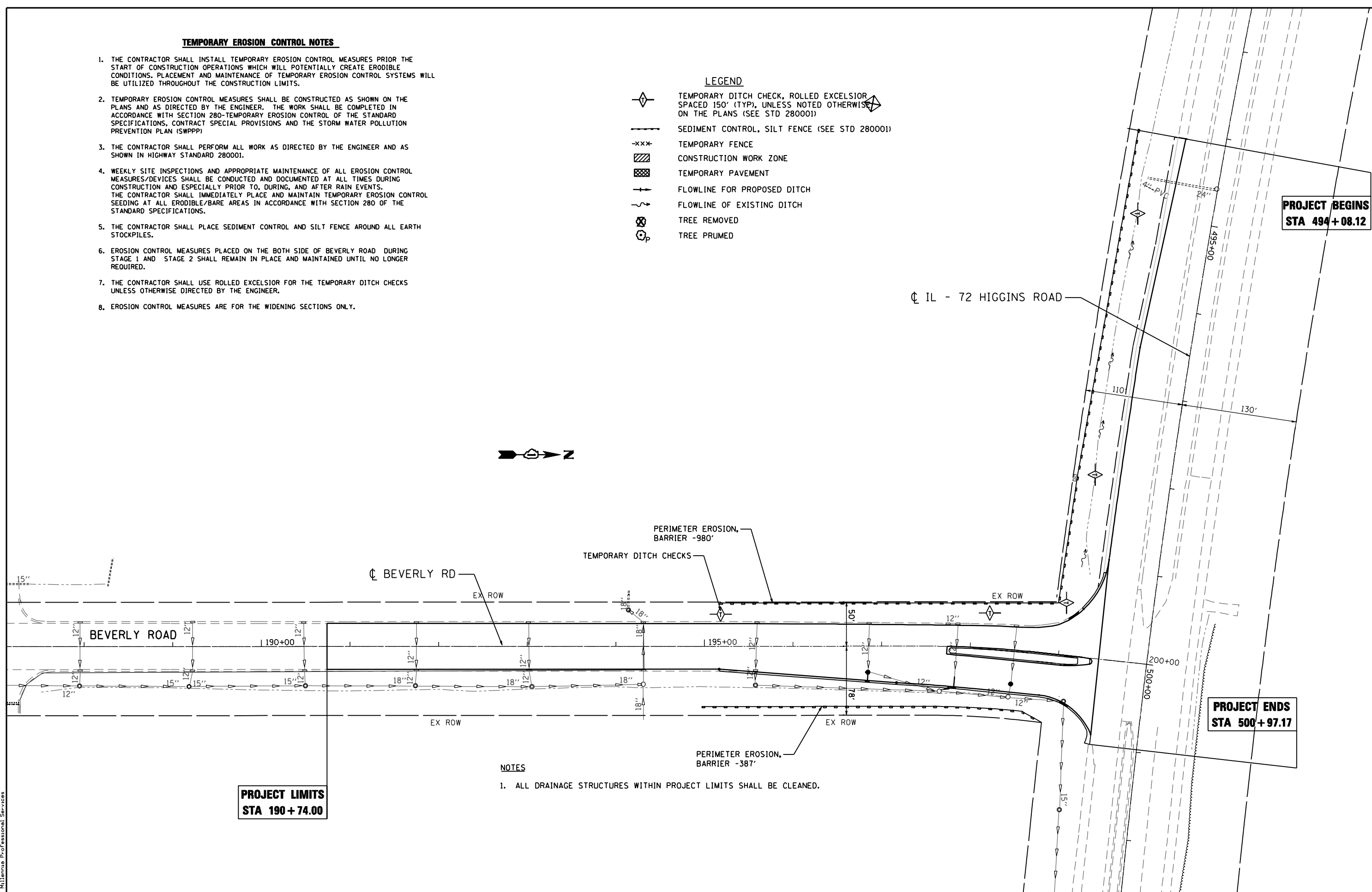


TEMPORARY EROSION CONTROL NOTES

1. THE CONTRACTOR SHALL INSTALL TEMPORARY EROSION CONTROL MEASURES PRIOR TO THE START OF CONSTRUCTION OPERATIONS WHICH WILL POTENTIALLY CREATE ERODIBLE CONDITIONS. PLACEMENT AND MAINTENANCE OF TEMPORARY EROSION CONTROL SYSTEMS WILL BE UTILIZED THROUGHOUT THE CONSTRUCTION LIMITS.
2. TEMPORARY EROSION CONTROL MEASURES SHALL BE CONSTRUCTED AS SHOWN ON THE PLANS AND AS DIRECTED BY THE ENGINEER. THE WORK SHALL BE COMPLETED IN ACCORDANCE WITH SECTION 280-TEMPORARY EROSION CONTROL OF THE STANDARD SPECIFICATIONS, CONTRACT SPECIAL PROVISIONS AND THE STORM WATER POLLUTION PREVENTION PLAN (SWPPP).
3. THE CONTRACTOR SHALL PERFORM ALL WORK AS DIRECTED BY THE ENGINEER AND AS SHOWN IN HIGHWAY STANDARD 280001.
4. WEEKLY SITE INSPECTIONS AND APPROPRIATE MAINTENANCE OF ALL EROSION CONTROL MEASURES/DEVICES SHALL BE CONDUCTED AND DOCUMENTED AT ALL TIMES DURING CONSTRUCTION AND ESPECIALLY PRIOR TO, DURING, AND AFTER RAIN EVENTS. THE CONTRACTOR SHALL IMMEDIATELY PLACE AND MAINTAIN TEMPORARY EROSION CONTROL SEEDING AT ALL ERODIBLE/BARE AREAS IN ACCORDANCE WITH SECTION 280 OF THE STANDARD SPECIFICATIONS.
5. THE CONTRACTOR SHALL PLACE SEDIMENT CONTROL AND SILT FENCE AROUND ALL EARTH STOCKPILES.
6. EROSION CONTROL MEASURES PLACED ON THE BOTH SIDE OF BEVERLY ROAD DURING STAGE 1 AND STAGE 2 SHALL REMAIN IN PLACE AND MAINTAINED UNTIL NO LONGER REQUIRED.
7. THE CONTRACTOR SHALL USE ROLLED EXCELSIOR FOR THE TEMPORARY DITCH CHECKS UNLESS OTHERWISE DIRECTED BY THE ENGINEER.
8. EROSION CONTROL MEASURES ARE FOR THE WIDENING SECTIONS ONLY.

LEGEND

- TEMPORARY DITCH CHECK, ROLLED EXCELSIOR SPACED 150' (TYP), UNLESS NOTED OTHERWISE ON THE PLANS (SEE STD 280001)
- SEDIMENT CONTROL, SILT FENCE (SEE STD 280001)
- TEMPORARY FENCE
- CONSTRUCTION WORK ZONE
- TEMPORARY PAVEMENT
- FLOWLINE FOR PROPOSED DITCH
- FLOWLINE OF EXISTING DITCH
- TREE REMOVED
- TREE PRUNED



**PROJECT BEGINS
STA 494+08.12**

**PROJECT ENDS
STA 500+97.17**

**PROJECT LIMITS
STA 190+74.00**

NOTES

1. ALL DRAINAGE STRUCTURES WITHIN PROJECT LIMITS SHALL BE CLEANED.

FILE NAME : p:\2009\me09086.vor\var-ph1\cadd\1038-IL72-Beverly\Shvs\1068p90-sht-Erosion.dgn
 USER : ME09086
 MILLENNIA PROFESSIONAL SERVICES



200 22ND Street, Suite 216, Lombard, IL 60148
 630.705.0110 voice, 630.839.3566 fax
 www.mps-il.com
MILLENNIA PROFESSIONAL SERVICES

DESIGNED -	CJD	REVISED -	
DRAWN -	CJD	REVISED -	
CHECKED -	TVN	REVISED -	
DATE -	4/5/2012	REVISED -	

**STATE OF ILLINOIS
DEPARTMENT OF TRANSPORTATION**

**IL 72 - HIGGINS RD
AT BEVERLY RD AND AT ROCK ROAD DR**

**EROSION AND SEDIMENT
CONTROL PLAN**

F.A.P. RTE.	SECTION	COUNTY	TOTAL SHEETS	SHEET NO.
341	2011-071-N	COOK/KANE	56	16
CONTRACT NO. 60P90				
FED. ROAD DIST. NO. 1 ILLINOIS FED. AID PROJECT				

SCALE: 1"=50' SHEET NO. 1 OF 1 SHEETS STA. 195+16.64 TO STA. 200+00.00

p:\2009\me09086.vor\var-ph1\cadd\1038-IL72-Beverly\Shvs\1068p90-sht-Erosion.dgn