

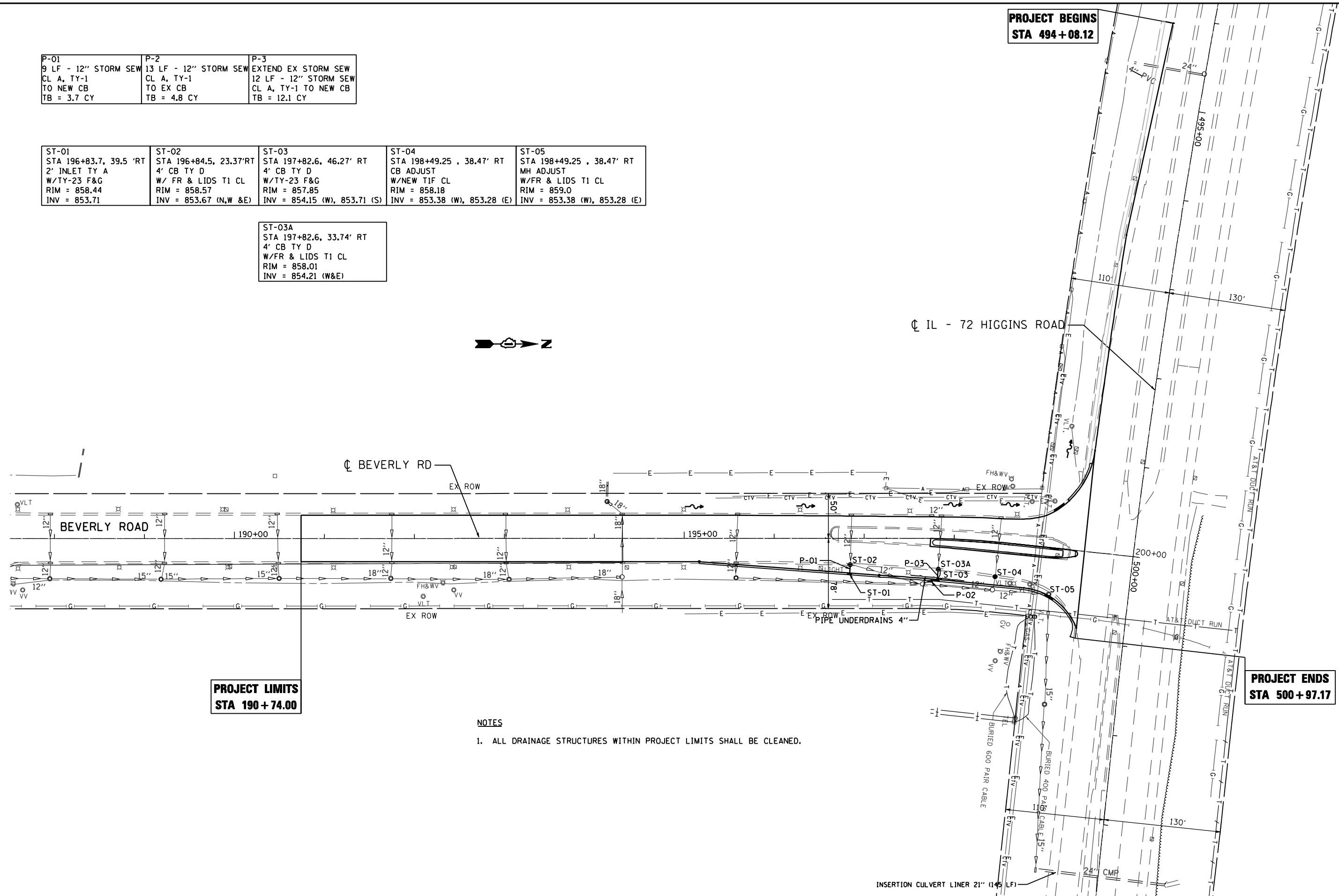
P-01 9 LF - 12" STORM SEW CL A, TY-1 TO NEW CB TB = 3.7 CY	P-2 13 LF - 12" STORM SEW CL A, TY-1 TO EX CB TB = 4.8 CY	P-3 EXTEND EX STORM SEW 12 LF - 12" STORM SEW CL A, TY-1 TO NEW CB TB = 12.1 CY
--	---	---

ST-01 STA 196+83.7, 39.5' RT 2' INLET TY A W/TY-23 F&G RIM = 858.44 INV = 853.71	ST-02 STA 196+84.5, 23.37' RT 4' CB TY D W/ FR & LIDS T1 CL RIM = 858.57 INV = 853.67 (N,W &E)	ST-03 STA 197+82.6, 46.27' RT 4' CB TY D W/TY-23 F&G RIM = 857.85 INV = 854.15 (W), 853.71 (S)	ST-04 STA 198+49.25, 38.47' RT CB ADJUST W/NEW T1F CL RIM = 858.18 INV = 853.38 (W), 853.28 (E)	ST-05 STA 198+49.25, 38.47' RT MH ADJUST W/FR & LIDS T1 CL RIM = 859.0 INV = 853.38 (W), 853.28 (E)
---	---	---	--	--

ST-03A STA 197+82.6, 33.74' RT 4' CB TY D W/FR & LIDS T1 CL RIM = 858.01 INV = 854.21 (W&E)
--

**PROJECT BEGINS
STA 494 + 08.12**

**PROJECT ENDS
STA 500 + 97.17**



**PROJECT LIMITS
STA 190 + 74.00**

NOTES

1. ALL DRAINAGE STRUCTURES WITHIN PROJECT LIMITS SHALL BE CLEANED.

FILE NAME : P:\2009\ME\9006 - Var\Var - PH11\CADD\038-IL-72-Beverly\Shis\016899-sht-dr-ans.dgn
 USER : ME
 MILLENNIA PROFESSIONAL SERVICES



200 22ND Street, Suite 216, Lombard, IL 60148
 630.705.0110 voice, 630.839.3566 fax
 www.mps-il.com
MILLENNIA PROFESSIONAL SERVICES

DESIGNED - CJD	REVISED -
DRAWN - CJD	REVISED -
CHECKED - TVN	REVISED -
DATE - 5/9/2012	REVISED -

**STATE OF ILLINOIS
DEPARTMENT OF TRANSPORTATION**

**IL 72 - HIGGINS RD
AT BEVERLY RD AND AT ROCK ROAD DR**

DRAINAGE AND UTILITY PLAN

SCALE: 1"=50' SHEET NO. 1 OF 1 SHEETS STA. 195+16.64 TO STA. 200+00.00

F.A.P. RTE.	SECTION	COUNTY	TOTAL SHEETS	SHEET NO.
341	2011-071-N	COOK/KANE	56	17
CONTRACT NO. 60P90				

FED. ROAD DIST. NO. 1 ILLINOIS FED. AID PROJECT

P:\2009\ME\9006 - Var\Var - PH11\CADD\038-IL-72-Beverly\Shis\016899-sht-dr-ans.dgn