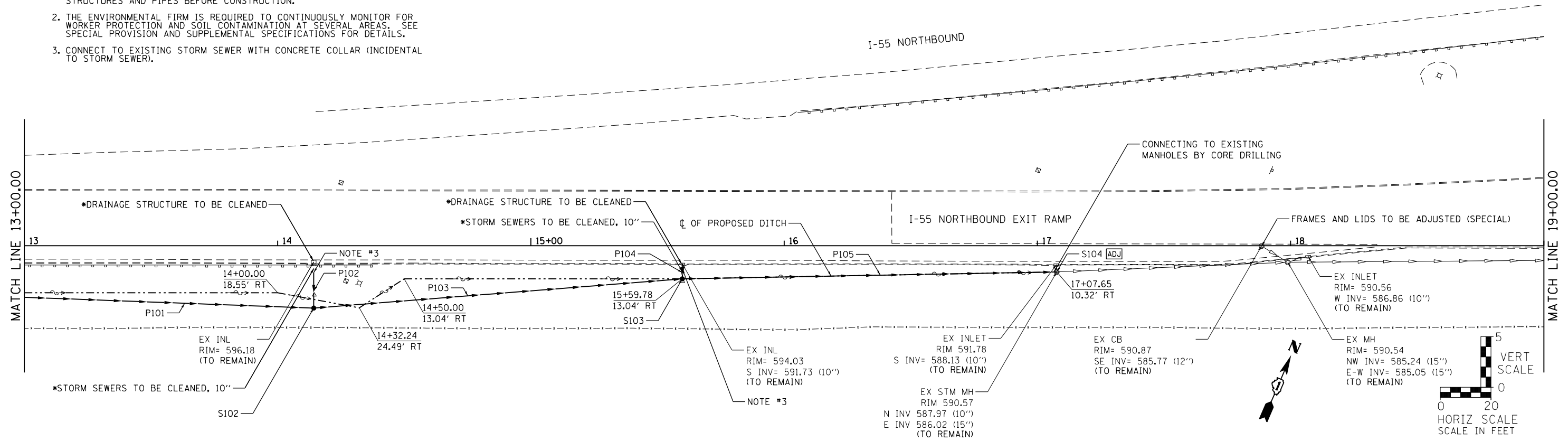


NOTES:

- *1. CONTRACTOR TO VERIFY UPSTREAM AND DOWNSTREAM INVERTS OF STRUCTURES AND PIPES BEFORE CONSTRUCTION.
- 2. THE ENVIRONMENTAL FIRM IS REQUIRED TO CONTINUOUSLY MONITOR FOR WORKER PROTECTION AND SOIL CONTAMINATION AT SEVERAL AREAS. SEE SPECIAL PROVISION AND SUPPLEMENTAL SPECIFICATIONS FOR DETAILS.
- 3. CONNECT TO EXISTING STORM SEWER WITH CONCRETE COLLAR (INCIDENTAL TO STORM SEWER).

DATE	
BY	
PLAN	
SURVEYED	
PLOTTED	
ALIGNED	
CHECKED	
NO. _____	
FILE NAME	

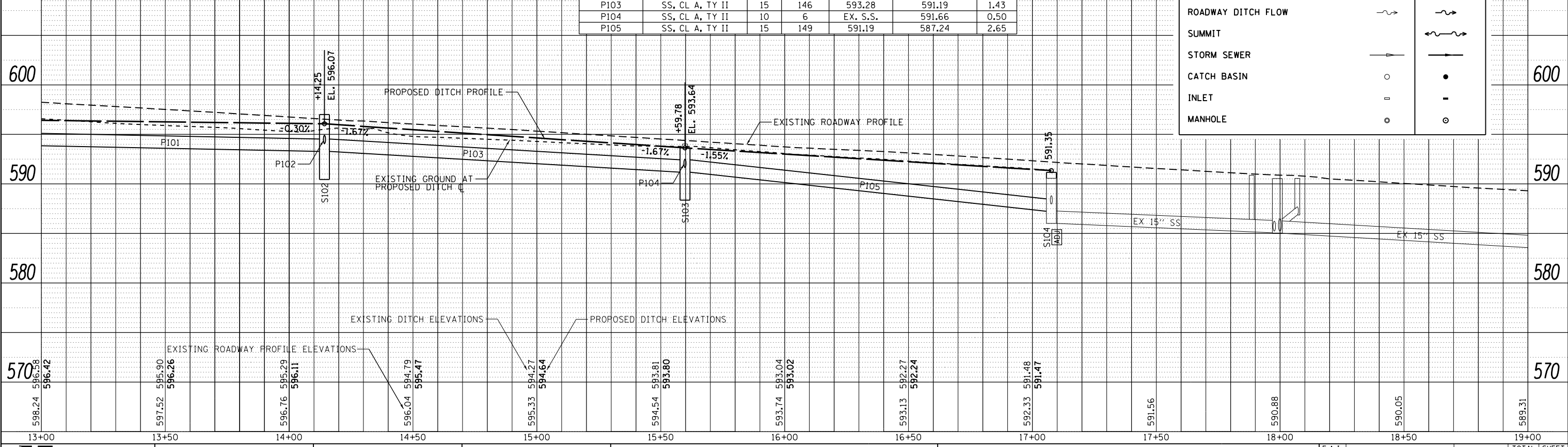


STORM SEWER STRUCTURE						
ID	TY	STA.	OFF.	RIM EL.	CASTING TY.	TYPE OF WORK TO BE COMPLETED
S102	CB	14+14.25	24.59	597.00	TY 1, CL	CB, TY A, 4' DIA.
S103	CB	15+59.8	13.04	593.64	TY 8	CB, TY A, 4' DIA.
S104	CB	17+07.65	10.32	591.35	TY 8	CATCH BASINS TO BE ADJUSTED

STORM SEWER PIPE						
ID	MATERIAL	SIZE (IN)	LENGTH (FT)	INVERT ELEVATION		SLOPE (%)
				UPSTREAM	DOWNSTREAM	
P101	SS, CL A, TY II	15	162	594.09	593.28	0.50
P102	SS, CL A, TY II	10	14	EX. S.S.	594.08	0.50
P103	SS, CL A, TY II	15	146	593.28	591.19	1.43
P104	SS, CL A, TY II	10	6	EX. S.S.	591.66	0.50
P105	SS, CL A, TY II	15	149	591.19	587.24	2.65

LEGEND		
BOUNDARY LINES/SYMBOLS	EXISTING	PROPOSED
DITCH & SWALE BOTTOM	---	---
ROADWAY DITCH FLOW	~	~
SUMMIT	~	~
STORM SEWER	—	—
CATCH BASIN	○	●
INLET	—	—
MANHOLE	○	○

DATE	
BY	
PROFILE	
SURVEYED	
PLOTTED	
GRADES CHECKED	
NO. _____	
FILE NAME	



STRAND ASSOCIATES*
1170 SOUTH HOUBOLT ROAD
JOLIET, ILLINOIS 60431
(815) 744-4200

USER NAME = dennisw	DESIGNED - TJS	REVISED -
PLOT SCALE = 48.0000' / in.	DRAWN - DJW	REVISED -
PLOT DATE = 4/2/2012	CHECKED - MAG	REVISED -
	DATE - 4-2-12	REVISED -

STATE OF ILLINOIS
DEPARTMENT OF TRANSPORTATION

I-55 NORTHBOUND EXIT RAMP
DRAINAGE & GRADING PLAN & PROFILE
SCALE: 1" = 20'
SHEET 2 OF 3 SHEETS
STA. 13+00.00 TO STA. 19+00.00

F.A.I. RTE. 55	SECTION 112-636T	COUNTY COOK	TOTAL SHEETS 36	SHEET NO. 20
CONTRACT NO. 60T37			FED. ROAD DIST. NO. 1 ILLINOIS FED. AID PROJECT	