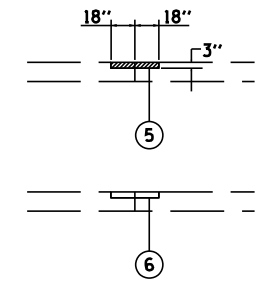
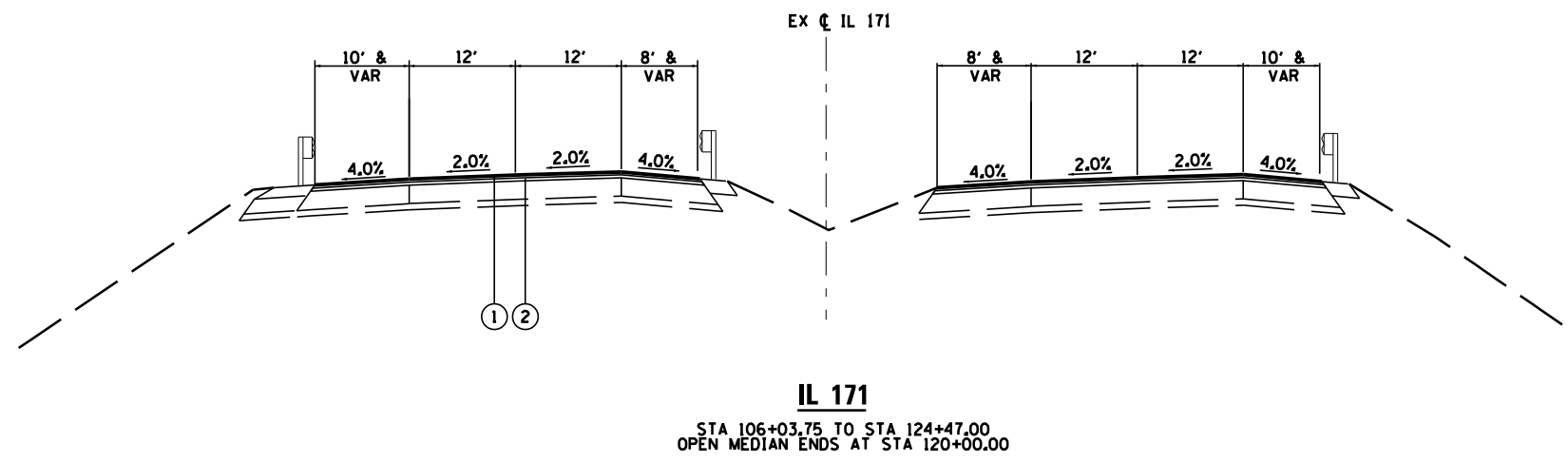


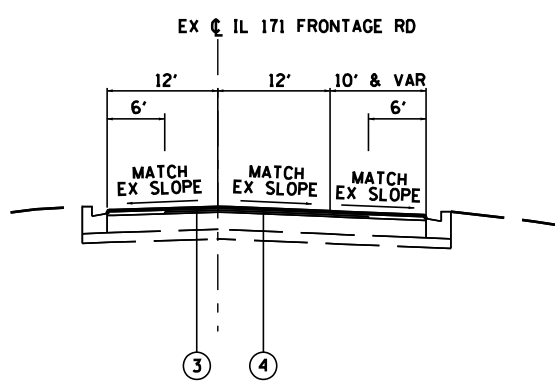
**LEGEND:**

- ① POLYMERIZED HOT-MIX ASPHALT SURFACE COURSE, STONE MATRIX ASPHALT, N80, 2"
- ② POLYMERIZED HOT-MIX ASPHALT BINDER COURSE, STONE MATRIX ASPHALT, N80, 2"
- ③ HOT-MIX ASPHALT SURFACE COURSE, MIX "D", N70, 1 1/2"
- ④ POLYMERIZED LEVELING BINDER (MACHINE METHOD), IL-4.75, N50, 1"
- ⑤ HMA REMOVAL PARTIAL DEPTH, 3"
- ⑥ HMA BINDER COURSE, IL-19.0, N70



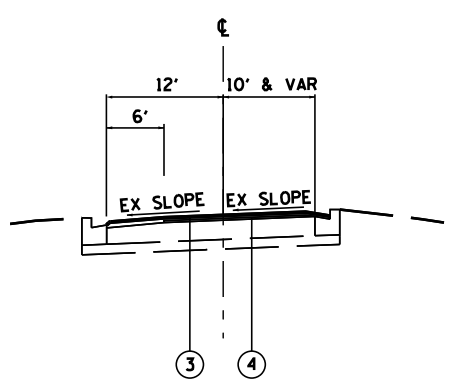
**DETAIL A**

LONGITUDINAL JOINT REPAIR (TYP)  
 LOCATIONS TO BE DETERMINED BY ENGINEER



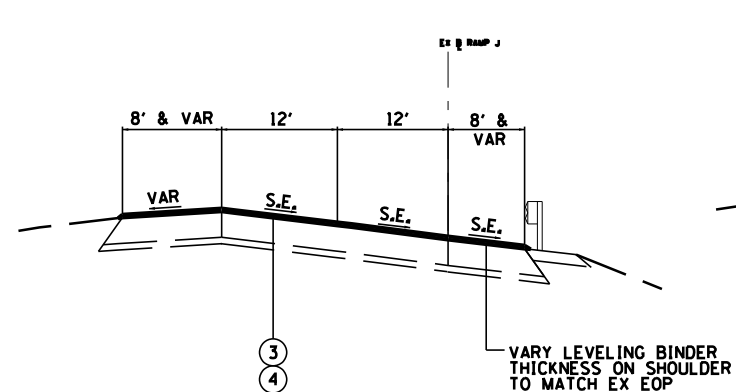
**FRONTAGE RD**

STA 39+70.00 TO STA 50+00.00



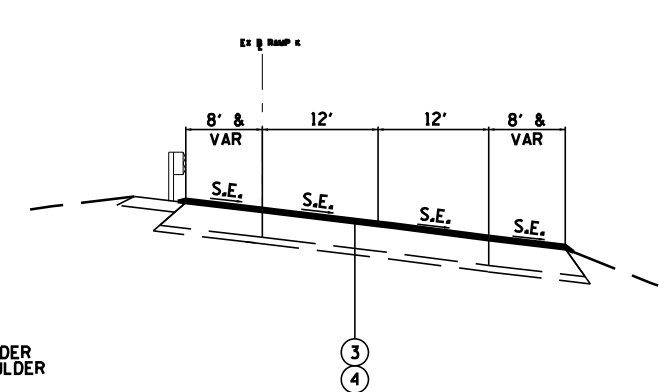
**FRONTAGE RD**

STA 50+00.00 TO STA 58+73.52



**RAMP J (LOOKING NORTH)**

STA 17+20.00 TO STA 26+41.00



**RAMP K (LOOKING NORTH)**

STA 17+34.00 TO STA 27+00.00

FILE NAME =	DESIGNED - AAF	REVISED -
... \D160T38-ADV-pr-tyr-01.dgn	DRAWN - TMB	REVISED -
USER NAME = tblank	CHECKED - JMM	REVISED -
PLOT DATE = 3/22/2012	DATE - 3/23/2012	REVISED -



STATE OF ILLINOIS  
 DEPARTMENT OF TRANSPORTATION

PROPOSED TYPICAL SECTIONS			
F.A.P. RTE.	SECTION	COUNTY	TOTAL SHEETS
372	.	COOK	40
SCALE: NTS SHEET NO. 1 OF 1 SHEETS STA. TO STA.			SHEET NO. 9

\*0102-683K, ETC&0507-635K)RS-1

CONTRACT NO. 60T38	
ILLINOIS FED. AID PROJECT	