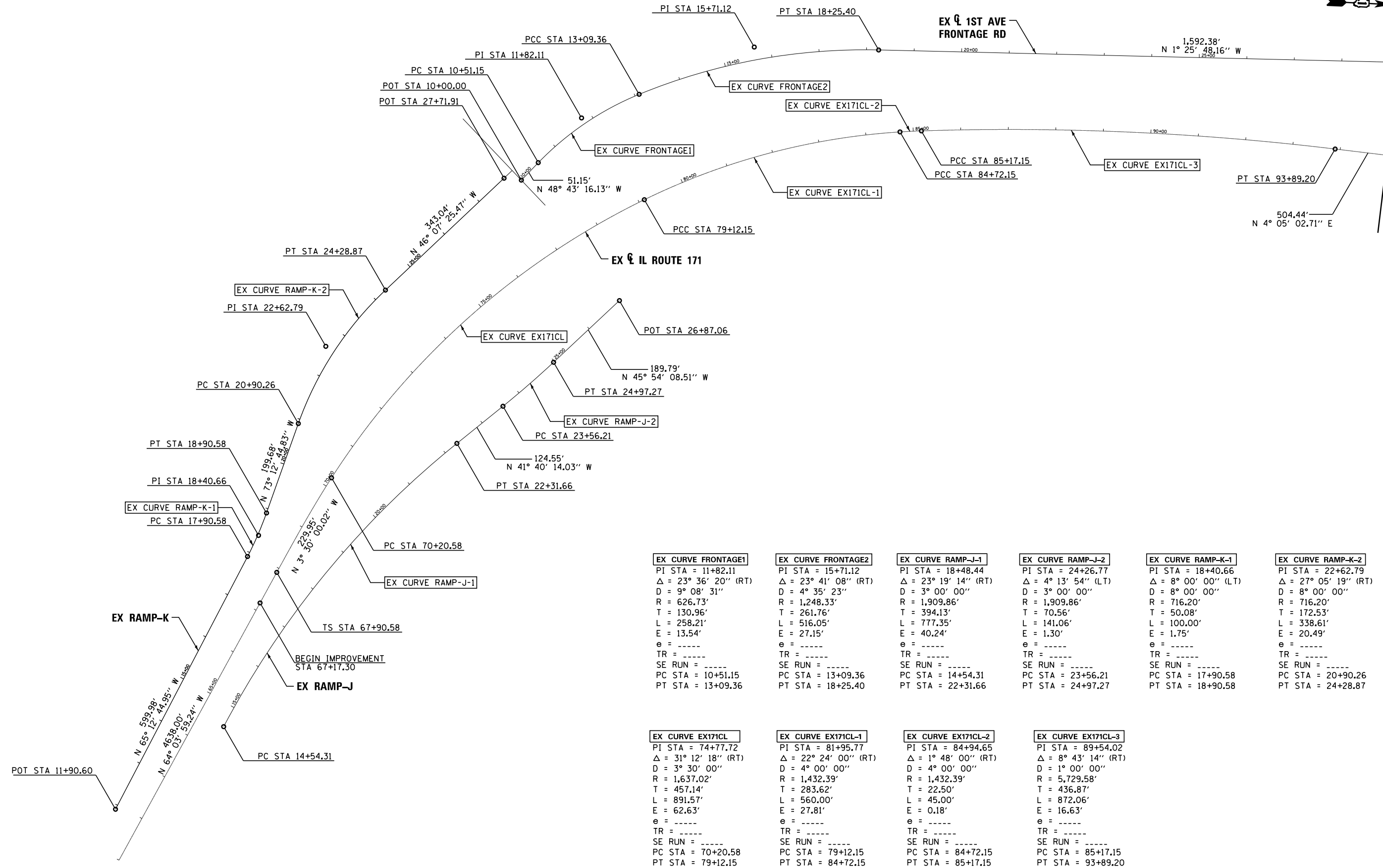




MATCH LINE STA 95+00.00



EX CURVE FRONTAGE1 PI STA = 11+82.11 $\Delta = 23^\circ 36' 20''$ (RT) D = 9° 08' 31" R = 626.73' T = 130.96' L = 258.21' E = 13.54' e = ---- TR = ---- SE RUN = ---- PC STA = 10+51.15 PT STA = 13+09.36	EX CURVE FRONTAGE2 PI STA = 15+71.12 $\Delta = 23^\circ 41' 08''$ (RT) D = 4° 35' 23" R = 1,248.33' T = 261.76' L = 516.05' E = 27.15' e = ---- TR = ---- SE RUN = ---- PC STA = 13+09.36 PT STA = 18+25.40	EX CURVE RAMP-J-1 PI STA = 18+48.44 $\Delta = 23^\circ 19' 14''$ (RT) D = 3° 00' 00" R = 1,909.86' T = 394.13' L = 777.35' E = 40.24' e = ---- TR = ---- SE RUN = ---- PC STA = 14+54.31 PT STA = 22+31.66	EX CURVE RAMP-J-2 PI STA = 24+26.77 $\Delta = 4^\circ 13' 54''$ (LT) D = 3° 00' 00" R = 1,909.86' T = 70.56' L = 141.06' E = 1.30' e = ---- TR = ---- SE RUN = ---- PC STA = 23+56.21 PT STA = 24+97.27	EX CURVE RAMP-K-1 PI STA = 18+40.66 $\Delta = 8^\circ 00' 00''$ (LT) D = 8° 00' 00" R = 716.20' T = 50.08' L = 100.00' E = 1.75' e = ---- TR = ---- SE RUN = ---- PC STA = 17+90.58 PT STA = 18+90.58	EX CURVE RAMP-K-2 PI STA = 22+62.79 $\Delta = 27^\circ 05' 19''$ (RT) D = 8° 00' 00" R = 716.20' T = 172.53' L = 338.61' E = 20.49' e = ---- TR = ---- SE RUN = ---- PC STA = 20+90.26 PT STA = 24+28.87
--	--	---	--	--	---

EX CURVE EX171CL PI STA = 74+77.72 $\Delta = 31^\circ 12' 18''$ (RT) D = 3° 30' 00" R = 1,637.02' T = 457.14' L = 891.57' E = 62.63' e = ---- TR = ---- SE RUN = ---- PC STA = 70+20.58 PT STA = 79+12.15	EX CURVE EX171CL-1 PI STA = 81+95.77 $\Delta = 22^\circ 24' 00''$ (RT) D = 4° 00' 00" R = 1,432.39' T = 283.62' L = 560.00' E = 27.81' e = ---- TR = ---- SE RUN = ---- PC STA = 79+12.15 PT STA = 84+72.15	EX CURVE EX171CL-2 PI STA = 84+94.65 $\Delta = 1^\circ 48' 00''$ (RT) D = 4° 00' 00" R = 1,432.39' T = 22.50' L = 45.00' E = 0.18' e = ---- TR = ---- SE RUN = ---- PC STA = 84+72.15 PT STA = 85+17.15	EX CURVE EX171CL-3 PI STA = 89+54.02 $\Delta = 8^\circ 43' 14''$ (RT) D = 1° 00' 00" R = 5,729.58' T = 436.87' L = 872.06' E = 16.63' e = ---- TR = ---- SE RUN = ---- PC STA = 85+17.15 PT STA = 93+89.20
--	--	--	---

*0102-683K, ETC&0507-635K)RS-1

FILE NAME = ...\\D160T38-sht-ADV-align-02.dgn	DESIGNED - AAF	REVISED -		STATE OF ILLINOIS DEPARTMENT OF TRANSPORTATION	ALIGNMENT PLAN			F.A.P. RTE. 372	SECTION .	COUNTY COOK	TOTAL SHEETS 40	SHEET NO. 13
USER NAME = tblank	DRAWN - TMB	REVISED -						CONTRACT NO. 60T38				
PLOT DATE = 3/22/2012	CHECKED - JMM	REVISED -			SCALE: 1"=100' SHEET NO. 1 OF 2 SHEETS STA. 67+17.30 TO STA. 95+00.00				ILLINOIS FED. AID PROJECT			
	DATE - 3/23/2012	REVISED -										