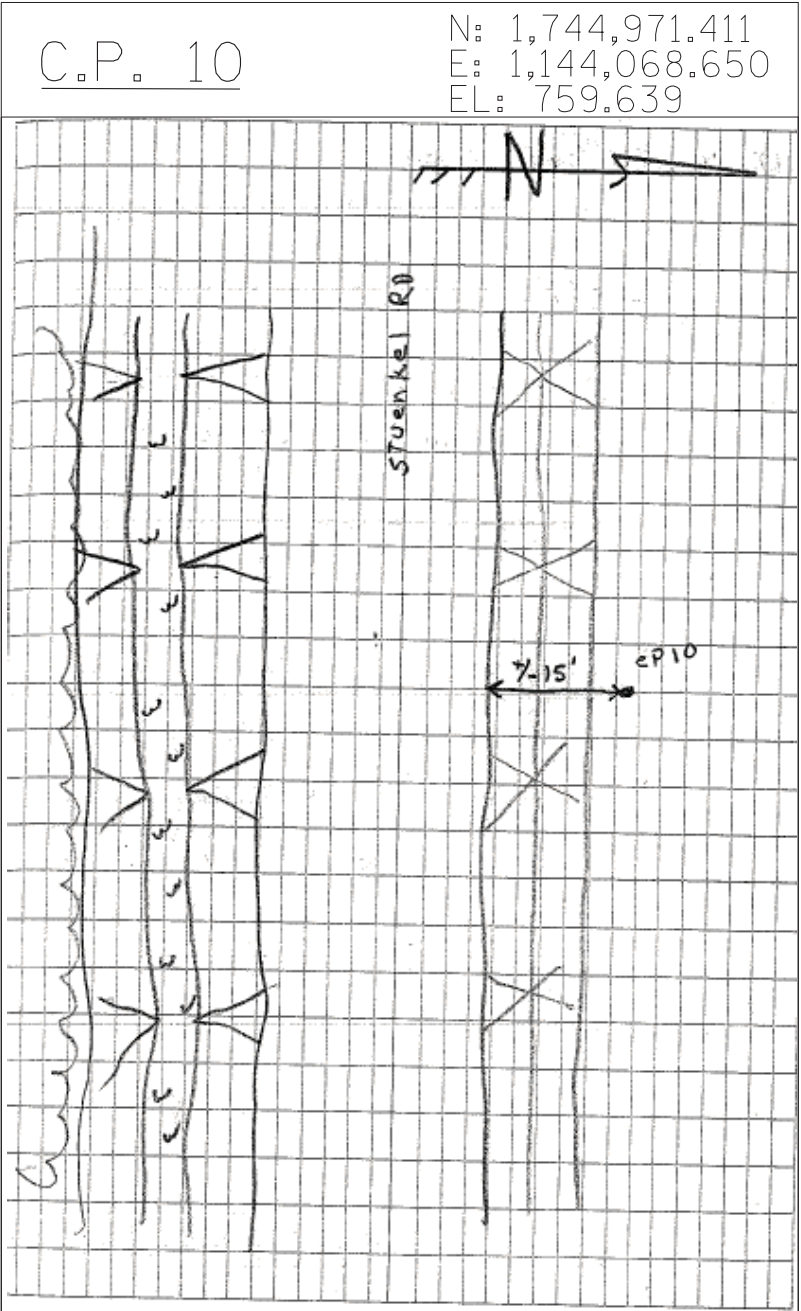
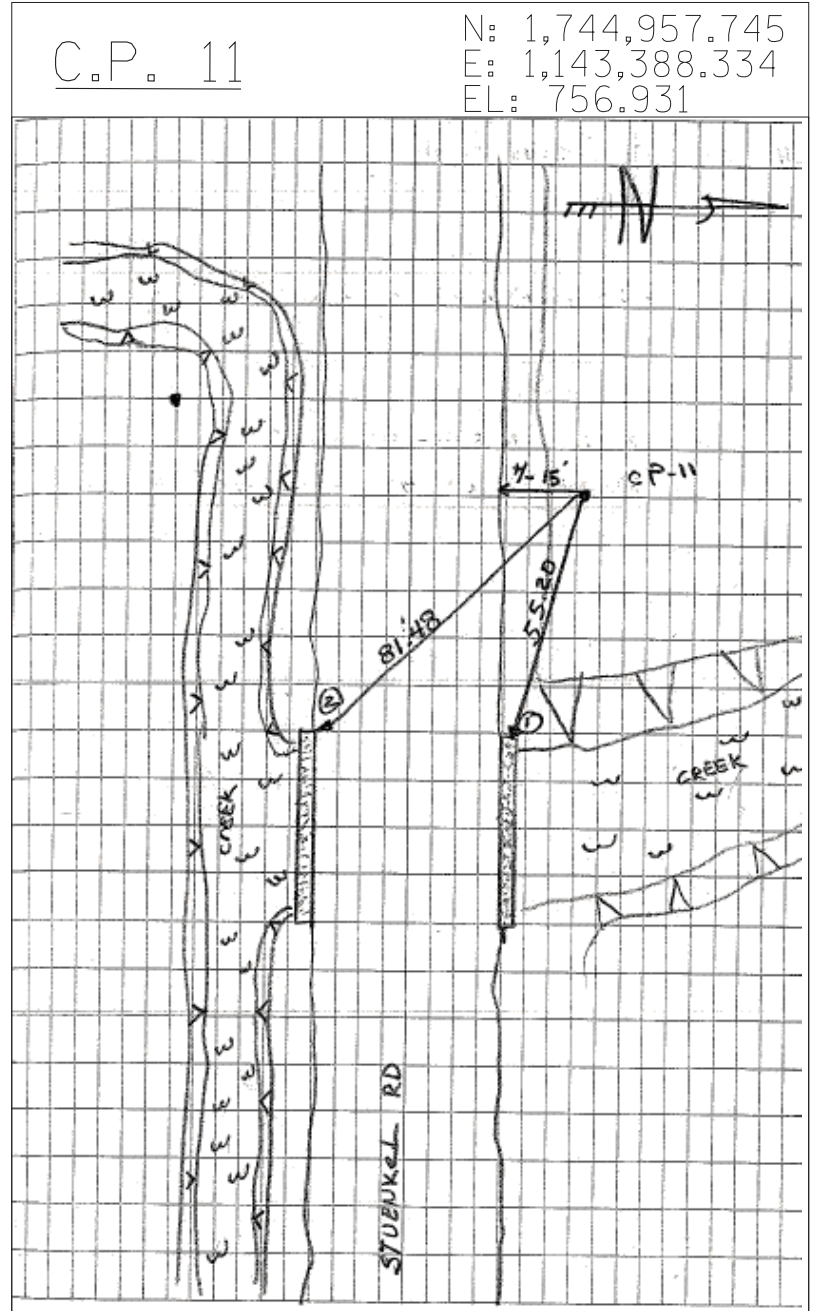


CPT 1 BRASS MON (SECTION COR)
TIE 1 NW FACE OF STREET LIGHT @ SEX.
STUENKEL & CENTRAL



CPT 10 IR W/ CENTER PUNCH
UNTIEABLE
+/- 500 WEST OF CP1
+/- 15' NORTH OF GRAVEL RD EDGE



CPT 11 IR W/ CENTER PUNCH
+/- 15' NORTH OF EDGE OF GRAVEL RD.
TIE 1: 55.20 NWX OF HEAD WALL
ON N. SIDE OF STUENKEL RD
TIE 2: 81.48 NWX OF HEAD WALL
ON S. SIDE OF STUENKEL RD

| | | | |
|----------------------------|-----------------------|------------------|-----------|
| TYLIN INTERNATIONAL | USER NAME = *USER* | DESIGNED - BES | REVISED - |
| | | DRAWN - BES | REVISED - |
| | PLOT SCALE = *SCALE* | CHECKED - JPM | REVISED - |
| | PLOT DATE = 3/29/2012 | DATE - 3/30/2012 | REVISED - |

**STATE OF ILLINOIS
DEPARTMENT OF TRANSPORTATION**

| | | | |
|--|-------------------------|------|---------|
| STUENKEL ROAD BRIDGE OVER I-57 SURVEY TIES FOR CONTROL POINTS | | | |
| SCALE: N.T.S. | SHEET NO. 1 OF 5 SHEETS | STA. | TO STA. |

| | | | | |
|---------------------|----------|--------|---------------------------|-----------|
| F.A. RTE. | SECTION | COUNTY | TOTAL SHEETS | SHEET NO. |
| 57 | 99-1HB-R | WILL | 63 | 10 |
| FED. ROAD DIST. NO. | | | ILLINOIS FED. AID PROJECT | |
| | | | CONTRACT NO. 60T40 | |