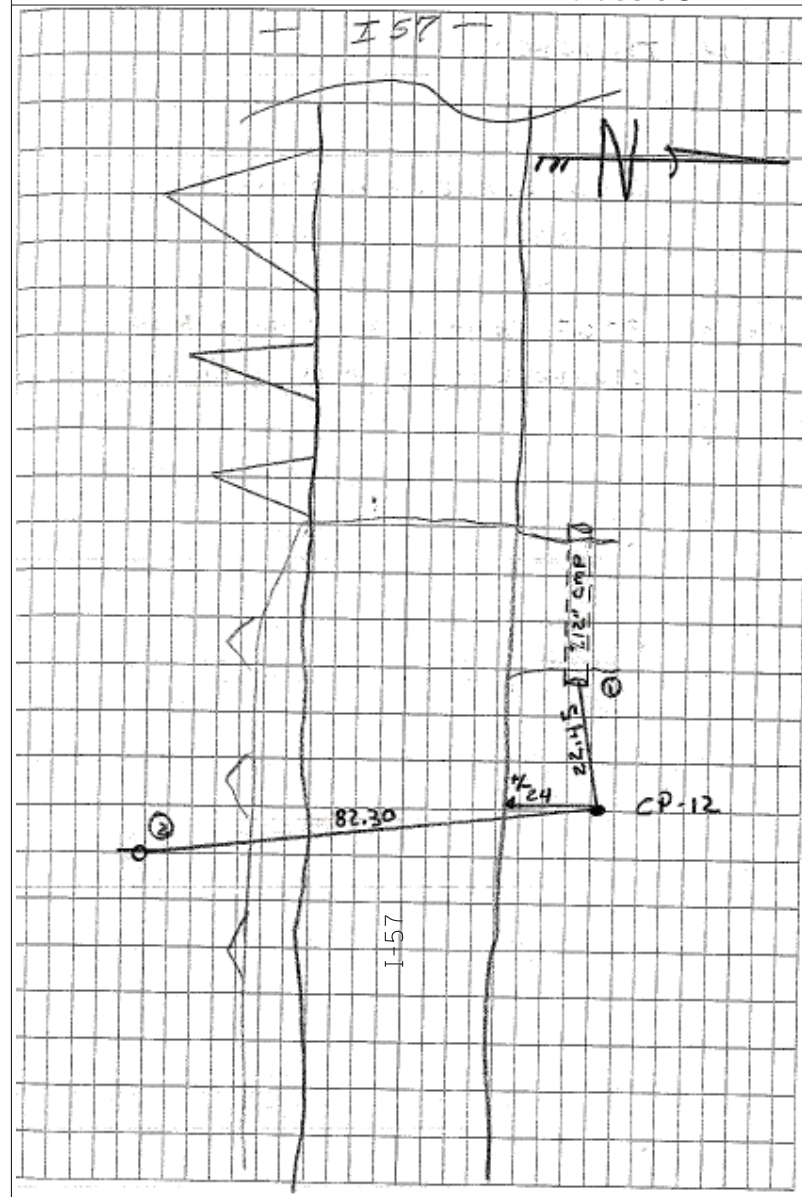


C.P. 12

N: 1,744,954.627
E: 1,142,729.124
EL: 760.595



CPT 12 IR W/ CENTER PUNCH

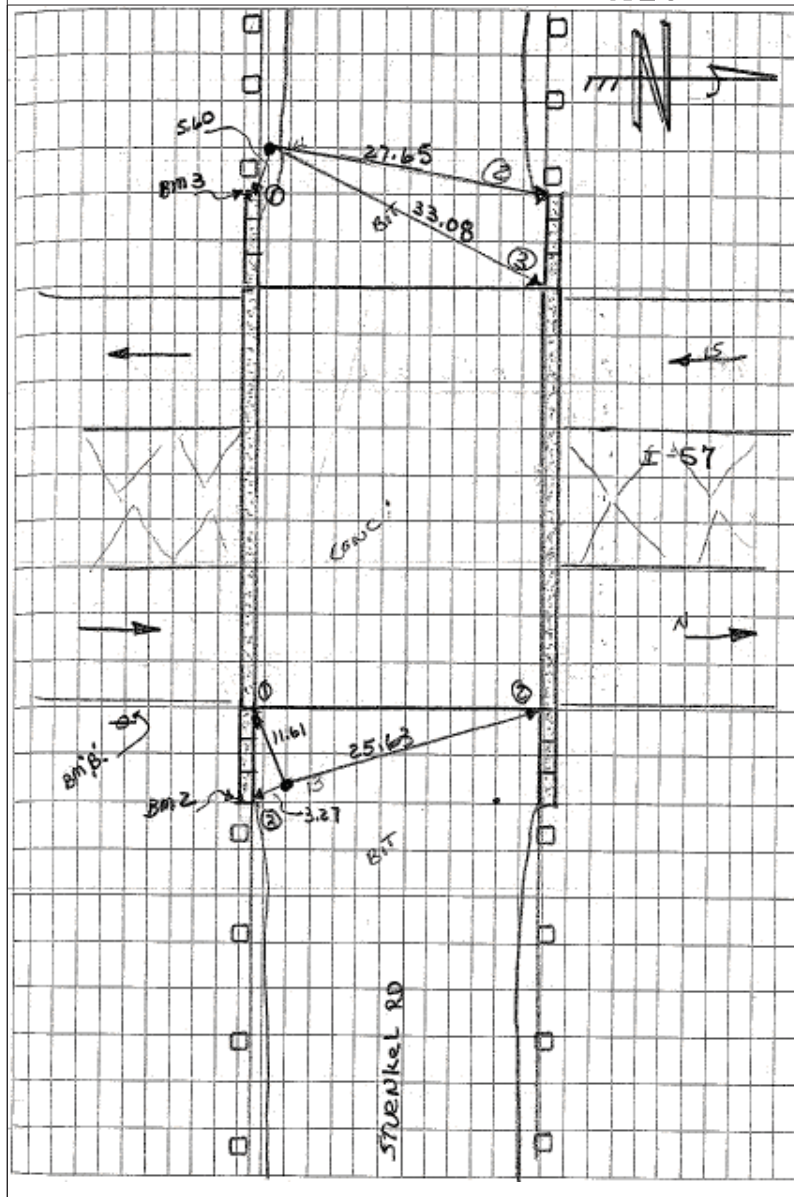
TIE 1 22.45 E. END OF +/- 12" CMP ON N. SIDE STUENKEL RD

TIE 2 82.30 N. FACE OF PP ON S. SIDE STUENKEL RD 4TH POLE E. OF I-57

+/- 24' N. OF EDGE OF GRAVEL RD

C.P. 14

N: 1,744,889.540
E: 1,141,976.263
EL: 777.128



CPT 14 FOUND IRC

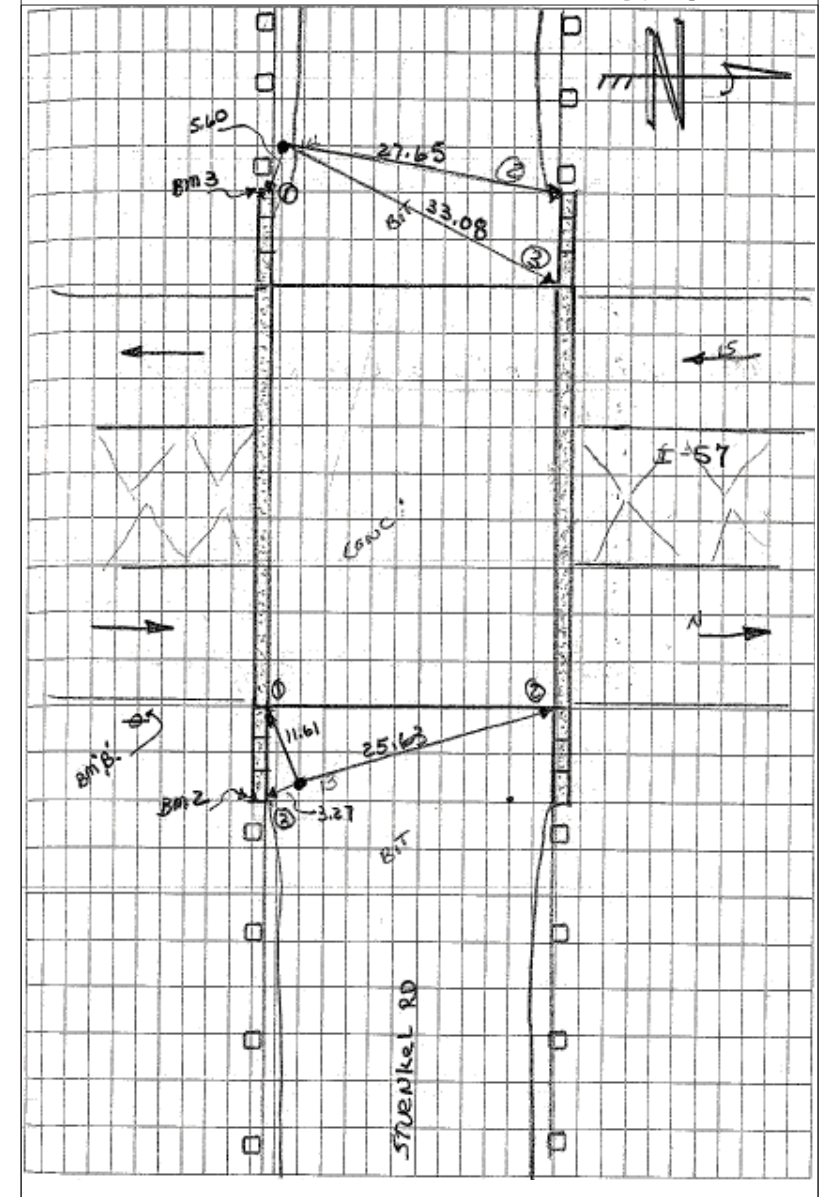
TIE 1 5.60 NWX OF RET WALL ON S. SIDE STUENKEL RD (E. END OF BRIDGE OVER I-57)

TIE 2 27.65 NWX OF RET WALL ON N. SIDE STUENKEL RD. (E. END OF BRIDGE OVER I-57)

TIE 3 33.08 NWX OF BRIDGE DECK

C.P. 13

N: 1,744,895.178
E: 1,142,227.294
EL: 777.643



CPT 13 PKN IN BIT PAV

TIE 1 11.61 SEX OF BRIDGE DECK

TIE 2 25.63 NEX OF BRIDGE DECK

TIE 3 3.27 NEX OF RET WALL ON S. SIDE STUENKEL RD (W. END OF BRIDGE OVER I-57)

TYLIN INTERNATIONAL

USER NAME = *USER*	DESIGNED - BES	REVISED -
PLOT SCALE = *SCALE*	DRAWN - BES	REVISED -
PLOT DATE = 3/29/2012	CHECKED - JPM	REVISED -
	DATE - 3/30/2012	REVISED -

STATE OF ILLINOIS
DEPARTMENT OF TRANSPORTATION

STUENKEL ROAD BRIDGE OVER I-57
SURVEY TIES FOR CONTROL POINTS

SCALE: N.T.S. SHEET NO. 2 OF 5 SHEETS STA. TO STA.

F.A. RTE.	SECTION	COUNTY	TOTAL SHEETS	SHEET NO.
57	99-1HB-R	WILL	63	11
FED. ROAD DIST. NO.			ILLINOIS FED. AID PROJECT	
			CONTRACT NO. 60T40	