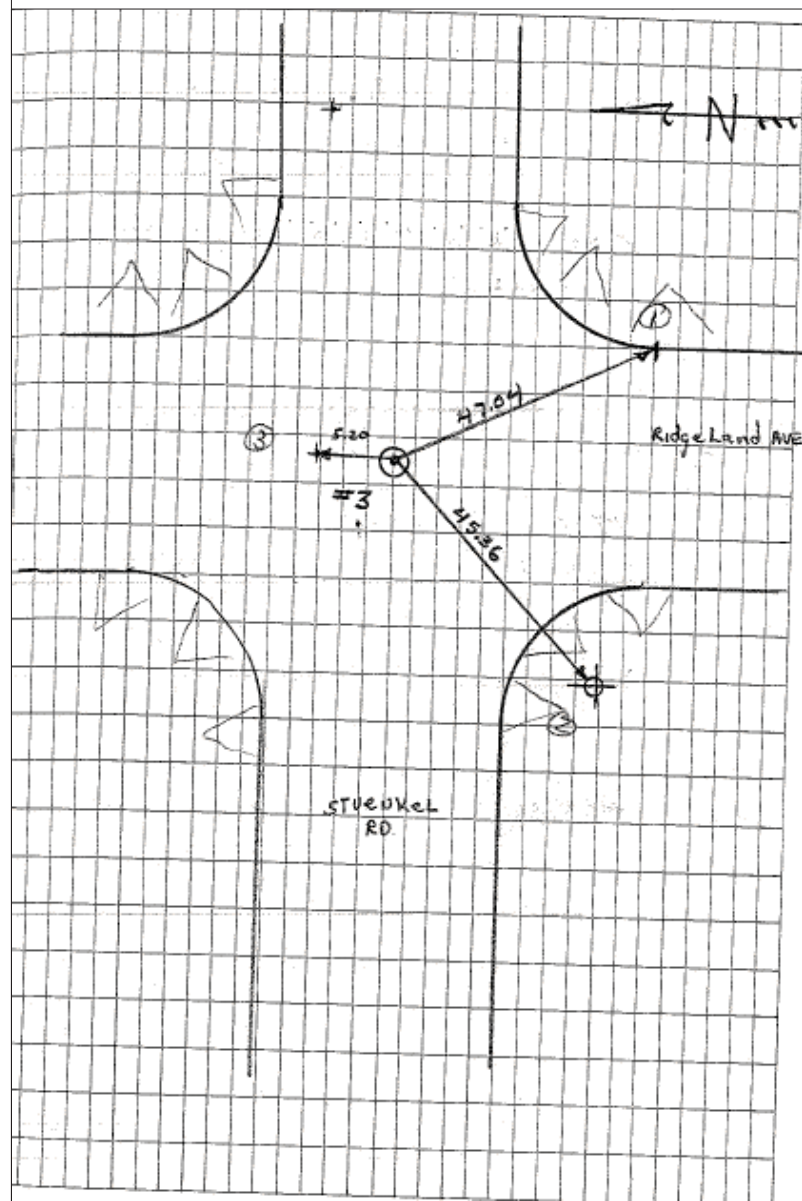


C.P. 3

N: 1,744,850.105  
E: 1,139,395.977



CPT 3 RRS 0.60 BELOW PAV. @ STUENKEL & RIDGELAND

TIE 1 47.04 PK NAIL @ PC @ SEX OF RIDGELAND & STUENKEL RD

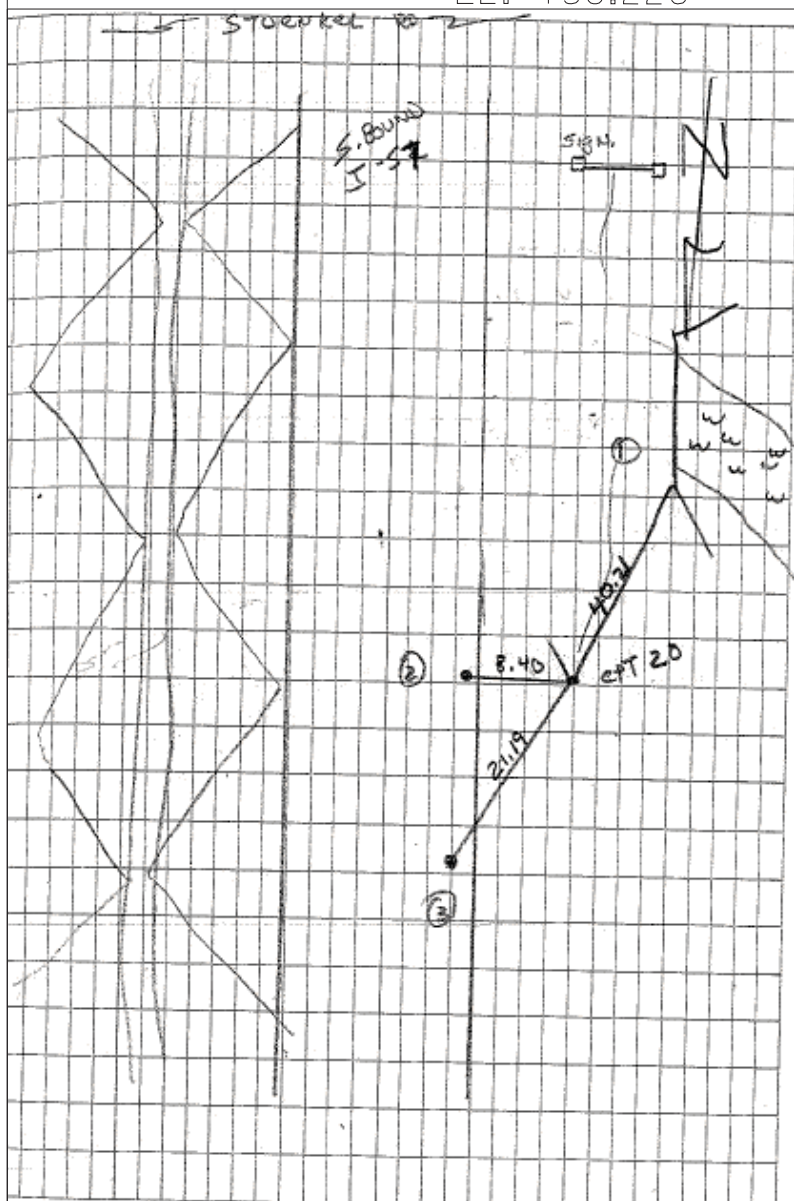
TIE 2 45.36 TO RRS IN W. FACE OF PP @ SWX RIDGELAND & STUENKEL RD

TIE 3 MAG NAIL 5.20 N. OF RRS



C.P. 20

N: 1,745,818.895  
E: 1,142,195.504  
EL: 758.226



CPT 20 IRC

TIE 1 NEX OF HEAD WALL ON W. SIDE OF S. BOUND LANE OF I-57 (40.21)

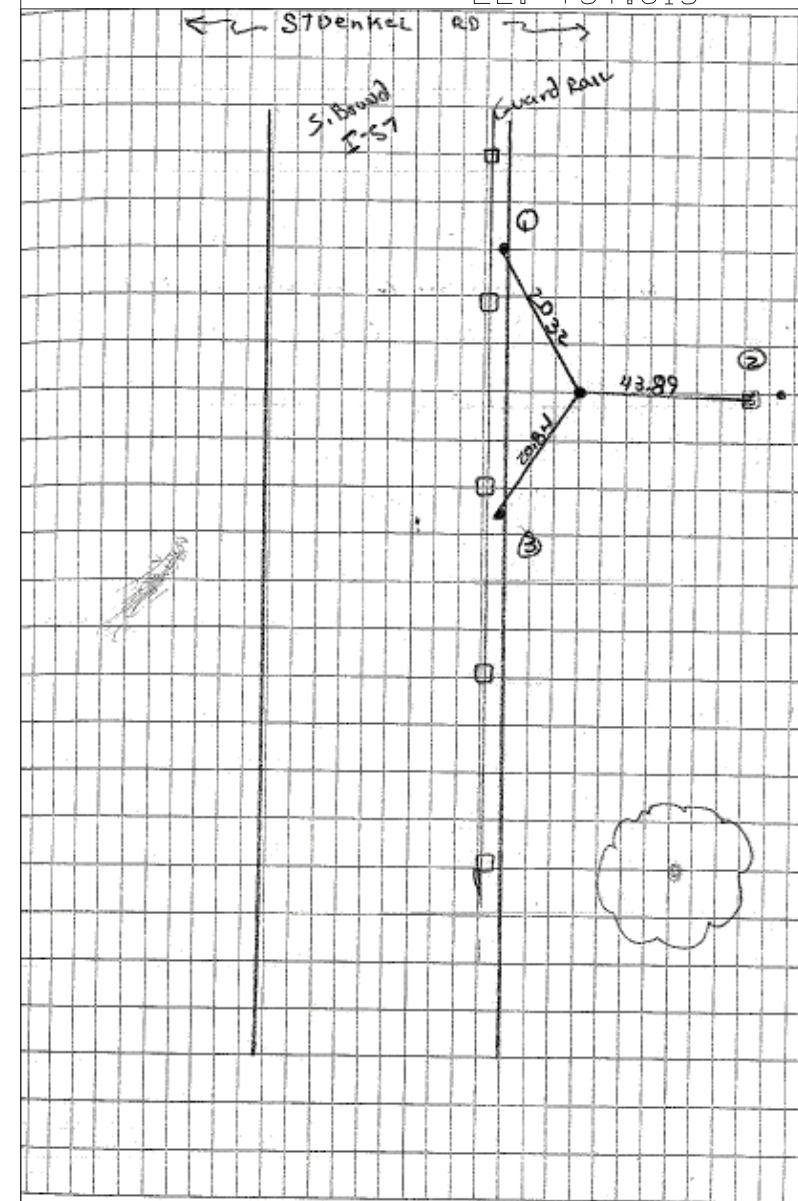
TIE 2 8.40 PK NAIL E ON W EDGE OF S. BOUND LANE

TIE 3 21.19 PK NAIL ON W. EDGE OF S. BOUND LANE



C.P. 18

N: 1,745,204.500  
E: 1,142,079.993  
EL: 757.615



CPT 18 IR W/ CENTER PUNCH

TIE 1 20.32 MAG NAIL W. EDGE OF PAV. W. SIDE OF GUARD RAIL S. BOUND LANE OF I-57 N. OF STUENKEL RD

TIE 2 43.89 TOP CENTER OF CONE ROW MARKER

TIE 3 20.84 MAG NAIL W. EDGE OF PAV. W. SIDE OF GUARD RAIL S. BOUND LANE.

TYLIN INTERNATIONAL

USER NAME = *USER*	DESIGNED - BES	REVISED -
	DRAWN - BES	REVISED -
PLOT SCALE = *SCALE*	CHECKED - JPM	REVISED -
PLOT DATE = 3/29/2012	DATE - 3/30/2012	REVISED -

STATE OF ILLINOIS  
DEPARTMENT OF TRANSPORTATION

STUENKEL ROAD BRIDGE OVER I-57  
SURVEY TIES FOR CONTROL POINTS

SCALE: N.T.S. SHEET NO. 4 OF 5 SHEETS STA. TO STA.

F.A. RTE.	SECTION	COUNTY	TOTAL SHEETS	SHEET NO.
57	99-1HB-R	WILL	63	13
FED. ROAD DIST. NO.			ILLINOIS FED. AID PROJECT	
			CONTRACT NO. 60T40	