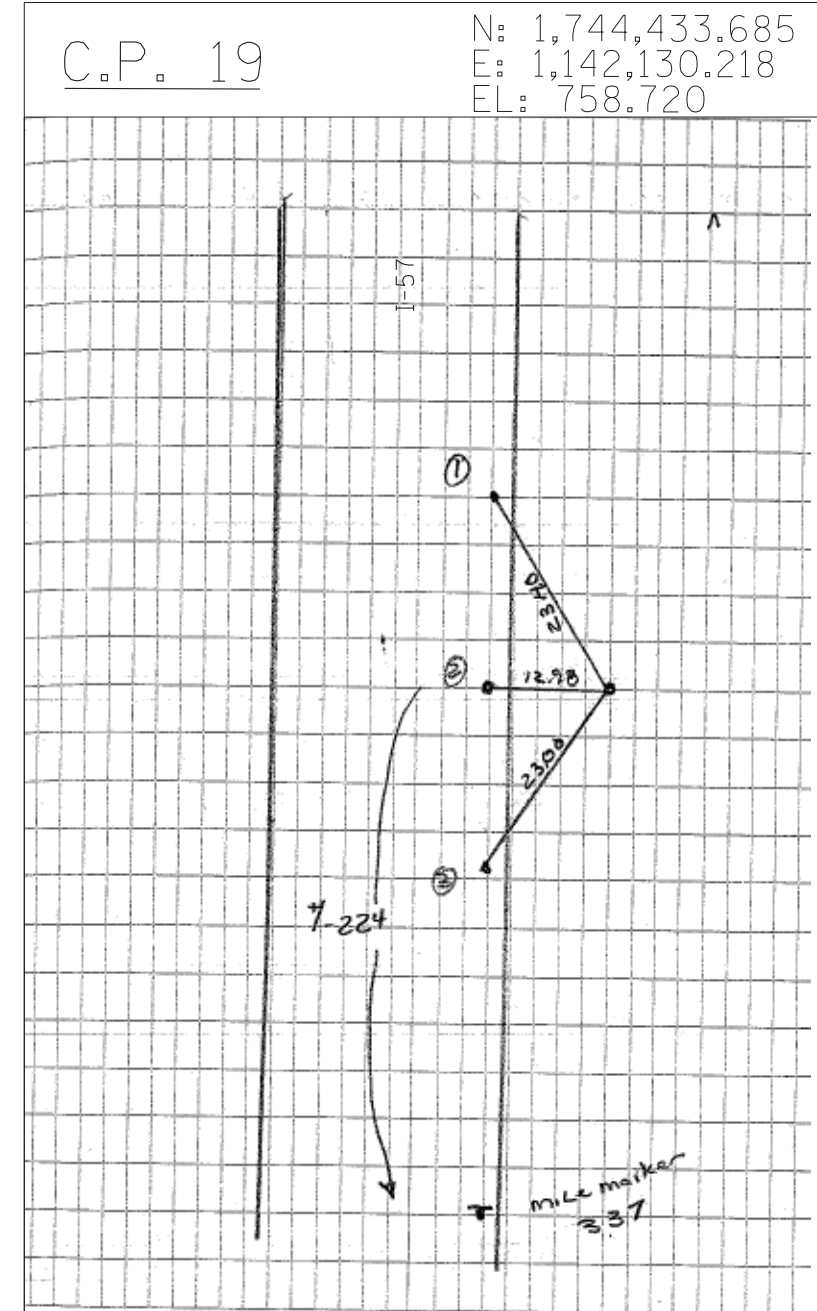


CPT 21 IRC +/- 275 S. OF MILE MARKER 337
ON E. SIDE N. BOUND LANES I-57

TIE 1 21.51 PK NAIL N. ON EDGE OF PAV.
N. BOUND LANES I-57

TIE 2 6.75 W. PK NAIL N. EDGE OF PAV.
N. BOUND LANES I-57

TIE 3 21.28 PK NAIL. N. ON EDGE OF
PAV. N. BOUND LANES I-57



CPT 19 IR W/ CENTER PUNCH +/- 224 N OF MILE MARKER
337

TIE 1 2340 PK

TIE 2 12.98 PK

TIE 3 23.00 PK

TYLIN INTERNATIONAL	USER NAME = *USER*	DESIGNED - BES	REVISED -
		DRAWN - BES	REVISED -
	PLOT SCALE = *SCALE*	CHECKED - JPM	REVISED -
	PLOT DATE = 3/29/2012	DATE - 3/30/2012	REVISED -

STATE OF ILLINOIS
DEPARTMENT OF TRANSPORTATION

STUENKEL ROAD BRIDGE OVER I-57 SURVEY TIES FOR CONTROL POINTS			
SCALE: N.T.S.	SHEET NO. 5 OF 5 SHEETS	STA.	TO STA.

F.A. RTE.	SECTION	COUNTY	TOTAL SHEETS	SHEET NO.
57	99-1HB-R	WILL	63	14
FED. ROAD DIST. NO.			ILLINOIS FED. AID PROJECT	
			CONTRACT NO. 60T40	