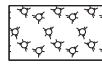


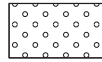
LEGEND:



MULCH (METHOD 4) AND TEMPORARY EROSION CONTROL SEEDING*

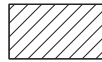


SEDIMENT CONTROL, SILT FENCE



POSTCONSTRUCTION ONLY LANDSCAPING:

EROSION CONTROL BLANKET, SEEDING, CLASS 2A (SALT TOLERANT ROADSIDE MIXTURE), NITROGEN, PHOSPHORUS, AND POTASSIUM FERTILIZER NUTRIENTS, TOPSOIL FURNISH AND PLACE, 4".



STABILIZED CONSTRUCTION ENTRANCE



TEMPORARY DITCH CHECK

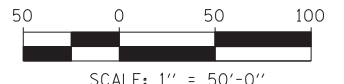
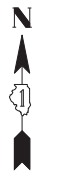
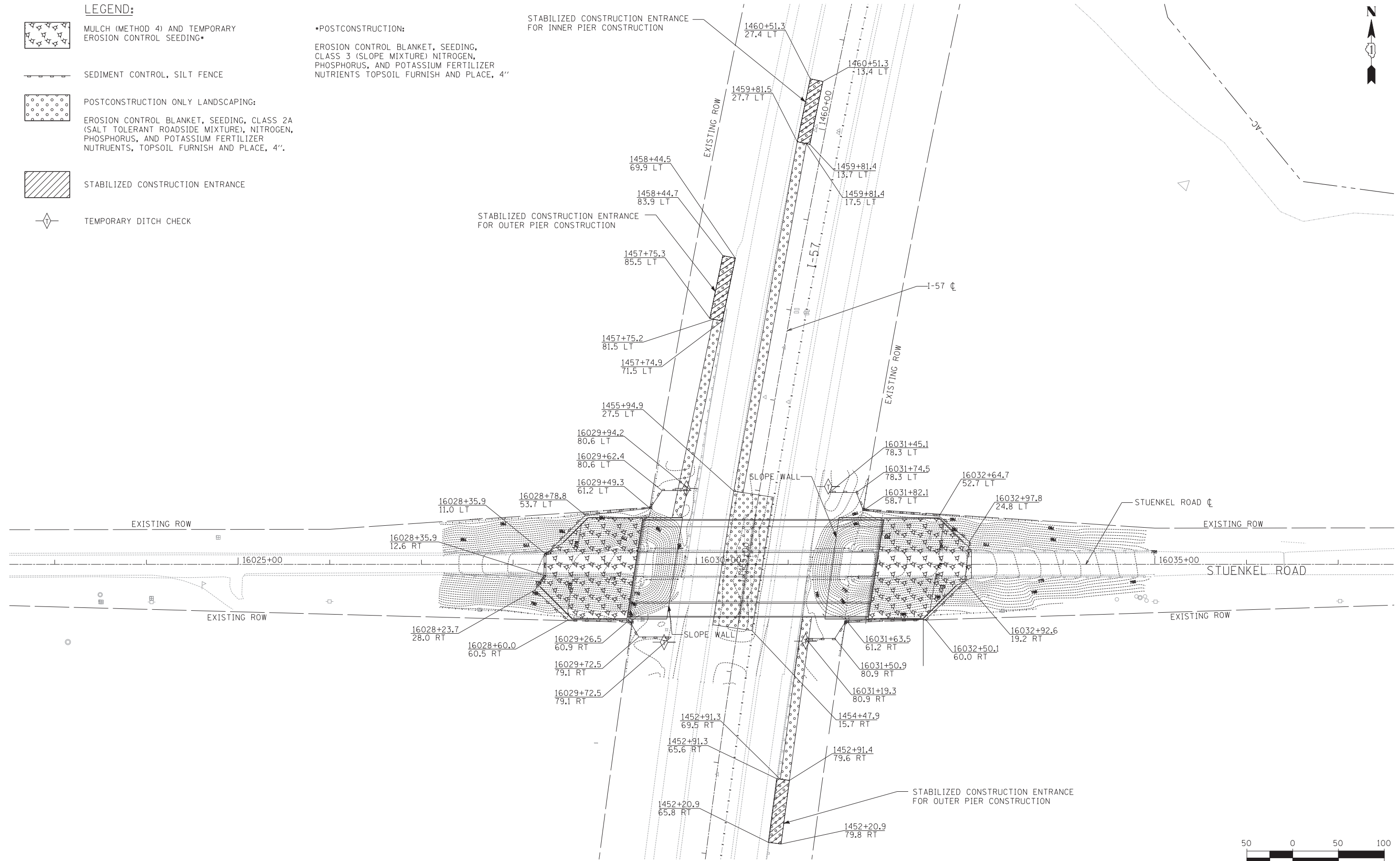
***POSTCONSTRUCTION:**

EROSION CONTROL BLANKET, SEEDING, CLASS 3 (SLOPE MIXTURE) NITROGEN, PHOSPHORUS, AND POTASSIUM FERTILIZER NUTRIENTS TOPSOIL FURNISH AND PLACE, 4"

STABILIZED CONSTRUCTION ENTRANCE FOR INNER PIER CONSTRUCTION

STABILIZED CONSTRUCTION ENTRANCE FOR OUTER PIER CONSTRUCTION

STABILIZED CONSTRUCTION ENTRANCE FOR OUTER PIER CONSTRUCTION



TYLIN INTERNATIONAL

USER NAME = *USER*	DESIGNED - JDU	REVISED -
	DRAWN - JDU	REVISED -
PLOT SCALE = *SCALE*	CHECKED - JPM	REVISED -
PLOT DATE = 3/29/2012	DATE - 3/30/2012	REVISED -

**STATE OF ILLINOIS
DEPARTMENT OF TRANSPORTATION**

**STUENKEL ROAD BRIDGE OVER I-57
EROSION CONTROL AND LANDSCAPING PLAN**

SCALE: 1"=50' SHEET NO. 1 OF 1 SHEETS STA. 16022+50 TO STA. 16037+50

F.A. RTE.	SECTION	COUNTY	TOTAL SHEETS	SHEET NO.
57	99-1HB-R	WILL	63	22
CONTRACT NO. 60T40				
FED. ROAD DIST. NO.		ILLINOIS FED. AID PROJECT		