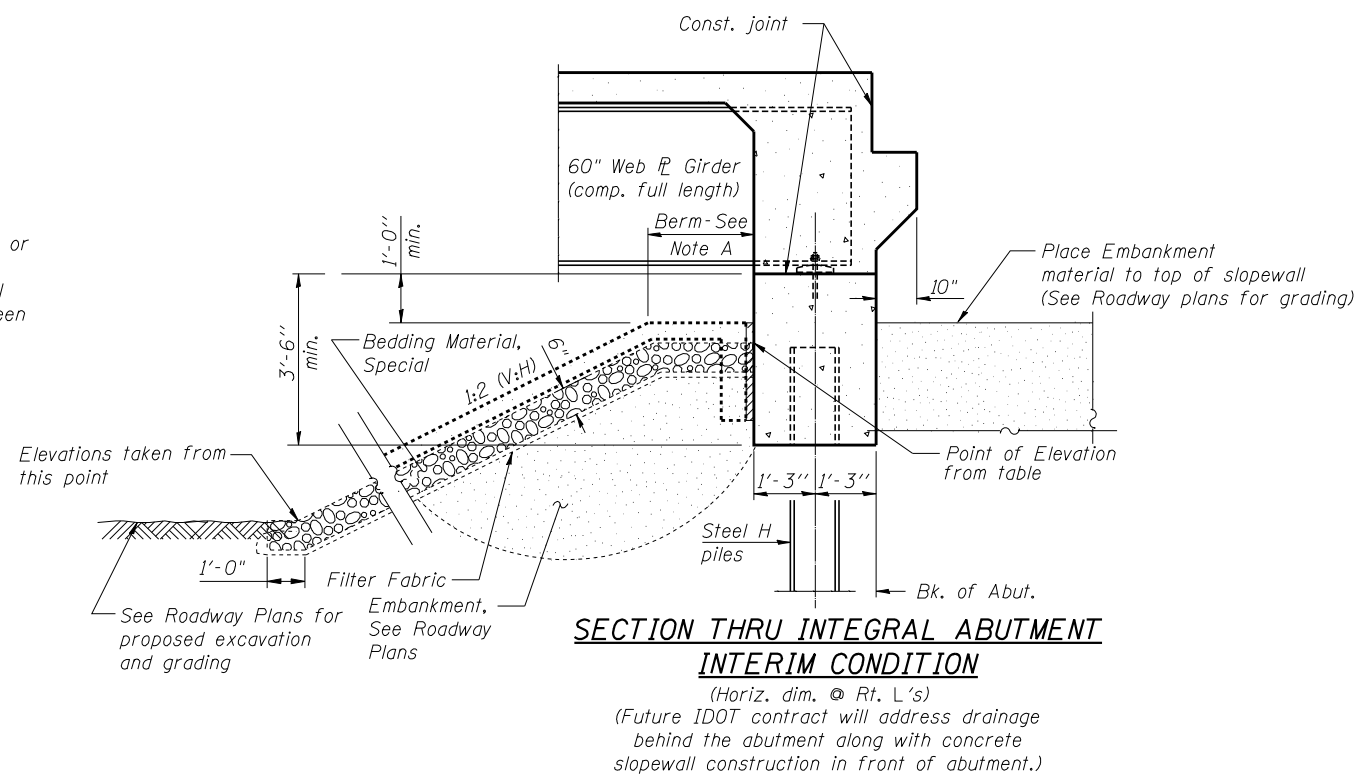


**GENERAL NOTES:**

- Fasteners shall be ASTM A325 Type 1, mechanically galvanized bolts. Bolts  $\frac{7}{8}$ -in.  $\phi$ , holes  $\frac{15}{16}$ -in.  $\phi$ , unless otherwise noted.
- Calculated weight of Structural Steel =  
Grade 50 = 1,064,700 lbs  
Grade 36 = 66,310 lbs
- No field welding is permitted except as specified in the contract documents.
- Reinforcement bars designated (E) shall be epoxy coated.
- If the Contractor elects to use cantilever forming brackets on the exterior beams or girders, the brackets shall be placed at the same locations as required for the hardwood blocks in Article 503.06(b) of the Standard Specifications. If additional cantilever forming brackets are required, hardwood blocking shall be wedged between the exterior and first interior beam at each of these additional bracket locations.
- Bearing seat surfaces shall be constructed or adjusted to the designated elevations within a tolerance of  $\frac{1}{8}$  inch (0.01 ft.). Adjustment shall be made either by grinding the surface or by shimming the bearings.
- The existing structural steel coating contains lead. The Contractor shall take appropriate precautions to deal with the presence of lead on this project.
- The Organic Zinc Rich Primer / Epoxy / Urethane Paint System shall be used for painting of new structural steel except where otherwise noted. The entire system shall be shop applied, with the exception of the exterior surface and the bottom of the bottom flange of fascia beams, masked off connection surfaces, field installed fasteners and damaged areas shall be touched up in the field. The color of the final finish coat for all interior steel surfaces shall be Gray, Munsell No. 5B 7/1. The color of the final finish coat for the exterior and bottom flange of the fascia beams shall be Interstate Green, Munsell No. 7.5G 4/8.
- The embankment configuration shown shall be the minimum that must be placed and compacted prior to construction of the abutments.
- Slipforming of the parapets is not allowed.

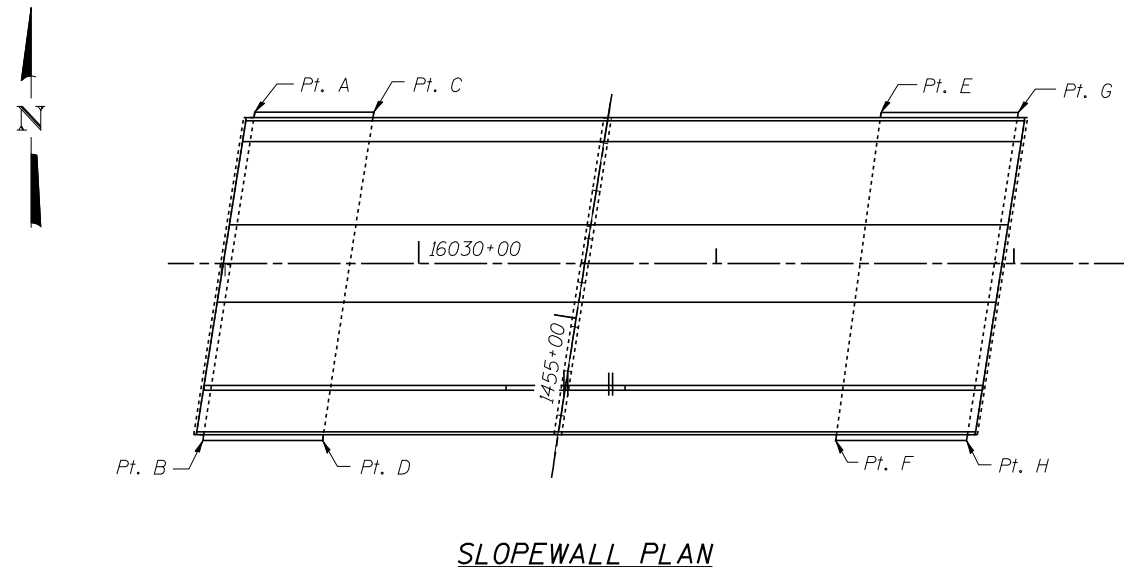


Note A:  
See Slopewall Elevations table to see if berm is applicable.

STATION 16030+55.78  
BUILT 2011 BY  
STATE OF ILLINOIS  
F.A.I. 57 SEC. 99-1HB-R  
LOADING HL-93  
STR. NO. 099-0526

**NAME PLATE**  
See Std. 515001

SLOPEWALL ELEVATIONS		
LOCATION	Elev.	Berm Width
Pt. A - Sta. 1455+51.34, Offset 117.56' Lt.	775.72	
Pt. B - Sta. 1454+40.53, Offset 117.78' Lt.	776.12	
Pt. C - Sta. 1455+57.65, Offset 78.09' Lt.	759.00	
Pt. D - Sta. 1454+46.45, Offset 78.24' Lt.	759.40	
Pt. E - Sta. 1455+85.03, Offset 90.23' Rt.	757.10	
Pt. F - Sta. 1454+72.51, Offset 92.36' Rt.	757.20	
Pt. G - Sta. 1455+92.59, Offset 135.80' Rt.	776.13	1'-8"
Pt. H - Sta. 1454+79.29, Offset 135.97' Rt.	776.05	



**TOTAL BILL OF MATERIAL**

ITEM	UNIT	SUPER	SUB	TOTAL
Filter Fabric	Sq Yd	-	1,167	1,167
Removal of Existing Structures	Each	-	-	1
Protective Shield	Sq Yd	449	-	449
Structure Excavation	Cu Yd	-	485	485
Concrete Structures	Cu Yd	-	349.6	349.6
Concrete Superstructure	Cu Yd	1,056.0	-	1,056.0
Bridge Deck Grooving	Sq Yd	1,862	-	1,862
Concrete Encasement	Cu Yd	-	25.1	25.1
Protective Coat	Sq Yd	3,541	-	3,541
Furnishing and Erecting Structural Steel	L Sum	1	-	1
Stud Shear Connectors	Each	10,088	-	10,088
Reinforcement Bars, Epoxy Coated	Pound	259,990	55,720	315,710
Bar Splicers	Each	216	144	360
Bridge Fence Railing (Sidewalk)	Foot	260	-	260
Bridge Fence Railing	Foot	261	-	261
Parapet Railing	Foot	261	-	261
Furnishing Steel Piles HP14x73	Foot	-	6,308	6,308
Driving Piles	Foot	-	6,308	6,308
Test Pile Steel HP14x73	Each	-	3	3
Name Plates	Each	-	1	1
Anchor Bolts, 1"	Each	-	52	52
Anchor Bolts, 1 1/2"	Each	-	52	52
High Load Multi-Rotational Bearings, Guided Expansion, 550K	Each	13	-	13
Drainage Scuppers, DS-11	Each	10	-	10
Drainage System	L Sum	1	-	1
Silicone Joint Sealer, 1"	Foot	262	-	262
Bedding Material, Special	Cu Yd	-	196	196
Temporary Soil Retention System	Sq Ft	-	7,633	7,633

**INDEX OF SHEETS**

- General Plan and Elevation (Interim Condition)
- General Plan and Elevation (Final Condition)
- General Notes, Index of Sheets & Bill of Material
- Top of Slab Elevations - Layout
- Top of Slab Elevations - 1
- Top of Slab Elevations - 2
- Top of Slab Elevations - 3
- Superstructure
- Superstructure Details - 1
- Superstructure Details - 2
- Superstructure Details - 3
- Parapet Elevations
- Bridge Fence Railing, Sidewalk Mounted
- Bridge Fence Railing, Parapet Mounted
- Drainage Scupper, DS-11
- Drainage System
- Framing Plan
- Girder Elevations & Details
- Field Splice & Cross Frame Details
- Pier Bearing Details
- West Abutment
- East Abutment
- Pier - Westbound
- Pier - Eastbound
- Pier Details
- Temporary Soil Retention System - 1
- Temporary Soil Retention System - 2
- HP Pile Details
- Bar Splicer Assembly and Mechanical Splicer Details
- Boring Logs - 1
- Boring Logs - 2
- Boring Logs - 3
- Boring Logs - 4
- Boring Logs - 5
- Boring Logs - 6

<b>TYLIN INTERNATIONAL</b>	USER NAME =	DESIGNED - PK	REVISED -
		CHECKED - SP	REVISED -
	PLOT SCALE =	DRAWN - PK	REVISED -
	PLOT DATE =	CHECKED - SP	REVISED -

**STATE OF ILLINOIS  
DEPARTMENT OF TRANSPORTATION**

**GENERAL NOTES, INDEX OF SHEETS & BILL OF MATERIAL  
STRUCTURE NO. 099-0526**

SHEET NO. 3 OF 35 SHEETS

F.A.I. RTE.	SECTION	COUNTY	TOTAL SHEETS	SHEET NO.
57	99-1HB-R	WILL	63	25
CONTRACT NO. 60T40			ILLINOIS FED. AID PROJECT	