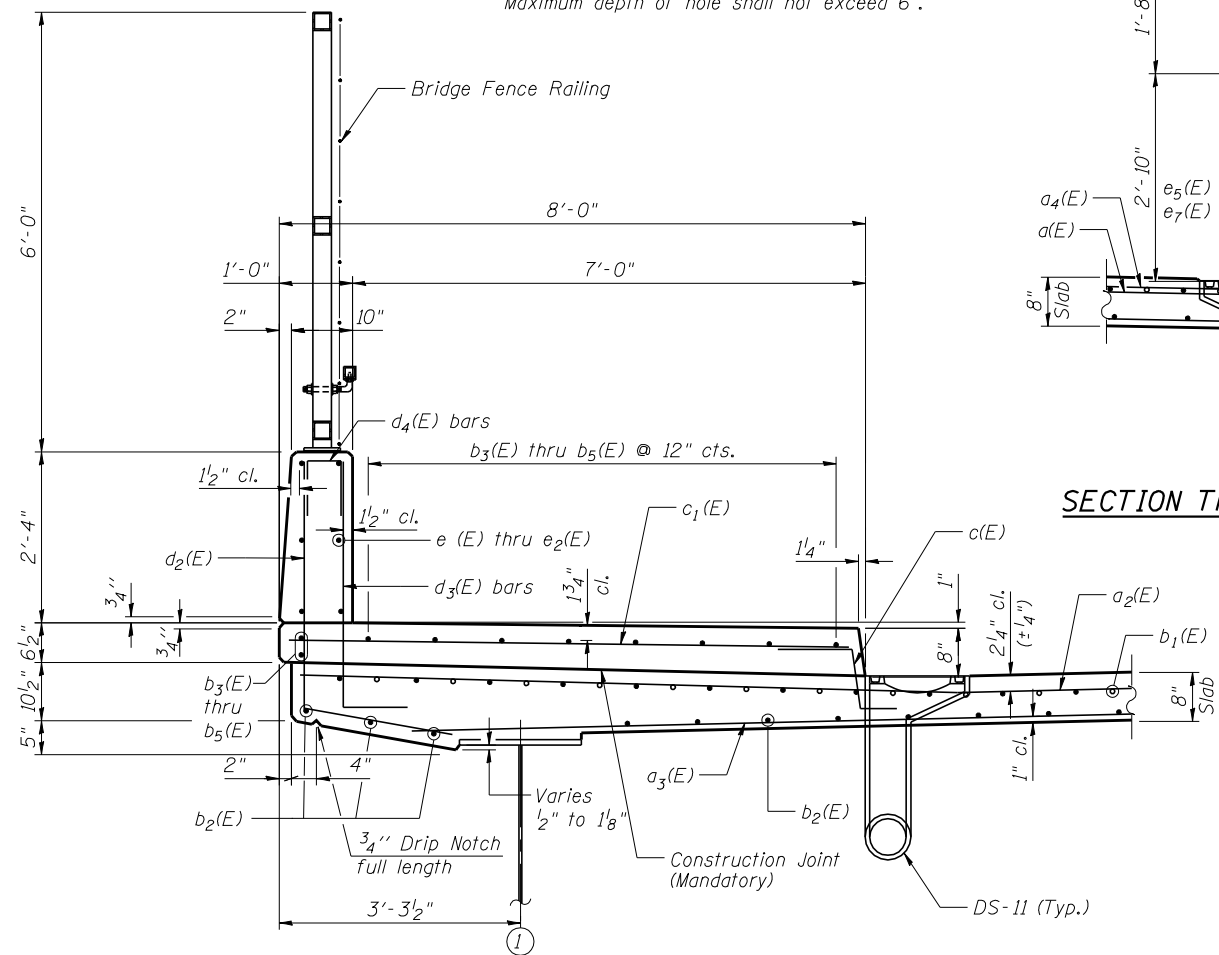
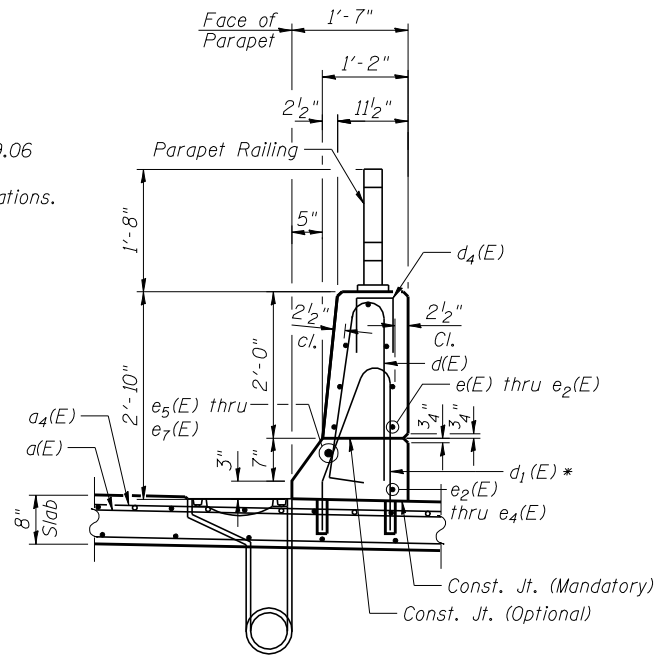


SECTION THRU MEDIAN
(Looking east)

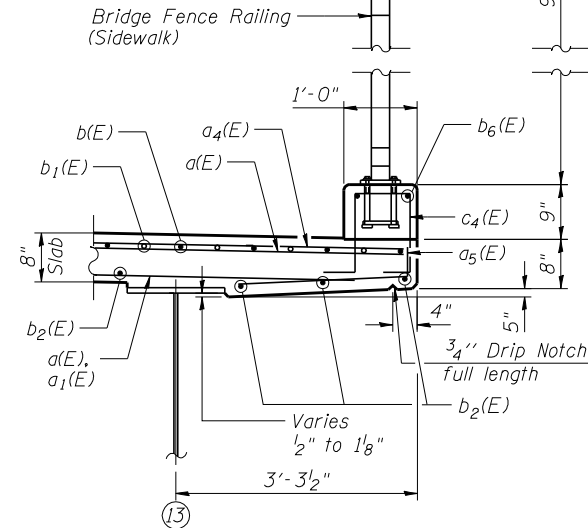
* Core and set #5 d₁(E) bar according to Article 509.06 of the Standard Specifications. Cored holes shall be roughened or scored per manufacturer's recommendations. Maximum depth of hole shall not exceed 6".



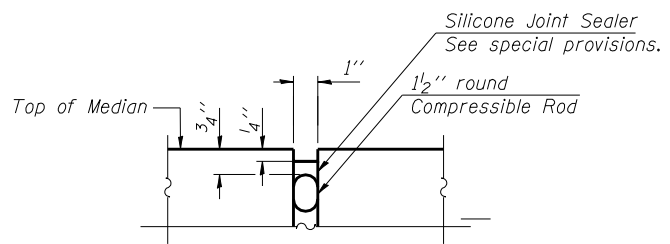
SECTION THRU NORTH PARAPET



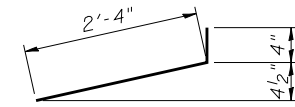
SECTION THRU SOUTH PARAPET



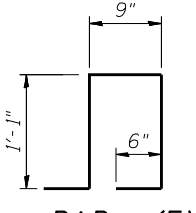
SECTION THRU SOUTH FASCIA



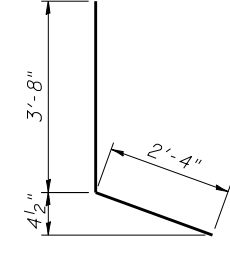
DETAIL A



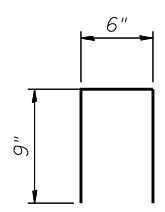
BAR a₅(E)



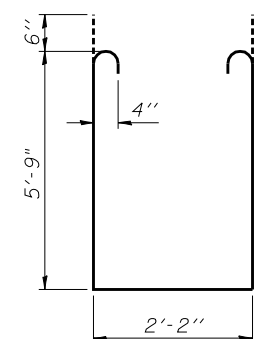
BAR c₄(E)



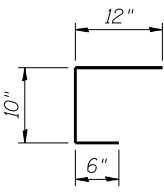
BAR d₂(E)



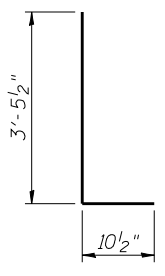
BAR d₄(E)



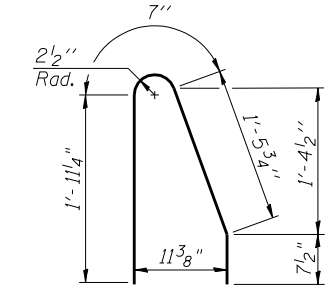
BAR s₁(E)



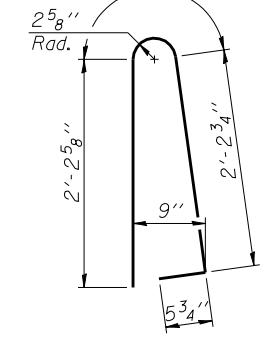
BAR c₃(E)



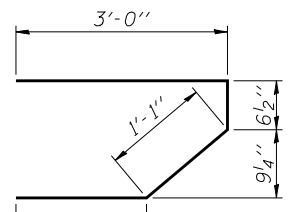
BAR d₃(E)



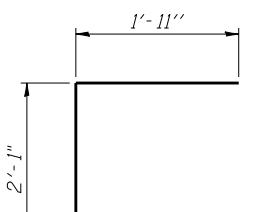
BAR d₁(E)



BAR d(E)



BAR s(E)



BAR v(E)

SUPERSTRUCTURE BILL OF MATERIAL

Bar	No.	Size	Length	Shape
a (E)	1170	#5	30'-3"	—
a ₁ (E)	1071	#5	21'-2"	—
a ₂ (E)	571	#5	48'-6"	—
a ₃ (E)	370	#5	48'-1"	—
a ₄ (E)	562	#6	21'-6"	—
a ₅ (E)	371	#5	2'-8"	—
a ₆ (E)	8	#5	30'-8"	—
a ₇ (E)	8	#5	26'-3"	—
a ₈ (E)	80	#5	1'-6"	—
a ₉ (E)	1138	#6	8'-4"	—
b (E)	972	#5	32'-0"	—
b ₁ (E)	318	#6	29'-3"	—
b ₂ (E)	816	#5	35'-7"	—
b ₃ (E)	152	#5	28'-3"	—
b ₄ (E)	76	#5	19'-8"	—
b ₅ (E)	152	#5	33'-0"	—
b ₆ (E)	18	#4	31'-5"	—
c (E)	786	#5	2'-4"	—
c ₁ (E)	262	#5	7'-8"	—
c ₂ (E)	524	#5	12'-8"	—
c ₃ (E)	524	#5	2'-4"	—
c ₄ (E)	316	#4	3'-11"	—
d (E)	286	#5	5'-7"	—
d ₁ (E)	286	#5	4'-8"	—
d ₂ (E)	262	#4	6'-0"	—
d ₃ (E)	262	#6	4'-4"	—
d ₄ (E)	112	#4	2'-0"	—
e (E)	78	#4	16'-7"	—
e ₁ (E)	91	#4	16'-10"	—
e ₂ (E)	28	#4	19'-8"	—
e ₃ (E)	3	#4	35'-1"	—
e ₄ (E)	4	#4	31'-6"	—
e ₅ (E)	3	#8	37'-2"	—
e ₆ (E)	4	#8	33'-11"	—
e ₇ (E)	2	#8	19'-8"	—
m (E)	20	#6	30'-8"	—
m ₁ (E)	44	#6	11'-10"	—
m ₂ (E)	22	#6	8'-1"	—
m ₃ (E)	4	#6	3'-0"	—
m ₄ (E)	20	#6	26'-4"	—
m ₅ (E)	2	#6	3'-9"	—
m ₆ (E)	2	#6	4'-0"	—
m ₇ (E)	4	#6	9'-10"	—
m ₈ (E)	4	#6	10'-1"	—
s (E)	228	#5	6'-10"	—
s ₁ (E)	204	#4	14'-8"	—
v (E)	216	#5	4'-0"	—
Reinforcement Bars, Epoxy Coated		Pound	259,990	
Concrete Superstructure		Cu. Yds.	1,056.0	

TYLIN INTERNATIONAL	USER NAME =	DESIGNED - PK	REVISED -
	PLOT SCALE =	CHECKED - SP	REVISED -
	PLOT DATE =	DRAWN - PK	REVISED -
		CHECKED - SP	REVISED -

STATE OF ILLINOIS
DEPARTMENT OF TRANSPORTATION

SUPERSTRUCTURE DETAILS - 2
STRUCTURE NO. 099-0526

SHEET NO. 10 OF 35 SHEETS

F.A.I. RTE.	SECTION	COUNTY	TOTAL SHEETS	SHEET NO.
57	99-1HB-R	WILL	63	32
CONTRACT NO. 60T40			ILLINOIS FED. AID PROJECT	