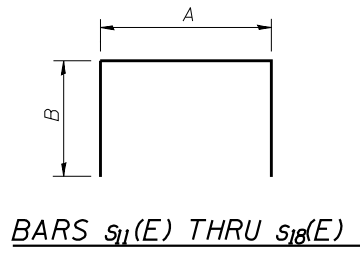
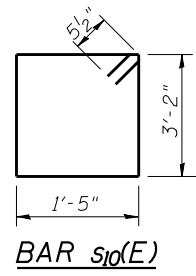


A & B DIMENSIONS

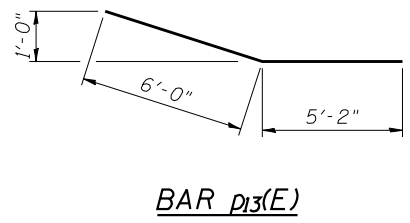
Bar	A	B
s11(E)	1'-5"	4'-2"
s12(E)	1'-5"	3'-3"
s13(E)	2'-2"	3'-2"
s14(E)	2'-8"	6'-9"
s15(E)	2'-8"	7'-4"
s16(E)	2'-7"	4'-5"
s17(E)	2'-2"	2'-0"
s18(E)	2'-2"	3'-8"



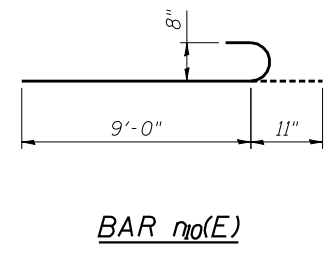
BARS s11(E) THRU s18(E)



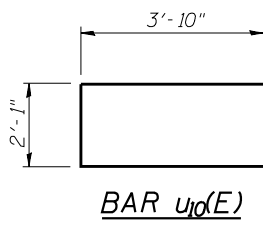
BAR s10(E)



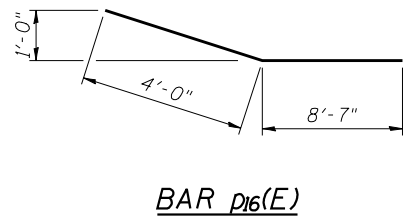
BAR p13(E)



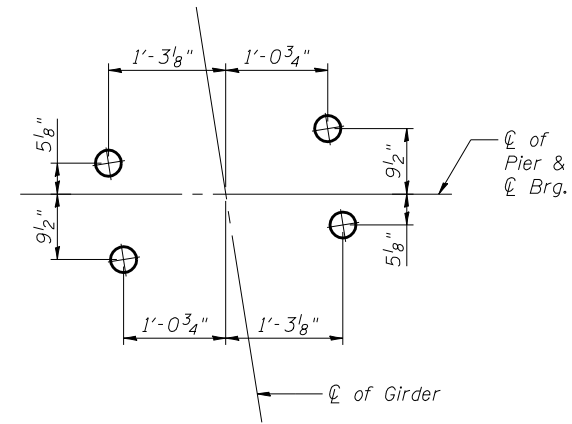
BAR n10(E)



BAR u10(E)



BAR p16(E)



ANCHOR BOLT LAYOUT

BILL OF MATERIAL

Bar	No.	Size	Length	Shape
h10(E)	8	#6	49'-2"	—
h11(E)	28	#6	48'-10"	—
h13(E)	4	#5	16'-5"	—
h14(E)	4	#5	33'-3"	—
h15(E)	8	#6	57'-10"	—
h16(E)	4	#5	42'-1"	—
h17(E)	4	#5	25'-3"	—
h18(E)	4	#5	8'-4"	—
h19(E)	28	#6	54'-2"	—
h20(E)	8	#8	52'-0"	—
h21(E)	8	#8	54'-2"	—
n10(E)	154	#8	9'-11"	U
p10(E)	7	#11	49'-2"	—
p11(E)	12	#11	18'-10"	—
p12(E)	6	#9	43'-4"	—
p13(E)	6	#7	11'-2"	—
p14(E)	7	#9	57'-10"	—
p15(E)	7	#9	53'-10"	—
p16(E)	7	#9	12'-7"	—
s10(E)	254	#5	10'-1"	□
s11(E)	44	#5	9'-9"	□
s12(E)	44	#5	7'-11"	□
s13(E)	84	#4	9'-0"	□
s14(E)	150	#6	16'-2"	□
s15(E)	150	#6	17'-4"	□
s16(E)	30	#6	11'-5"	□
s17(E)	130	#5	6'-2"	□
s18(E)	84	#4	9'-6"	□
u10(E)	14	#6	9'-9"	□
v10(E)	154	#8	14'-10"	—
w10(E)	22	#5	29'-4"	—
w11(E)	11	#5	48'-6"	—
Structure Excavation		Cu. Yd.	377	
Concrete Structures		Cu. Yd.	269.2	
Reinforcement Bars, Epoxy Coated		Pound	43,570	
Furnishing Steel Piles HP14x73		Foot	4,060	
Driving Piles		Foot	4,060	
Test Pile Steel HP14x73		Each	1	

PILE DATA

Type: Steel HP 14x73
 Nominal Required Bearing: 382 kips
 Factored Resistance Available: 210 kips
 Est. Length: 72.5 feet
 No. Production Piles: 56
 No. Test Piles: 1

MINIMUM BAR LAP

Bar	Lap
#4	2'-7"
#5	3'-3"
#6	3'-10"
#8	6'-9"
#9	8'-7"