

STATE OF ILLINOIS
 DEPARTMENT OF TRANSPORTATION
 DIVISION OF HIGHWAYS

**PROPOSED
 HIGHWAY PLANS**

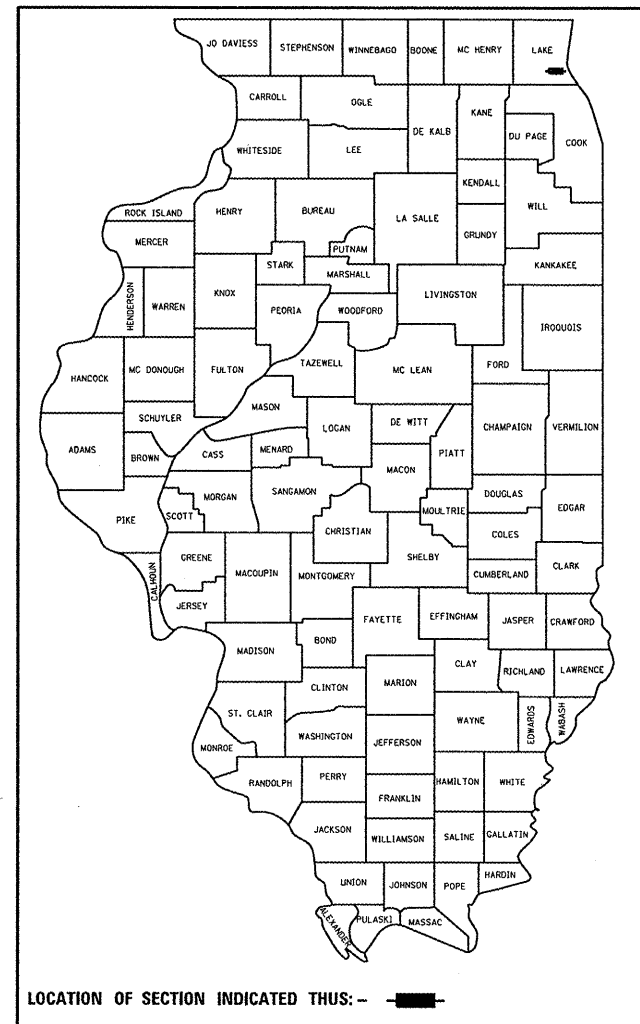
VARIOUS LOCATIONS IN LAKE COUNTY
 LIGHT EMITTING DIODE (LED) INSTALLATION

SECTION 2012-003 I
 LAKE COUNTY

FOR INDEX OF SHEETS, SEE SHEET NO. 2

F.A.P. RTE.	SECTION	COUNTY	TOTAL SHEETS	SHEET NO.
	2012-003 I	LAKE	102	1
		ILLINOIS	CONTRACT NO. 60T41	

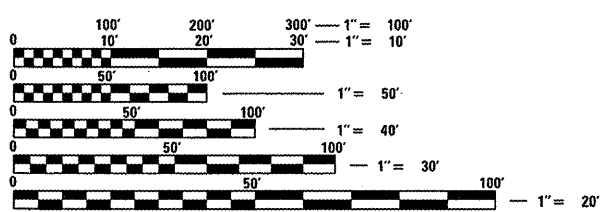
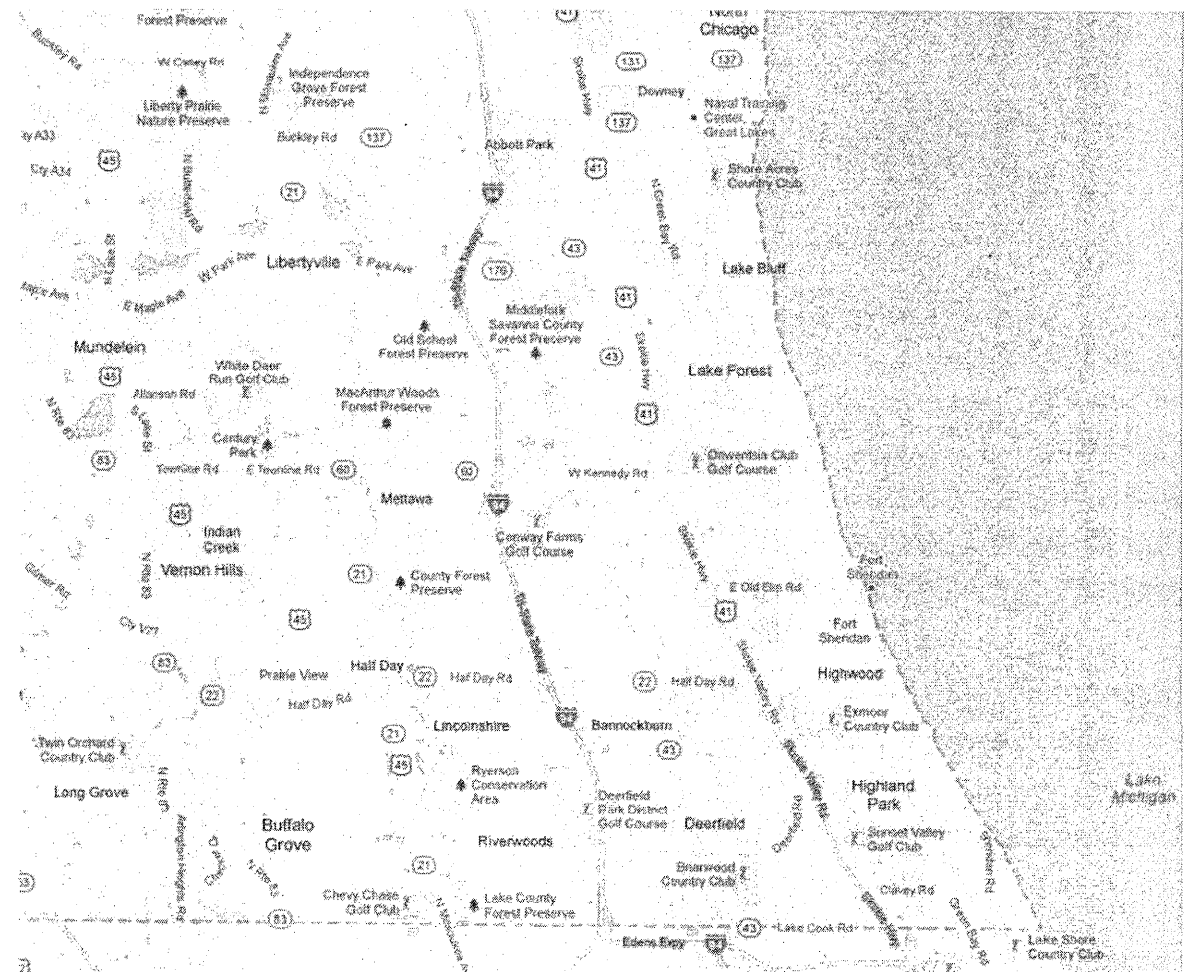
D-91-349-12



STANDARDS

- 701006-03 OFF-ROAD OPERATIONS 2L, 2W, 15' (4.5 m) TO 24" (600 mm) FROM PAVEMENT EDGE
- 701101-02 OFF-ROAD OPERATIONS MULTILANE, 15' (4.5 m) TO 24" (600 mm) FROM PAVEMENT EDGE
- 701701-08 URBAN LANE CLOSURE MULTILANE INTERSECTION
- 701901-02 TRAFFIC CONTROL DEVICES
- 720001-01 SIGN PANEL MOUNTING DETAIL
- 720006-03 SIGN PANEL ERECTION DETAILS
- 857001-01 STANDARD PHASE DESIGNATION DIAGRAMS AND PHASE SEQUENCES
- 862001-01 UNINTERRUPTABLE POWER SUPPLY (UPS)
- 880001-01 SPAN WIRE MOUNTED SIGNALS AND FLASHING BEACON INSTALLATION
- 880006-01 TRAFFIC SIGNAL MOUNTING DETAILS

C-91-349-12



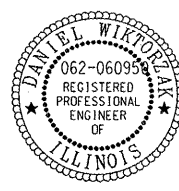
FULL SIZE PLANS HAVE BEEN PREPARED USING STANDARD ENGINEERING SCALES. REDUCED SIZED PLANS WILL NOT CONFORM TO STANDARD SCALES. IN MAKING MEASUREMENTS ON REDUCED PLANS, THE ABOVE SCALES MAY BE USED.

J.U.L.I.E.
 JOINT UTILITY LOCATION INFORMATION FOR EXCAVATION
 1-800-892-0123
 OR 811

PROJECT ENGINEER: SUDUD MAHMOUD
 PROJECT MANAGER: DARYLE DREW

CONTRACT NO. 60T41

LAKE COUNTY
 LOCATION MAP
 SEE SHEET NO. 3



Signed *Daniel Wiktorzak*
 DANIEL WIKTORZAK, P.E. IL Lic. No. 062-060950
 Expires 11-30-2013
 Date 03/23/11

STATE OF ILLINOIS
 DEPARTMENT OF TRANSPORTATION
 DIVISION OF HIGHWAYS

SUBMITTED *March 30* 20 *12*

Darin M. O'Keefe
 DEPUTY DIRECTOR OF HIGHWAYS, REGION ENGINEER

John D. Pavanelli P.E.
 COUNTY ENGINEER OF DESIGN AND ENVIRONMENT

May 11 20 *12*

William R. Freyler
 COUNTY DIRECTOR OF HIGHWAYS, CHIEF ENGINEER

PRINTED BY THE AUTHORITY
 OF THE STATE OF ILLINOIS