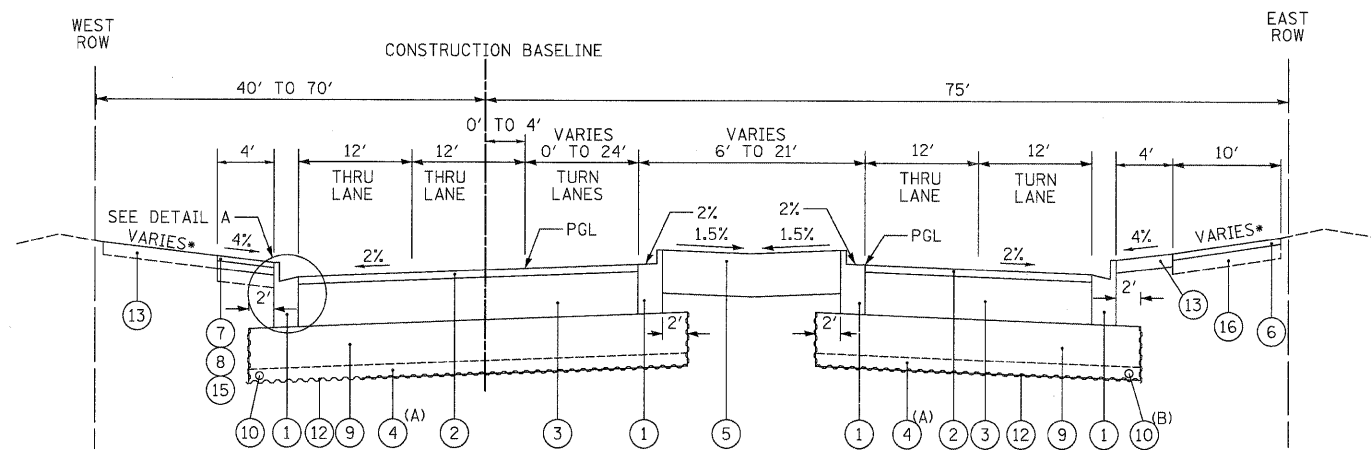


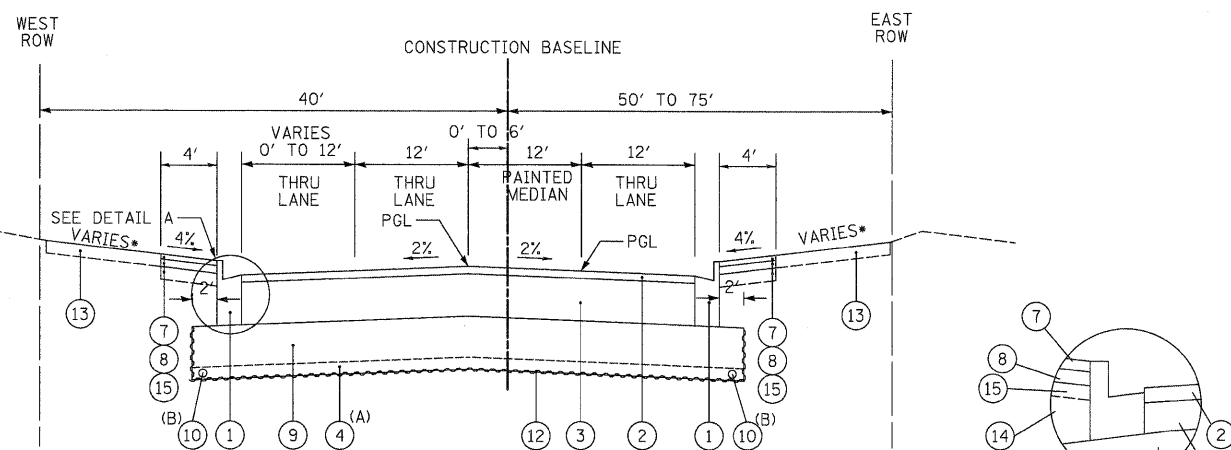
DATE	
BY	
SURVEYED	
PLOTTED	
DATE	
NO.	
FINAL SURVEY	
NOTE BOOK	
AREAS CHECKED	

DATE	
BY	
SURVEYED	
PLOTTED	
DATE	
NO.	
ORIGINAL SURVEY	
NOTE BOOK	
AREAS CHECKED	



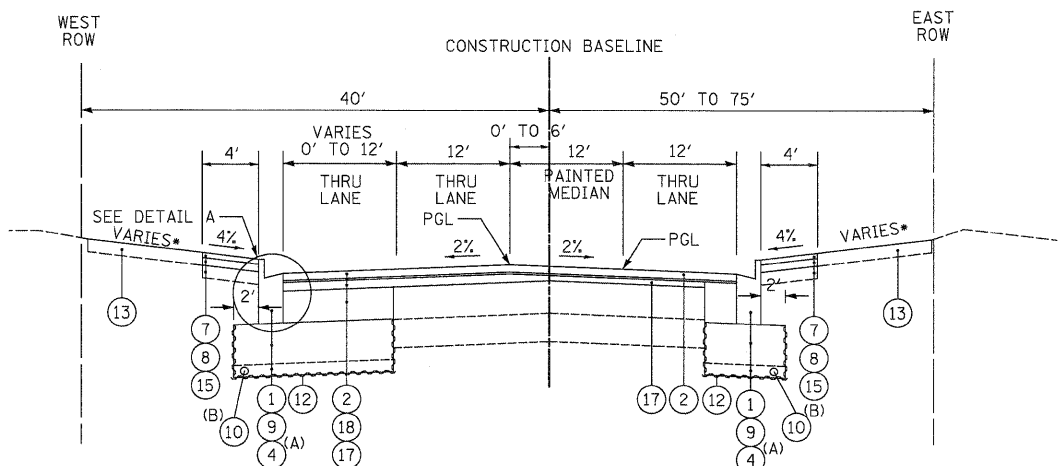
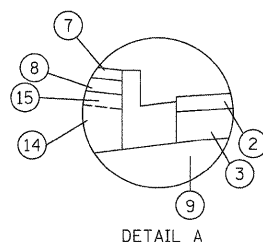
PROPOSED TYPICAL SECTION QUENTIN ROAD  
STA 11+41.6 TO STA 17+25.5

- (A) SEE SOIL NOTE AND CROSS SECTION SHEETS FOR LOCATIONS AND DEPTH OF UNDERCUTTING  
(B) UNDER DRAINS AT THE OUTSIDE EDGE OF THE PAVEMENT DRAIN THE AGGREGATE SUBGRADE WITH TRANSVERSE UNDERDRAINS INSTALLED APPROXIMATELY EVERY 300 FT TO 500 FT, AT THE LOW POINTS OF THE PROFILE, AND AT ANY UNDERCUTS DETERMINED IN THE FIELD.



PROPOSED TYPICAL SECTION QUENTIN ROAD  
STA 17+25.5 TO STA 17+84.4

- (A) SEE SOIL NOTE AND CROSS SECTION SHEETS FOR LOCATIONS AND DEPTH OF UNDERCUTTING  
(B) UNDER DRAINS AT THE OUTSIDE EDGE OF THE PAVEMENT DRAIN THE AGGREGATE SUBGRADE WITH TRANSVERSE UNDERDRAINS INSTALLED APPROXIMATELY EVERY 300 FT TO 500 FT, AT THE LOW POINTS OF THE PROFILE, AND AT ANY UNDERCUTS DETERMINED IN THE FIELD.



PROPOSED TYPICAL SECTION QUENTIN ROAD  
STA 17+84.4 TO STA 18+85.0

- (A) SEE SOIL NOTE AND CROSS SECTION SHEETS FOR LOCATIONS AND DEPTH OF UNDERCUTTING  
(B) UNDER DRAINS AT THE OUTSIDE EDGE OF THE PAVEMENT DRAIN THE AGGREGATE SUBGRADE WITH TRANSVERSE UNDERDRAINS INSTALLED APPROXIMATELY EVERY 300 FT TO 500 FT, AT THE LOW POINTS OF THE PROFILE, AND AT ANY UNDERCUTS DETERMINED IN THE FIELD.

PROPOSED LEGEND

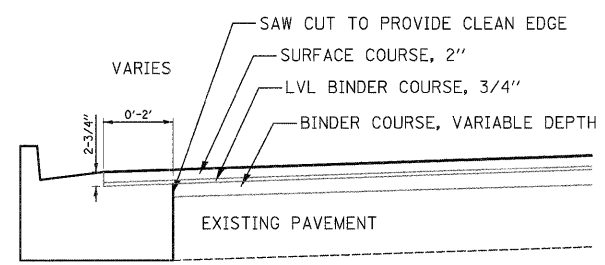
- ① PROPOSED COMBINATION CONCRETE CURB AND GUTTER, TYPE B-6.24
  - ② PROPOSED HOT-MIX ASPHALT SURFACE COURSE, MIX "D", N70, 2"
  - ③ PROPOSED HOT-MIX ASPHALT BINDER COURSE, IL-19.0, N70, 8-1/2"
  - ④ PROPOSED REMOVAL AND DISPOSAL OF UNSUITABLE MATERIAL AND PROPOSED P.G.E, SUBGRADE
  - ⑤ PROPOSED FURNISH AND PLACE TOPSOIL, 24" (SEE LANDSCAPING SHEETS FOR LIMITS)
  - ⑥ PROPOSED HOT-MIX ASPHALT SURFACE COURSE, MIX "D", N50, 3"
  - ⑦ PROPOSED HOT-MIX ASPHALT SURFACE COURSE, MIX "D", N50, 1-1/2"
  - ⑧ PROPOSED HOT-MIX ASPHALT BINDER COURSE, IL-19.0, N50, 2-1/2"
  - ⑨ PROPOSED AGGREGATE SUBGRADE, 12"
  - ⑩ PROPOSED PIPE UNDERDRAINS, 4" (MODIFIED)
  - ⑪ NUMBER NOT USED
  - ⑫ PROPOSED GEOTECHNICAL FABRIC FOR GROUND STABILIZATION
  - ⑬ PROPOSED FURNISH AND PLACE TOPSOIL, 4" (SEE LANDSCAPING SHEETS FOR LIMITS)
  - ⑭ PROPOSED FURNISHED EXCAVATION
  - ⑮ PROPOSED AGGREGATE BASE COURSE, TYPE A, 4"
  - ⑯ PROPOSED AGGREGATE BASE COURSE, TYPE A, 6"
  - ⑰ PROPOSED LEVELING BINDER (MACHINE METHOD), N70, VARIABLE DEPTH
  - ⑱ PROPOSED POLYMERIZED LEVELING BINDER (MACHINE METHOD) IL-4.75, N50, 3/4"
- SLOPE AWAY FROM ROAD IN FILL SECTIONS SLOPE TOWARD ROAD IN CUT SECTIONS

SOILS NOTE:

POROUS GRANULAR EMBANKMENT, SUBGRADE (PGES) HAS BEEN PROVIDED AT THE LOCATIONS INDICATED FOR SOILS WHICH TEND TO BE UNSTABLE WHEN WET. THE ACTUAL NEED FOR REMOVAL AND REPLACEMENT WITH PGES WILL BE DETERMINED IN THE FIELD AT THE TIME OF CONSTRUCTION BY THE ENGINEER (BY USE OF A CONE PENETROMETER IN CONJUNCTION WITH THE IDOT SUBGRADE MANUAL). IF UNSTABLE SOILS ARE ENCOUNTERED, THE SOILS SHALL BE REMOVED AND REPLACED WITH PGES. IF UNSTABLE SOILS ARE NOT ENCOUNTERED, THEN THE QUANTITY WILL BE DEDUCTED AND NO ADDITIONAL COMPENSATION WILL BE DUE THE CONTRACTOR.

THE LIMITS OF UNSTABLE SOILS ARE AT THE APPROXIMATE LOCATIONS AS FOLLOWS:

STA TO STA	ESTIMATED UNDERCUT BELOW DESIGN SUBGRADE
14+69 TO 17+37	10" FOR FULL WIDTH



COMBINATION CONCRETE CURB AND GUTTER, TYPE B-6.12 MODIFIED/B-6.24 MODIFIED/ MEDIAN SB-6.12 MODIFIED  
AT LOCATIONS WHERE WIDENING IS 2' OR LESS

\*NOTE:

1. AT LOCATIONS WHERE WIDENING IS 2' OR LESS - POURED MONOLITHIC WITH CURB.
2. AT LOCATIONS WHERE WIDENING IS 2' TO 4' THERE SHALL BE A NON-MONOLITHIC PCC BASE COURSE.
3. AT LOCATIONS WHERE WIDENING IS GREATER THAN 4', HMA PAVEMENT WILL BE CONSTRUCTED.

**CIVILTECH**  
450 E Devon Ave, Suite 300  
Itasca, Illinois 60143  
Tel: 630.773.3900 Fax: 630.773.3975  
www.civiltechinc.com

DESIGNED - JRR	REVISED -
DRAWN - JRR	REVISED -
CHECKED - RTM	REVISED -
DATE - 10/24/2011	REVISED -

STATE OF ILLINOIS  
DEPARTMENT OF TRANSPORTATION

NO SCALE

PROPOSED TYPICAL SECTIONS

SHEET NO. 5 OF 8 SHEETS

F.A.U. RTE.	SECTION	COUNTY	TOTAL SHEETS	SHEET NO.
364	02-00051-08-WR	LAKE	188	12
CONTRACT NO. 63649			FED. ROAD DIST. NO. 1 ILLINOIS FED. AID PROJECT	