

PART OF THE NE 1/4 OF SEC. 33 AND PART OF THE NW 1/4 SEC. 34, TWP. 43 N., R. 10 E. OF THE 3RD. P.M., IN LAKE COUNTY, ILLINOIS.

Schedule of Ties		
Point Number	Tie to point	Tie Distance (feet)
1	T1	60.79
	T2	22.57
	T3	53.03
2	T1	58.72
	T2	19.57
	T3	51.37
3	T1	29.70
	T2	23.42
	T3	36.93
4	T1	21.49
	T2	29.82
	T3	33.81
5	T1	30.60
	T2	30.38
	T3	11.70
6	T1	33.83
	T2	32.89
	T3	16.02

Existing & Proposed Pavement Long Grove Road Curve #1

P.I. = Sta. 104+50.84
 Δ = 10°44'36"
 R = 4092.66'
 L = 384.83'
 T = 767.41'
 E = 18.05'
 P.C. = Sta. 100+66.01
 P.T. = Sta. 108+33.42

COORDINATE TABLE			
STATION	OFFSET	NORTH	EAST
30+10.64	40.00' Rt.	2,001,782.329	1,057,628.254
32+03.46	40.00' Lt.	2,001,975.311	1,057,548.676
103+98.42	40.00' Lt.	2,001,685.384	1,057,397.303
104+53.01	40.00' Lt.	2,001,698.411	1,057,449.767
104+53.01	45.00' Lt.	2,001,703.255	1,057,448.530
104+60.53	40.00' Rt.	2,001,622.786	1,057,476.925
104+60.53	60.00' Rt.	2,001,603.418	1,057,481.910
104+90.10	40.00' Rt.	2,001,650.332	1,057,505.811
104+90.10	60.00' Rt.	2,001,611.000	1,057,510.935
105+00.96	40.00' Rt.	2,001,633.156	1,057,516.406
105+22.34	45.00' Lt.	2,001,720.785	1,057,514.817
105+36.70	40.00' Lt.	2,001,719.740	1,057,529.851
106+66.60	60.00' Rt.	2,001,660.606	1,057,683.001
106+74.54	40.00' Lt.	2,001,758.422	1,057,660.742

LEGEND

- SECTION CORNER
- QUARTER SECTION CORNER
- SECTION LINE
- QUARTER SECTION LINE
- QUARTER, QUARTER SECTION LINE
- PLATTED LOT LINE
- PROPERTY (DEED) LINE
- APL APPARENT PROPERTY LINE
- CENTER LINE
- EXISTING RIGHT OF WAY LINE
- PROPOSED RIGHT OF WAY LINE
- PROPOSED EASEMENT
- MEASURED DIMENSION
- COMPUTED DIMENSION
- RECORD DATA
- EXISTING BUILDING

Bearings are referenced to the Illinois Coordinate System NAD83 (1997) East Zone at Found Geodetic Survey Control Monuments "Lake Zurich", P.I.D. AJ3081 and "VGB 3A", P.I.D. AJ3080.

STATE OF ILLINOIS }
 COUNTY OF LAKE }
 THIS IS TO CERTIFY THAT WE, JORGENSEN & ASSOCIATES, INC., AN ILLINOIS PROFESSIONAL DESIGN FIRM LAND SURVEYING CORPORATION, NUMBER 184-2771, HAVE SURVEYED THE PLAT OF HIGHWAYS SHOWN HEREON BETWEEN SECTION 33, TOWNSHIP 43N., RANGE 10E. AND SECTION 34, TOWNSHIP 43N., RANGE 10E., OF THE THIRD PRINCIPAL MERIDIAN, LAKE COUNTY, THAT THE SURVEY IS TRUE AND COMPLETE AS SHOWN TO THE BEST OF MY KNOWLEDGE AND BELIEF, THAT THE PLAT CORRECTLY REPRESENTS SAID SURVEY, THAT ALL MONUMENTS FOUND AND ESTABLISHED ARE OF PERMANENT QUALITY AND OCCUPY THE POSITIONS SHOWN THEREON AND THAT THE MONUMENTS ARE SUFFICIENT TO ENABLE THE SURVEY TO BE RETRACED. MADE FOR THE DEPARTMENT OF TRANSPORTATION, STATE OF ILLINOIS.

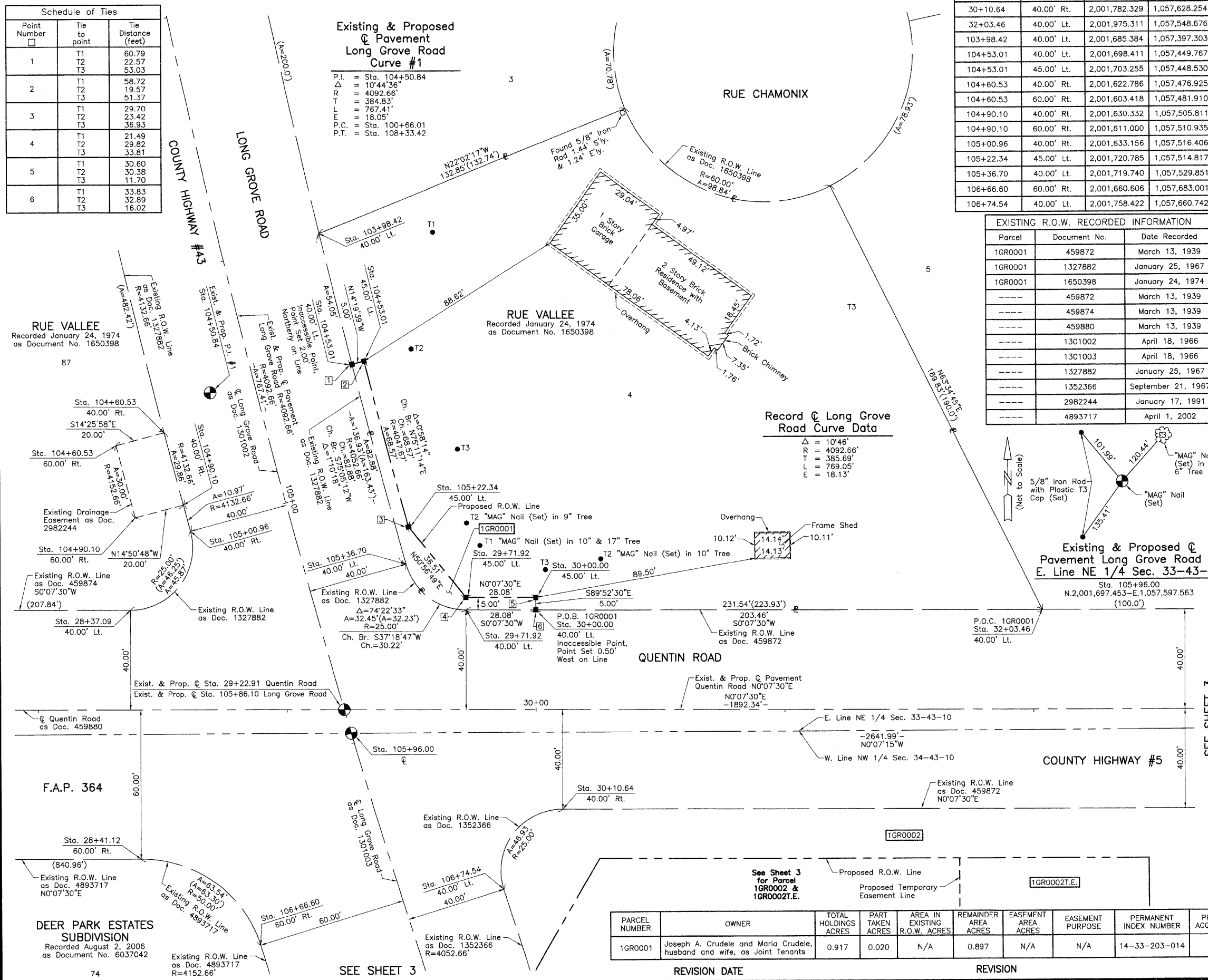
DATED AT LAKE VILLA, ILLINOIS THIS 17th DAY OF July 2008 A.D.

Christian H. Jorgensen PRESIDENT
 ILLINOIS PROFESSIONAL LAND SURVEYOR NO. 35-2797
 LICENSE EXPIRATION DATE NOVEMBER 30, 2008
 THIS PROFESSIONAL SERVICE CONFORMS TO THE CURRENT ILLINOIS MINIMUM STANDARDS FOR A BOUNDARY SURVEY.
 Coordinates are based on the Published Metric Coordinate Values at Found Geodetic Survey Control Monument "Lake Zurich", P.I.D. AJ3081, of N.613,539.945-E.320,649.905.
 NOTE: SURFACE COORDINATES ARE SHOWN.

EXISTING R.O.W. RECORDED INFORMATION		
Parcel	Document No.	Date Recorded
1GR0001	459872	March 13, 1939
1GR0001	1327882	January 25, 1967
1GR0001	1650398	January 24, 1974
-----	459872	March 13, 1939
-----	459874	March 13, 1939
-----	459880	March 13, 1939
-----	1301002	April 18, 1966
-----	1301003	April 18, 1966
-----	1327882	January 25, 1967
-----	1352366	September 21, 1967
-----	2982244	January 17, 1991
-----	4893717	April 1, 2002

Record @ Long Grove Road Curve Data

Δ = 10°46'
 R = 4092.66'
 T = 385.69'
 L = 769.05'
 E = 18.13'



PARCEL NUMBER	OWNER	TOTAL HOLDINGS ACRES	PART TAKEN ACRES	AREA IN EXISTING R.O.W. ACRES	REMAINDER AREA ACRES	EASEMENT AREA ACRES	EASEMENT PURPOSE	PERMANENT INDEX NUMBER	PROPERTY ACQUIRED BY
1GR0001	Joseph A. Crudele and Maria Crudele, husband and wife, as Joint Tenants	0.917	0.020	N/A	0.897	N/A	N/A	14-33-203-014	

COORDINATE TABLE			
STATION	OFFSET	NORTH	EAST
28+37.09	40.00' Lt.	2,001,608.953	1,057,547.876
28+41.12	60.00' Rt.	2,001,612.764	1,057,647.884
29+71.92	40.00' Lt.	2,001,743.776	1,057,548.170
29+71.92	45.00' Lt.	2,001,743.786	1,057,543.168
30+00.00	40.00' Lt.	2,001,771.859	1,057,548.232
30+00.00	45.00' Lt.	2,001,771.870	1,057,543.229

JORGENSEN & ASSOCIATES, INC.
 120 PARK AVENUE
 LAKE VILLA, ILLINOIS 60046
 (847) 356-3371

PLAT OF HIGHWAYS
 STATE OF ILLINOIS
 DEPARTMENT OF TRANSPORTATION
 F.A.P. 364 (QUENTIN ROAD)
 SECTION 02-00051-08-WR LAKE COUNTY
 PROJECT JOB NO. R-91-013-08
 STATION 28+00 TO STATION 33+00
 STATION 103+00 TO STATION 107+00
 SCALE: 1"=20' SHEET 2 OF 17

BUREAU OF LAND ACQUISITION
 201 WEST CENTER COURT
 SCHAMBURG, ILLINOIS 60196