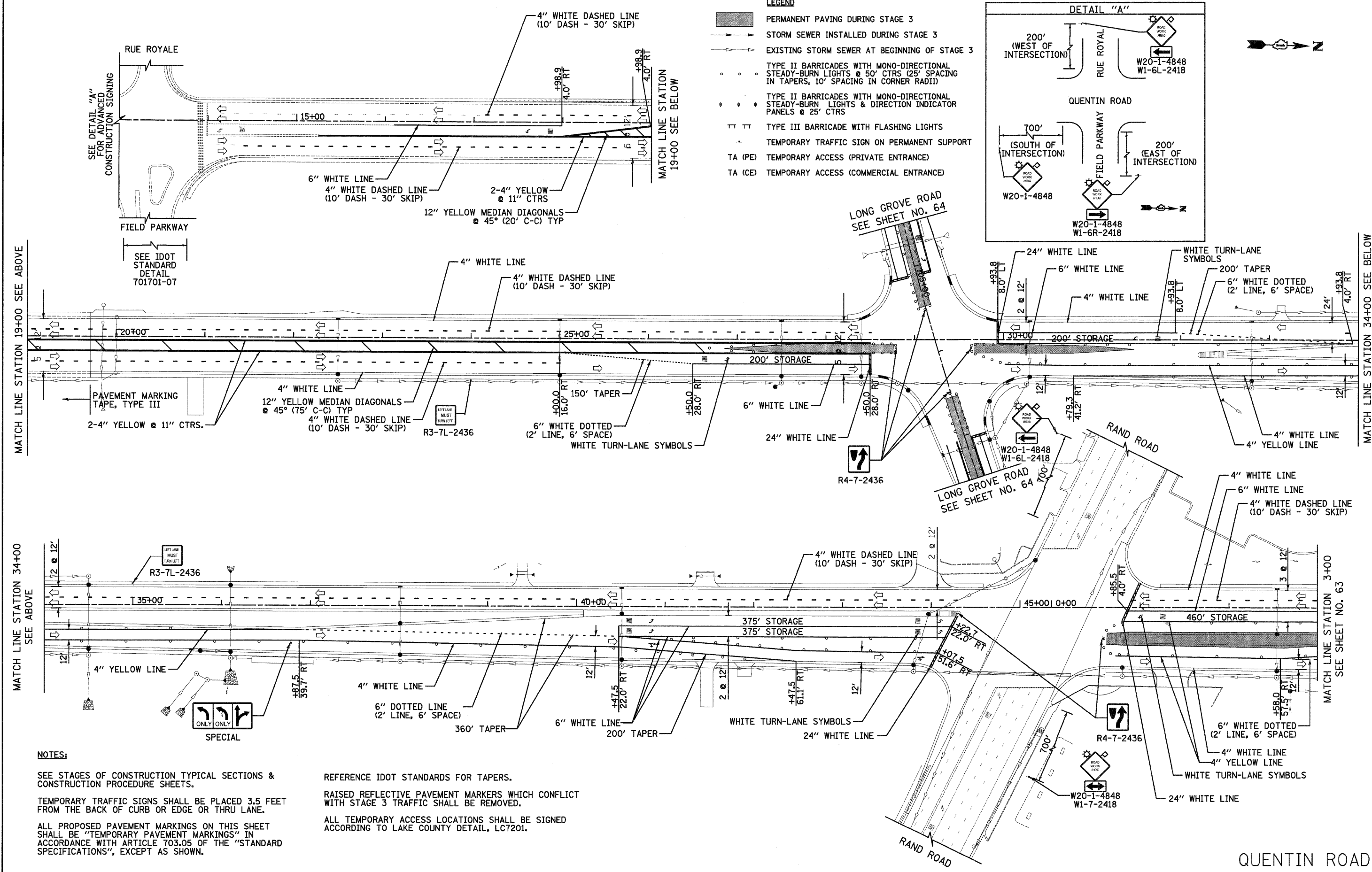
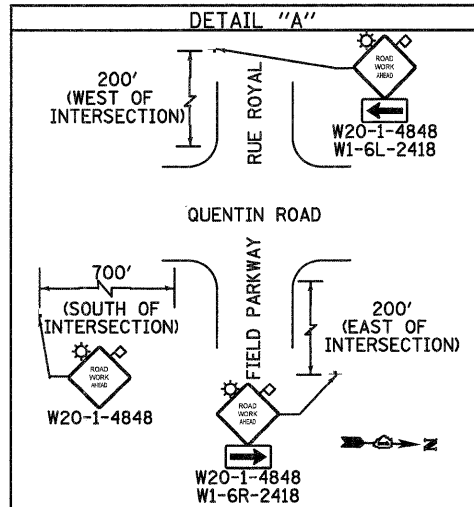


DATE	
BY	
FINAL SURVEY	
ORIGINAL SURVEY	
DATE	
NO.	

DATE	
BY	
FINAL SURVEY	
ORIGINAL SURVEY	
DATE	
NO.	



- LEGEND**
- PERMANENT PAVING DURING STAGE 3
 - STORM SEWER INSTALLED DURING STAGE 3
 - EXISTING STORM SEWER AT BEGINNING OF STAGE 3
 - TYPE II BARRICADES WITH MONO-DIRECTIONAL STEADY-BURN LIGHTS @ 50' CTRS (25' SPACING IN TAPERS, 10' SPACING IN CORNER RADII)
 - TYPE II BARRICADES WITH MONO-DIRECTIONAL STEADY-BURN LIGHTS & DIRECTION INDICATOR PANELS @ 25' CTRS
 - TYPE III BARRICADE WITH FLASHING LIGHTS
 - TEMPORARY TRAFFIC SIGN ON PERMANENT SUPPORT
 - TA (PE) TEMPORARY ACCESS (PRIVATE ENTRANCE)
 - TA (CE) TEMPORARY ACCESS (COMMERCIAL ENTRANCE)



NOTES:

SEE STAGES OF CONSTRUCTION TYPICAL SECTIONS & CONSTRUCTION PROCEDURE SHEETS.

TEMPORARY TRAFFIC SIGNS SHALL BE PLACED 3.5 FEET FROM THE BACK OF CURB OR EDGE OR THRU LANE.

ALL PROPOSED PAVEMENT MARKINGS ON THIS SHEET SHALL BE "TEMPORARY PAVEMENT MARKINGS" IN ACCORDANCE WITH ARTICLE 703.05 OF THE "STANDARD SPECIFICATIONS", EXCEPT AS SHOWN.

REFERENCE IDOT STANDARDS FOR TAPERS.

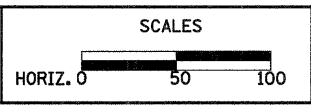
RAISED REFLECTIVE PAVEMENT MARKERS WHICH CONFLICT WITH STAGE 3 TRAFFIC SHALL BE REMOVED.

ALL TEMPORARY ACCESS LOCATIONS SHALL BE SIGNED ACCORDING TO LAKE COUNTY DETAIL, LC7201.

CIVILTECH
 450 E Devon Ave, Suite 300
 Itasca, Illinois 60143
 Tel: 630.773.3900 Fax: 630.773.3975
 www.civiltechinc.com

DESIGNED - JRR	REVISED -
DRAWN - JRR	REVISED -
CHECKED - RTM	REVISED -
DATE - 10/24/2011	REVISED -

**STATE OF ILLINOIS
 DEPARTMENT OF TRANSPORTATION**



STAGES OF CONSTRUCTION STAGE III

SHEET NO. 1 OF 3 SHEETS

F.A.U. RTE.	SECTION	COUNTY	TOTAL SHEETS	SHEET NO.
364	02-00051-08-WR	LAKE	188	62
FED. ROAD DIST. NO. 1 ILLINOIS FED. AID PROJECT			CONTRACT NO. 63649	

QUENTIN ROAD