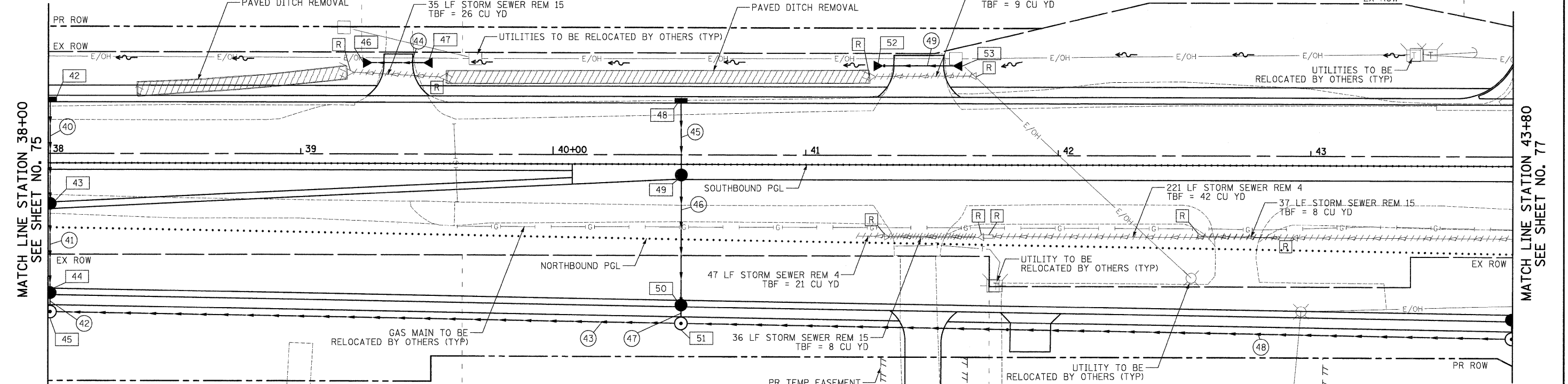
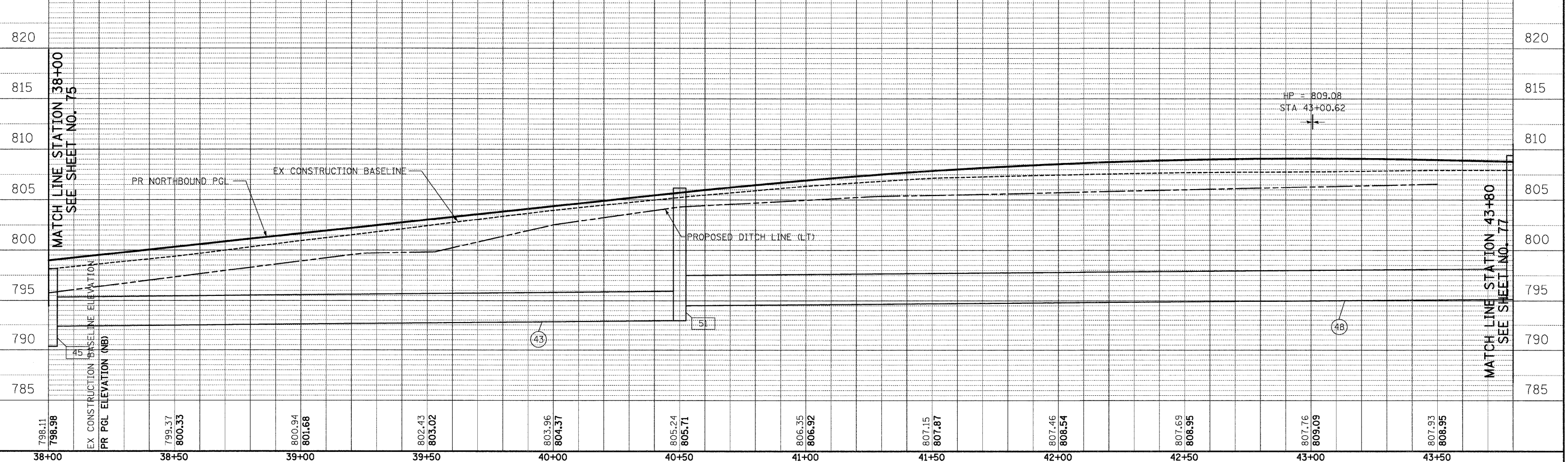


- 42 STA 38+01, 21.1' LT INLETS TA T24F&G RIM = 798.53 INV = 794.53 (E)
- 43 STA 38+01, 20.1' RT CB TA 4 DIA T24F&G RIM = 799.12 INV = 794.34 (W) INV = 794.24 (E)
- 44 STA 38+01, 55.6' RT CB TA 4 DIA T24F&G RIM = 798.53 INV = 794.08 (W) INV = 792.36 (E)
- 45 STA 38+01, 63.1' RT MAN TA 5 DIA T1F CL RIM = 798.16 INV = 792.34 (W) INV = 790.34 (S) INV = 792.34 (N)
- 46 STA 39+25, 35.6' LT PRC FLAR END SEC 15 INV = 799.70 (S)
- 47 STA 39+52.5, 35.6' LT PRC FLAR END SEC 15 INV = 799.84 (N)
- 48 STA 40+50, 21.1' LT INLET TA T24F&G RIM = 805.23 INV = 801.25 (E)
- 49 STA 40+50, 8.2' RT CB TA 4 DIA T11VF&G RIM = 805.71 INV = 800.47 (W) INV = 798.47 (E)
- 50 STA 40+50, 59.9' RT CB TA 4 DIA T24F&G RIM = 805.23 INV = 797.00 (W) INV = 795.00 (E)
- 51 STA 40+50, 67.2' RT MAN TA 5 DIA T1F CL RIM = 806.29 INV = 794.94 (W) INV = 792.95 (S) INV = 794.50 (N)
- 52 STA 41+27, 34.9' LT PRC FLAR END SEC 15 INV = 805.33 (S)
- 53 STA 41+62, 34.9' LT PRC FLAR END SEC 15 INV = 805.50 (N)



- 40 39' - STORM SEW CL A 1, 12" @ 0.50% TBF = 8 CU YD
- 41 32' - STORM SEW CL A 1, 12" @ 0.50% TBF = 7 CU YD
- 42 4' - STORM SEW CL A 1, 15" @ 0.50% TBF = 1 CU YD
- 43 245' - STORM SEW CL A 1, 36" @ 0.25%
- 44 16' - STORM SEW CL A 1, 15" @ 0.90% TBF = 2 CU YD
- 45 26' - STORM SEW CL A 1, 12" @ 3.00% TBF = 6 CU YD
- 46 49' - STORM SEW CL A 1, 12" @ 3.00% TBF = 42 CU YD
- 47 3' - STORM SEW CL A 1, 12" @ 2.00% TBF = 2 CU YD
- 48 324' - STORM SEW CL A 1, 36" @ 0.20% TBF = 52 CU YD
- 49 24' - STORM SEW CL A 1, 15" @ 0.60% TBF = 3 CU YD



798.11 798.98	799.37 800.33	800.94 801.68	802.43 803.02	803.96 804.37	805.24 805.71	806.35 806.92	807.15 807.87	807.46 808.54	807.69 808.95	807.76 808.09	807.93 808.95
38+00	38+50	39+00	39+50	40+00	40+50	41+00	41+50	42+00	42+50	43+00	43+50

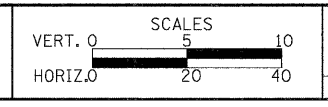
DATE	
BY	
FINAL SURVEY	
SUBMITTED	
PLOTTED	
TEMPLATE	
NOTE BOOK	
AREAS CHECKED	
NO.	

DATE	
BY	
ORIGINAL SURVEY	
SUBMITTED	
PLOTTED	
TEMPLATE	
NOTE BOOK	
AREAS CHECKED	
NO.	

CIVILTECH
 450 E Devon Ave, Suite 300
 Itasca, Illinois 60143
 Tel: 630.773.3900 Fax: 630.773.3975
 www.civiltechinc.com

DESIGNED - JRR	REVISED -
DRAWN - JRR	REVISED -
CHECKED - RTM	REVISED -
DATE - 10/24/2011	REVISED -

**STATE OF ILLINOIS
DEPARTMENT OF TRANSPORTATION**



DRAINAGE AND UTILITY

SHEET NO. 5 OF 14 SHEETS STA. 38+00 TO STA. 43+80

F.A.U. RTE.	SECTION	COUNTY	TOTAL SHEETS	SHEET NO.
364	02-00051-08-WR	LAKE	188	76
CONTRACT NO. 63649				
FED. ROAD DIST. NO. 1 ILLINOIS FED. AID PROJECT				