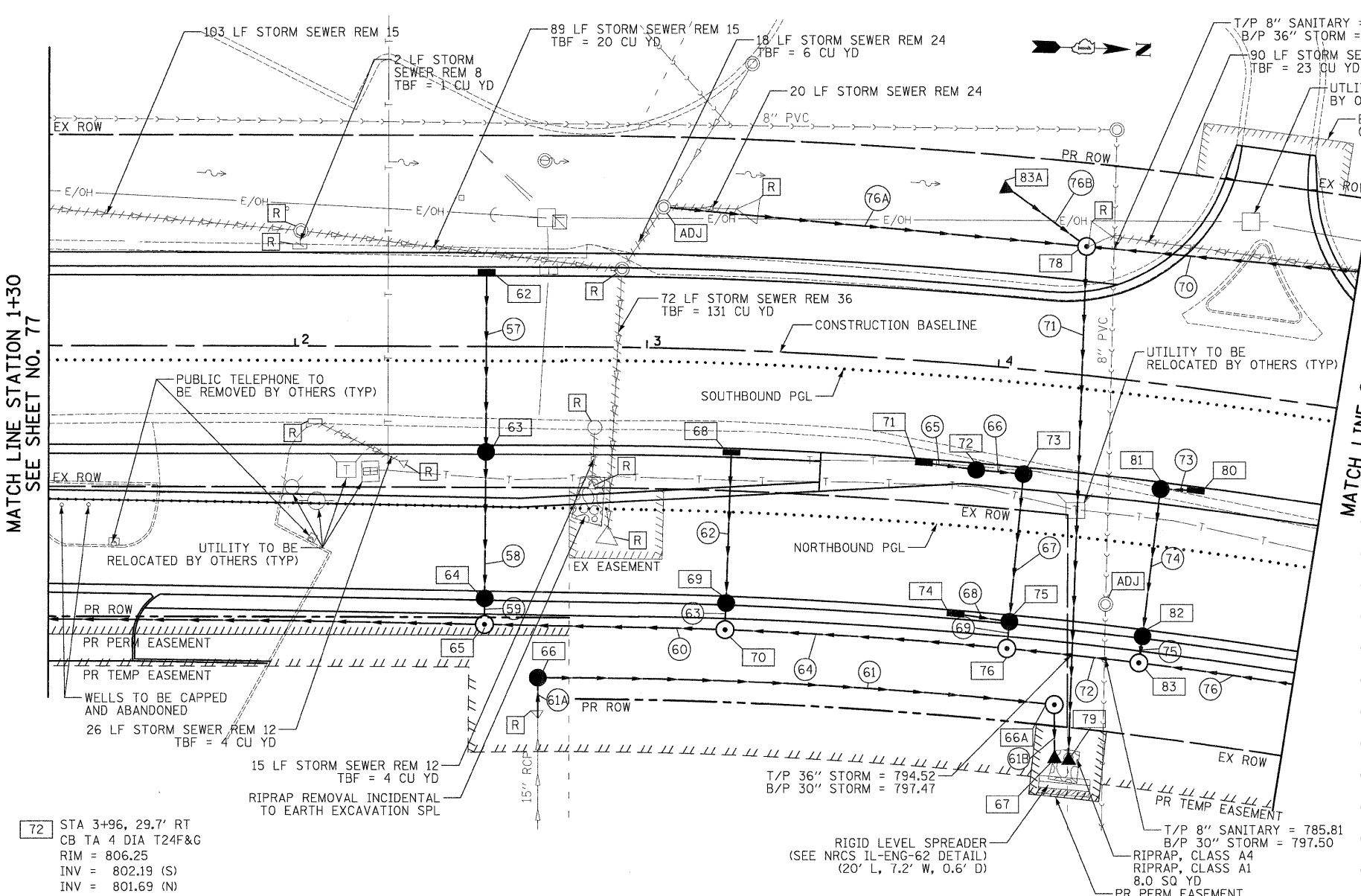


DATE	
BY	
DESIGNED	
DRAWN	
CHECKED	
DATE	
NO.	

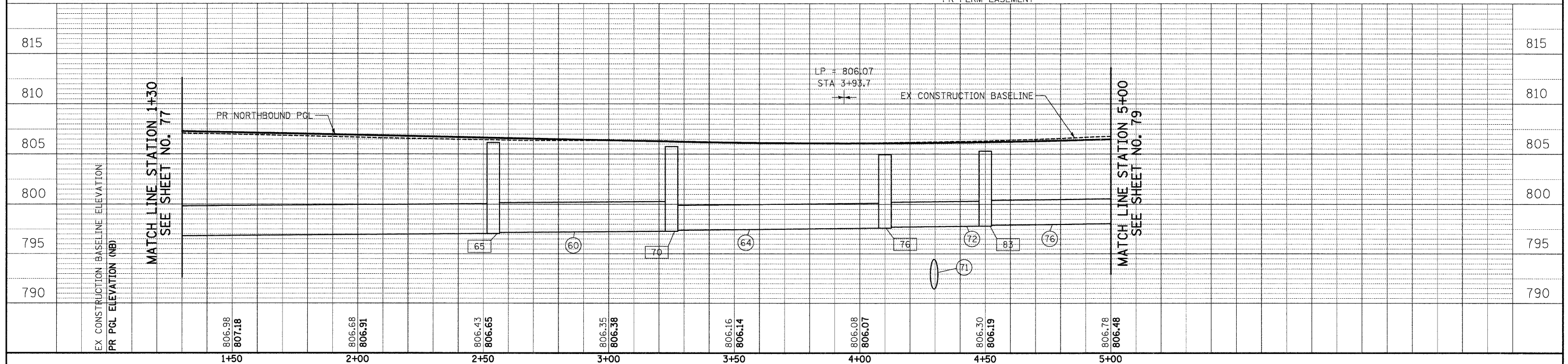
DATE	
BY	
DESIGNED	
DRAWN	
CHECKED	
DATE	
NO.	

- 62 STA 2+54, 21.1' LT
INLETS TA T24F&G
RIM = 806.75
INV = 802.75 (E)
- 63 STA 2+54, 29.8' RT
CB TA 4 DIA T24F&G
RIM = 806.63
INV = 802.51 (W)
INV = 800.51 (E)
- 64 STA 2+54, 71.6' RT
CB TA 4 DIA T24F&G
RIM = 806.15
INV = 800.32 (W)
INV = 798.32 (E)
- 65 STA 2+54, 79.0' RT
MAN TA 5 DIA T1F CL
RIM = 806.14
INV = 798.30 (W)
INV = 797.05 (S)
INV = 797.16 (N)
- 66 STA 2+69, 94.0' RT
CB TA 4 DIA T8C
RIM = 804.38
INV = 799.71 (E)
INV = 797.71 (N)
- 66A STA 4+26, 94.0' RT
MAN TA 4 DIA T1F CL
RIM = 799.97
INV = 791.99 (S)
INV = 791.52 (E)
- 67 STA 4+28.0, 110.5' RT
PRC FLAR END SEC 18
INV = 791.16
- 68 STA 3+25, 29.1' RT
INLETS TA T24F&G
RIM = 806.33
INV = 802.33 (E)
- 69 STA 3+25, 71.9' RT
CB TA 4 DIA T24F&G
RIM = 805.60
INV = 801.33 (W)
INV = 799.33 (E)
- 70 STA 3+25, 79.5' RT
MAN TA 5 DIA T1F CL
RIM = 805.74
INV = 799.23 (W)
INV = 797.28 (S)
INV = 797.38 (N)
- 71 STA 3+81.5, 29.0' RT
INLETS TA T24F&G
RIM = 806.25
INV = 802.19 (S)
INV = 802.25 (N)
- 72 STA 3+96, 29.7' RT
CB TA 4 DIA T24F&G
RIM = 806.25
INV = 802.19 (S)
INV = 801.69 (N)



- 73 STA 4+10, 29.7' RT
CB TA 4 DIA T24F&G
RIM = 806.26
INV = 801.64 (S)
INV = 801.14 (E)
- 74 STA 3+93.7, 71.1' RT
INLETS TA T24F&G
RIM = 805.24
INV = 801.24 (N)
- 75 STA 4+10, 71.9' RT
CB TA 4 DIA T24F&G
RIM = 805.24
INV = 800.95 (W)
INV = 799.18 (E)
INV = 801.18 (S)
- 76 STA 4+10, 79.5' RT
MAN TA 5 DIA T1F CL
RIM = 804.95
INV = 799.16 (W)
INV = 797.61 (S)
INV = 797.71 (N)
- 77 NUMBER NOT USED
- 78 STA 4+21.4, 36.3' LT
MAN TA 5 DIA T1F CL
RIM = 806.85
INV = 801.03 (N)
INV = 792.53 (E)
INV = 800.05 (S)
INV = 803.19 (SW)
- 79 STA 4+32.4, 110.5' RT
PRC FLAR END SEC 36
W/ GRATING
INV = 791.16
- 80 STA 4+60, 29.0' RT
INLETS TA T24F&G
RIM = 806.42
INV = 802.42 (S)
- 81 STA 4+50, 29.6' RT
CB TA 4 DIA T24F&G
RIM = 806.37
INV = 802.39 (N)
INV = 800.89 (E)
- 82 STA 4+50, 71.9' RT
CB TA 4 DIA T24F&G
RIM = 805.35
INV = 800.69 (W)
INV = 799.19 (E)
- 83 STA 4+50, 79.5' RT
MAN TA 5 DIA T1F CL
RIM = 805.29
INV = 799.17 (W)
INV = 797.81 (S)
INV = 797.90 (N)
- 83A STA 3+97, 51.6' LT
PRC FLAR END SEC 12
INV = 803.88 (N)

- 57 48' - STORM SEW CL A 1, 12" @ 0.60%
TBF = 8 CU YD
- 58 38' - STORM SEW CL A 1, 12" @ 0.50%
TBF = 14 CU YD
- 59 3' - STORM SEW CL A 1, 15" @ 0.50%
TBF = 1 CU YD
- 60 64' - STORM SEW CL A 1, 36" @ 0.20%
- 61 143' - STORM SEW CL A 1, 18" @ 4.00%
- 61A 10' - STORM SEW CL A 1, 15" @ 1.10%
- 61B 15' - STORM SEW CL A 1, 18" @ 2.50%
- 62 40' - STORM SEW CL A 1, 12" @ 2.50%
TBF = 7 CU YD
- 63 4' - STORM SEW CL A 1, 12" @ 2.50%
TBF = 1 CU YD
- 64 76' - STORM SEW CL A 1, 30" @ 0.30%
- 65 12' - STORM SEW CL A 1, 12" @ 0.50%
TBF = 2 CU YD
- 66 10' - STORM SEW CL A 1, 12" @ 0.50%
TBF = 3 CU YD
- 67 39' - STORM SEW CL A 1, 12" @ 0.50%
TBF = 9 CU YD
- 68 13' - STORM SEW CL A 1, 12" @ 0.50%
TBF = 2 CU YD
- 69 4' - STORM SEW CL A 1, 12" @ 0.50%
TBF = 1 CU YD
- 70 87' - STORM SEW CL A 1, 36" @ 1.00%
TBF = 7 CU YD
- 71 137' - STORM SEW CL A 1, 36" @ 1.00%
TBF = 245 CU YD
- 72 33' - STORM SEW CL A 1, 30" @ 0.30%
- 73 7' - STORM SEW CL A 1, 12" @ 0.50%
TBF = 1 CU YD
- 74 39' - STORM SEW CL A 1, 12" @ 0.50%
TBF = 11 CU YD
- 75 4' - STORM SEW CL A 1, 12" @ 0.50%
TBF = 1 CU YD
- 76 57' - STORM SEW CL A 1, 30" @ 0.30%
- 76A 117' - STORM SEW CL A 1, 12" @ 1.00%
- 76B 24' - STORM SEW CL A 1, 12" @ 2.90%



	450 E Devon Ave, Suite 300 Itasca, Illinois 60143 Tel: 630.773.3900 Fax: 630.773.3975 www.civiltechinc.com	DESIGNED - JRR DRAWN - JRR CHECKED - RTM DATE - 10/24/2011	REVISED - REVISED - REVISED - REVISED -	STATE OF ILLINOIS DEPARTMENT OF TRANSPORTATION	VERT. 0 HORIZ. 0	SCALES 5 10 20 40	DRAINAGE AND UTILITY	F.A.U. R.T.E. 364 SECTION 02-00051-08-WR COUNTY LAKE TOTAL SHEETS 188 SHEET NO. 78 CONTRACT NO. 63649
--	---	---	--	---	---------------------	-------------------------	-----------------------------	---

SHEET NO. 7 OF 14 SHEETS STA. 1+30 TO STA. 5+00