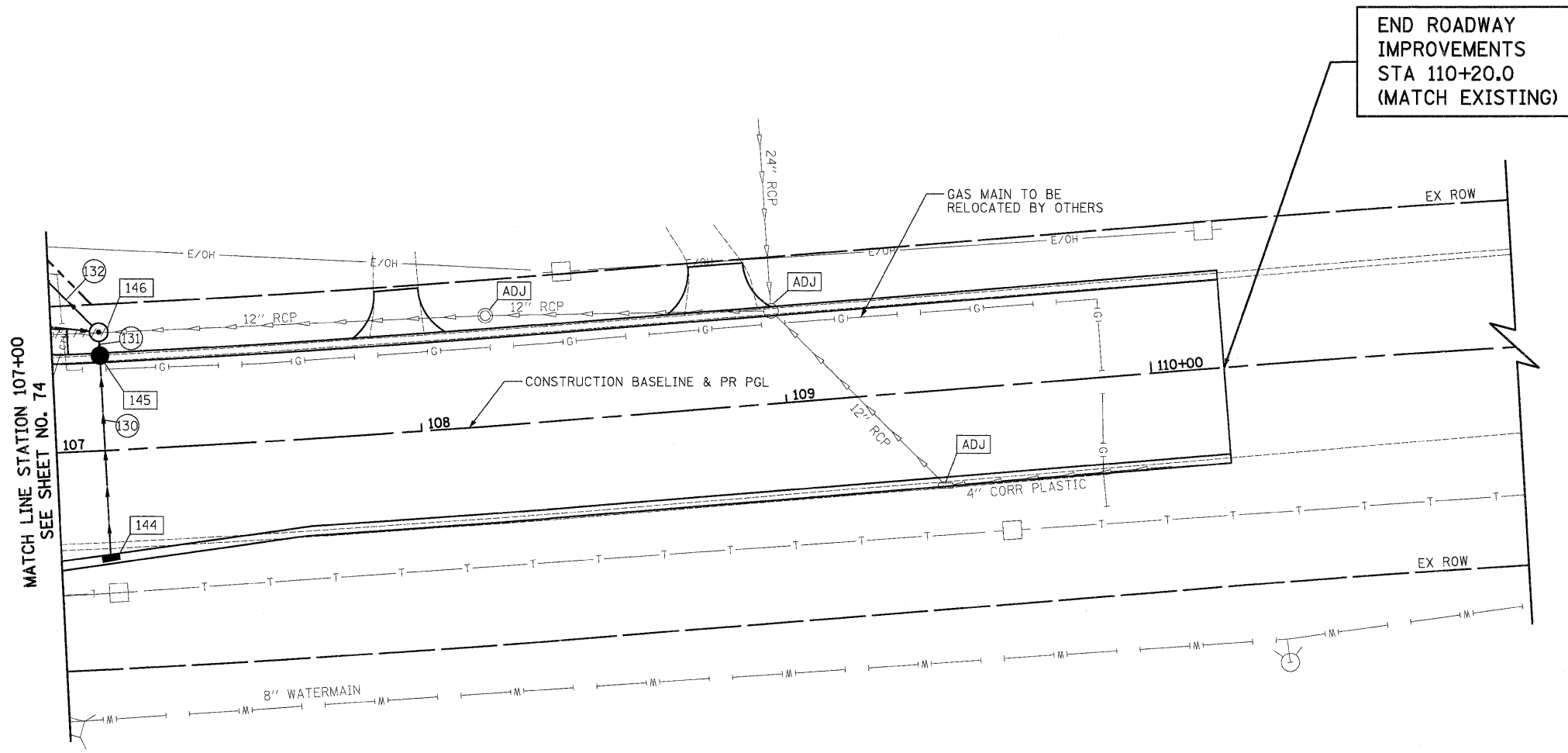


DATE	
BY	
FINAL SURVEY	
SURVEYED	
PLOTTED	
NOTE BOOK	
NO.	

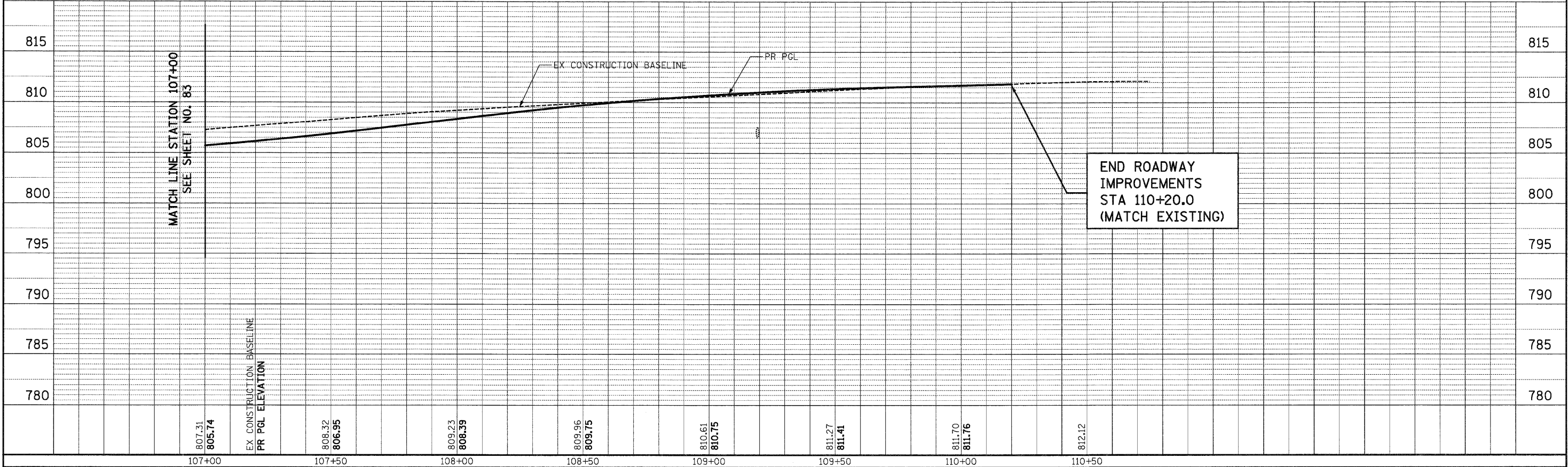
DATE	
BY	
ORIGINAL SURVEY	
SURVEYED	
PLOTTED	
NOTE BOOK	
NO.	



- 144 STA 107+13.3, 29.7' RT
INLETS TA T24F&G
RIM = 806.16
INV = 802.91 (N)
- 145 STA 107+13.3, 25.9' LT
CB TA 4 DIA T24F&G
RIM = 805.69
INV = 800.87 (N)
INV = 802.65 (S)
- 146 STA 107+13.3, 32.3' LT
MAN TA 5 DIA T1F CL
RIM = 807.20
INV = 800.70 (NW)
INV = 800.84 (S)
INV = 802.87 (E)
INV = 800.70 (W)

- 130 53' - STORM SEW SPECIAL, 12" @ 0.50%
TBF = 7 CU YD
- 131 3' - STORM SEW SPECIAL, 12" @ 1.00%
TBF = 1 CU YD
- 132 66' - STORM SEW CL A 1, 15" @ 0.50%

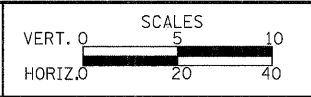
LONG GROVE ROAD



CIVILTECH
450 E Devon Ave, Suite 300
Itasca, Illinois 60143
Tel: 630.773.3900 Fax: 630.773.3975
www.civiltechinc.com

DESIGNED - JRR	REVISED -
DRAWN - JRR	REVISED -
CHECKED - RTM	REVISED -
DATE - 10/24/2011	REVISED -

STATE OF ILLINOIS
DEPARTMENT OF TRANSPORTATION



DRAINAGE AND UTILITY
SHEET NO. 13 OF 14 SHEETS STA. 107+00 TO STA. 110+20

F.A.U. RTE.	SECTION	COUNTY	TOTAL SHEETS	SHEET NO.
364	02-00051-08-WR	LAKE	188	84
CONTRACT NO. 63649				
FED. ROAD DIST. NO. 1 ILLINOIS FED. AID PROJECT				