

| F.A.P. RTE. | SECTION | COUNTY | TOTAL SHEETS | SHEET NO. |
|---------------------|----------------|----------|--------------------|-----------|
| 338 | 10-00084-00-CH | COOK | 63 | 1 |
| FED. ROAD DIST. NO. | | ILLINOIS | CONTRACT NO. 63711 | |

STATE OF ILLINOIS
DEPARTMENT OF TRANSPORTATION
DIVISION OF HIGHWAYS

PLANS FOR PROPOSED FEDERAL-AID HIGHWAY

FAP 338 (ILLINOIS ROUTE 59)
FAU 1304 (SHOE FACTORY ROAD)
INTERSECTION IMPROVEMENTS
SECTION: 10-00084-00-CH
PROJECT: CMM-9003 (596)
COOK COUNTY
C-91-417-10

FOR INDEX OF SHEETS, SEE SHEET NO. 2

FOR LIST OF HIGHWAY STANDARDS, SEE SHEET 2

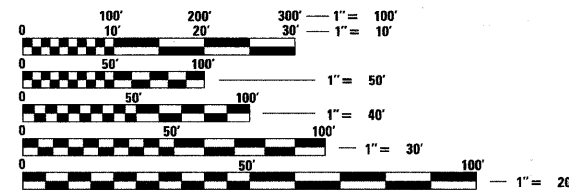
TRAFFIC DATA

ADT:
ILLINOIS ROUTE 59 34,100 VPD (2008) 34,950 VPD (2012)
SHOE FACTORY RD. 7,700 VPD (2008) 8,200 VPD (2012)

| SPEED | POSTED SPEED | DESIGN SPEED |
|-------------------|-----------------------------|--------------|
| ILLINOIS ROUTE 59 | 45 MPH (EXISTING/ PROPOSED) | 45 MPH |
| SHOE FACTORY RD. | 45 MPH (EXISTING/ PROPOSED) | 45 MPH |

DESIGN DESIGNATION

FAP 338 (ILLINOIS ROUTE 59) - PRINCIPAL ARTERIAL
FAU 1304 (SHOE FACTORY RD.) - MINOR ARTERIAL



FULL SIZE PLANS HAVE BEEN PREPARED USING STANDARD ENGINEERING SCALES. REDUCED SIZED PLANS WILL NOT CONFORM TO STANDARD SCALES. IN MAKING MEASUREMENTS ON REDUCED PLANS, THE ABOVE SCALES MAY BE USED.

J.U.L.I.E.
JOINT UTILITY LOCATION INFORMATION FOR EXCAVATION CALL 811

PROFESSIONAL ENGINEER'S SIGN & SEAL EXCLUDING SHEET(S):

J.R. Melhuish 4/5/2012
JACK R. MELHUISH, P.E.
EXPIRES: 11-30-13

PROFESSIONAL ENGINEER'S SIGN & SEAL FOR LIGHTING SHEET(S):

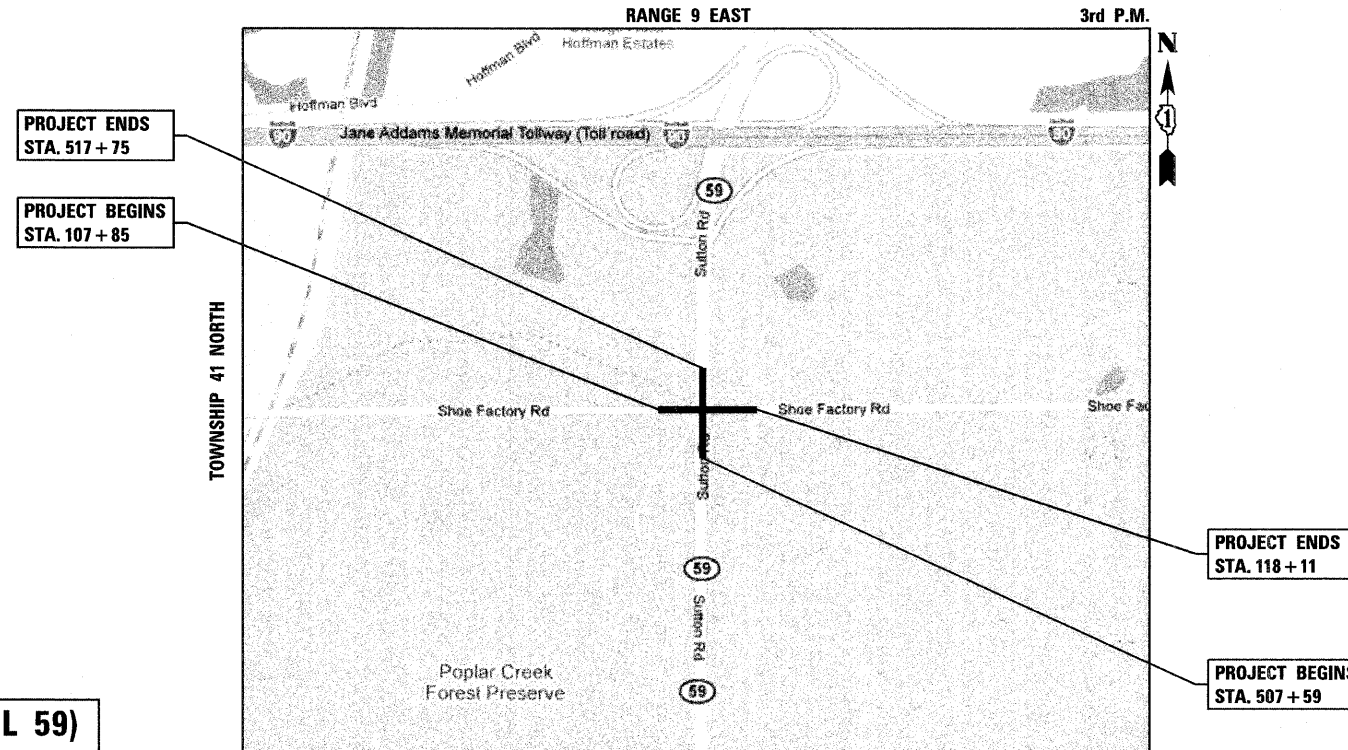
P. Keranen 4/5/12
PHILIP KERANEN, P.E.
EXPIRES: 11-30-13

SHOE FACTORY ROAD AT SUTTON ROAD (IL 59)
COUNTY HIGHWAY A62
SECTION 11-A6204-01-CH

PROJECT ENGINEER: J. ATTANASEO
PROJECT MANAGER: J. MELHUISH

CONTRACT NO. 63711

PROJECT LOCATION MAP
HANOVER TOWNSHIP
N.T.S.
RANGE 9 EAST



PROJECT LENGTH
NET LENGTH OF IMPROVEMENT (ILLINOIS ROUTE 59) = 1,013 FT (0.192 MI)
NET LENGTH OF PROJECT (SHOE FACTORY RD.) = 1,026 FT (0.194 MI)
GROSS LENGTH OF PROJECT = 2,039 FT (0.386 MI)



STATE OF ILLINOIS
DEPARTMENT OF TRANSPORTATION
DIVISION OF HIGHWAYS

APPROVED 4/5 2012
Gary Salavitch
VILLAGE ENGINEER, HOFFMAN ESTATES

PASSED APRIL 6 2012
C. Holt C. HOLT
DISTRICT ONE ENGINEER OF LOCAL ROADS AND STREETS

RELEASING FOR BID
BASED ON LIMITED REVIEW APRIL 6 2012
Diane M. O'Keefe
DEPUTY DIRECTOR OF HIGHWAYS, REGION ONE ENGINEER

420 NORTH FRONT STREET, SUITE 100 | McHENRY, ILLINOIS 60050
Phone: 815.385.1778 | Toll Free: 800.728.7805 | Fax: 815.385.1781 | HRGreen.com
ILLINOIS PROFESSIONAL DESIGN FIRM #184-001322

PRINTED BY THE AUTHORITY
OF THE STATE OF ILLINOIS

PROGRAM AND OFFICE ENGINEER: CHARLES F. RIDDLE, P.E. 847-705-4406 SCHAUMBURG, IL

COMPANY NAME: PROJECT CONTACT: CLIENT: DATE PLOTTED: FILE NAME: PLOT DRIVER: PEN TABLE: