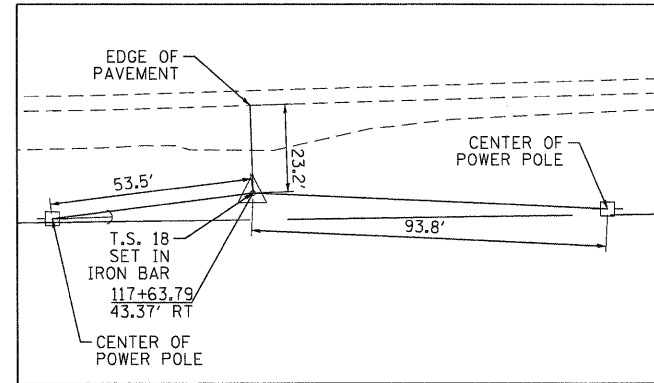
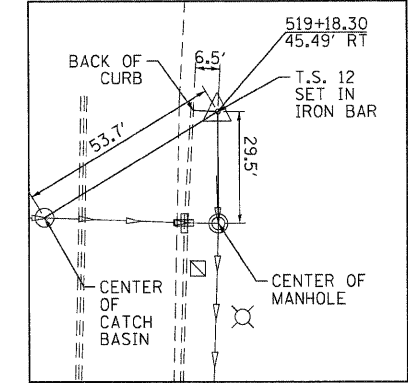


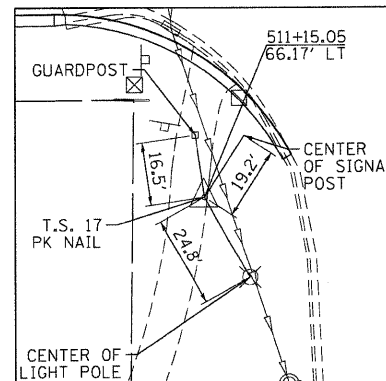
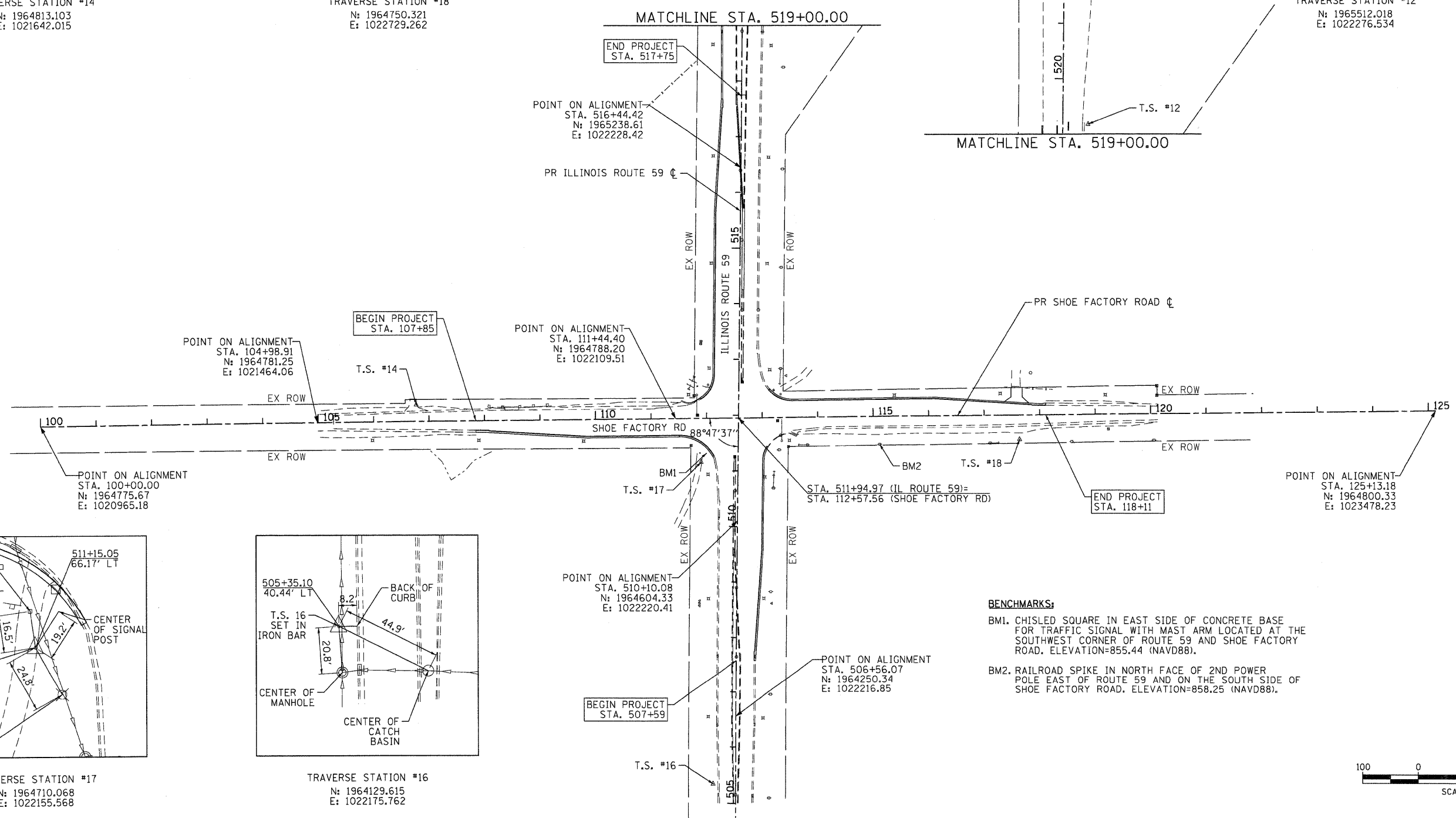
TRAVERSE STATION #14
 N: 1964813.103
 E: 1021642.015



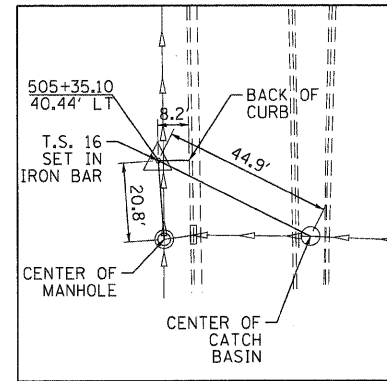
TRAVERSE STATION #18
 N: 1964750.321
 E: 1022729.262



TRAVERSE STATION #12
 N: 1965512.018
 E: 1022276.534

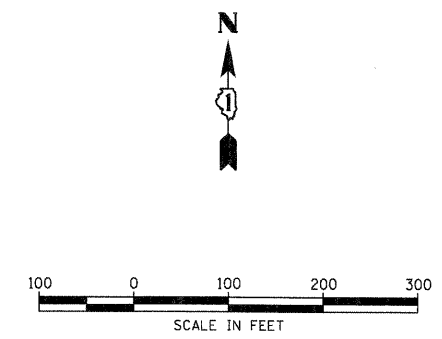


TRAVERSE STATION #17
 N: 1964710.068
 E: 1022155.568



TRAVERSE STATION #16
 N: 1964129.615
 E: 1022175.762

BENCHMARKS:
 BM1. CHISLED SQUARE IN EAST SIDE OF CONCRETE BASE FOR TRAFFIC SIGNAL WITH MAST ARM LOCATED AT THE SOUTHWEST CORNER OF ROUTE 59 AND SHOE FACTORY ROAD. ELEVATION=855.44 (NAVD88).
 BM2. RAILROAD SPIKE IN NORTH FACE OF 2ND POWER POLE EAST OF ROUTE 59 AND ON THE SOUTH SIDE OF SHOE FACTORY ROAD. ELEVATION=858.25 (NAVD88).



COMPANY NAME: HRGreen
 PROJECT CONTACT: jmelhus
 CLIENT: HRGreen
 DATE PLOTTED: 4/5/2012 5:03:15 PM
 FILE NAME: 10-00084-00-01-0177-16-01.dgn
 PLOT SCALE: 1"=100'
 PEN TABLE: Standard-Trans.tbl



USER NAME = jmelhus	DESIGNED - JRM	REVISED -
PLOT SCALE = 1"=100'	DRAWN -	REVISED -
PLOT DATE = 4/5/2012	CHECKED - TEH	REVISED -
	DATE - 4/5/12	REVISED -

**STATE OF ILLINOIS
 DEPARTMENT OF TRANSPORTATION**

**ALIGNMENT, TIE AND BENCHMARK PLAN
 IL 59 & SHOE FACTORY RD**

SCALE: 1"=100' SHEET NO. 1 OF 1 SHEETS STA. TO STA.

F.A.P. RTE.	SECTION	COUNTY	TOTAL SHEETS	SHEET NO.
338	10-00084-00-CH	COOK	63	8
CONTRACT NO. 63711				
FED. ROAD DIST. NO.		ILLINOIS FED. AID PROJECT		