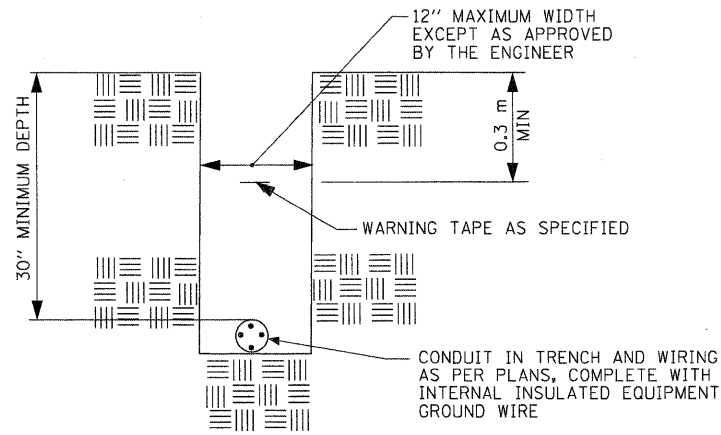
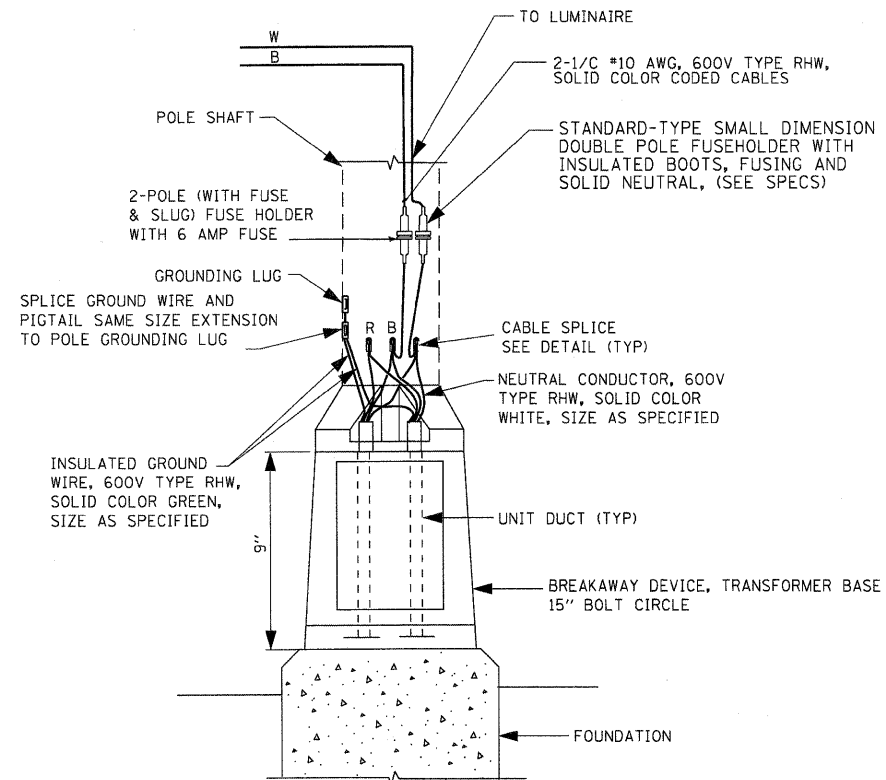


SPLICING DETAIL  
N.T.S.



TYPICAL CONDUIT IN TRENCH DETAIL  
N.T.S.



POLE BASE WIRING DIAGRAM  
SINGLE MAST ARM  
N.T.S.

COMPANY NAME: HRGreen  
 PROJECT CONTACT: HRGreen.com  
 CLIENT: Illinois Professional Design Firm  
 DATE PLOTTED: 4/5/2012 5:45:51 PM  
 FILE NAME: 017-lighting05.dgn  
 PLOT ORIGIN: hrgreen  
 PEN TABLE: standard.trens.tbl



USER NAME = jme1hu	DESIGNED - PK	REVISED -
PLOT SCALE = N.T.S.	DRAWN - JPA	REVISED -
PLOT DATE = 4/5/2012	CHECKED - JRM	REVISED -
	DATE - 4/5/12	REVISED -

STATE OF ILLINOIS  
DEPARTMENT OF TRANSPORTATION

LIGHTING DETAILS			
IL ROUTE 59 AT SHOE FACTORY ROAD			
SCALE: N.T.S.	SHEET NO. 5 OF 7 SHEETS	STA. TO STA.	

F.A.P. RTE. 338	SECTION 10-00084-00-CH	COUNTY COOK	TOTAL SHEETS 63	SHEET NO. 39
FED. ROAD DIST. NO. ILLINOIS FED. AID PROJECT			CONTRACT NO. 63711	