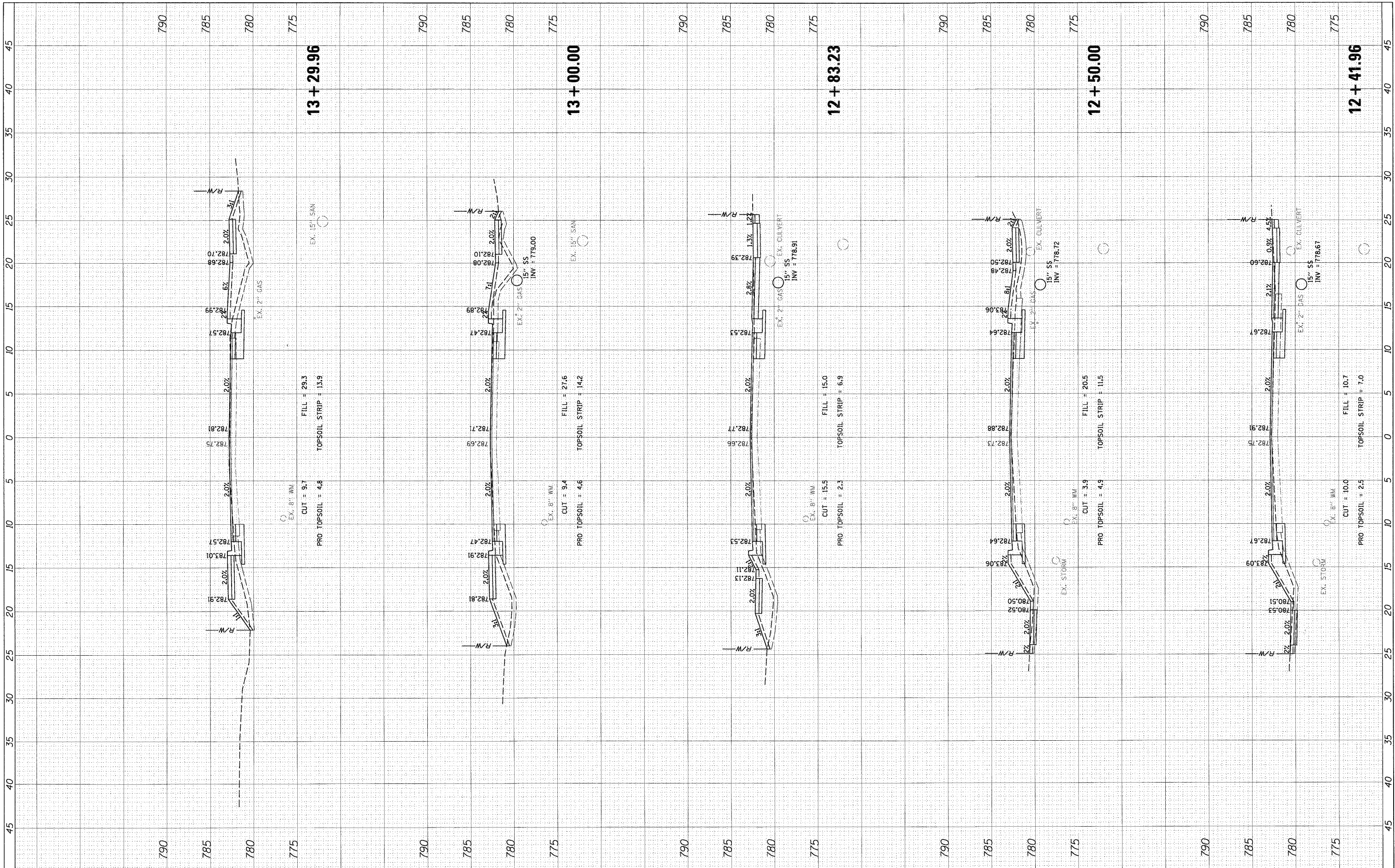


FINAL SURVEY	BY	DATE
SURVEYED		
PLOTTED		
NOTE BOOK		
AREAS CHECKED		
NO.		

ORIGINAL SURVEY	BY	DATE
SURVEYED		
PLOTTED		
NOTE BOOK		
AREAS CHECKED		
NO.		



FILE NAME = PXS\_HIGHLAND.sht  
 USER NAME = mvd@dr-ar  
 DESIGNED - SNS  
 DRAWN - PWN  
 CHECKED - MEK  
 DATE - 09/02/2011

DESIGNED - SNS	REVISD -
DRAWN - PWN	REVISD -
CHECKED - MEK	REVISD -
DATE - 09/02/2011	REVISD -

**STATE OF ILLINOIS  
 DEPARTMENT OF TRANSPORTATION**

**CROSS SECTIONS  
 HIGHLAND ROAD**

SCALE: 1" = 5'    SHEET NO. OF SHEETS    STA. 12+41.96 TO STA. 13+29.96

F.A.U. RTE.	SECTION	COUNTY	TOTAL SHEETS	SHEET NO.
204	12-00060-00-WR	LAKE	50	27
				CONTRACT NO.
				ILLINOIS FED. AID PROJECT