

STATE OF ILLINOIS  
DEPARTMENT OF TRANSPORTATION  
DIVISION OF HIGHWAYS

F.A.P. RTE.	SECTION	COUNTY	TOTAL SHEETS	SHEET NO.
742	34R	WINNEBAGO	431	1
ILLINOIS			CONTRACT NO. 64515	
* 491 + 10 = 501				

D-92-015-00

FOR INDEX OF SHEETS & STANDARDS, SEE SHEET NO. 2

**PROPOSED  
HIGHWAY PLANS**

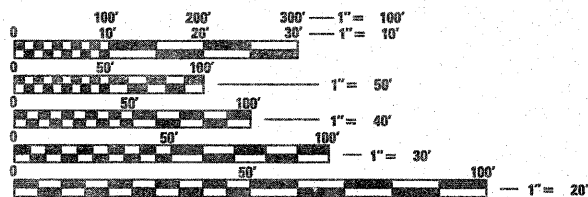
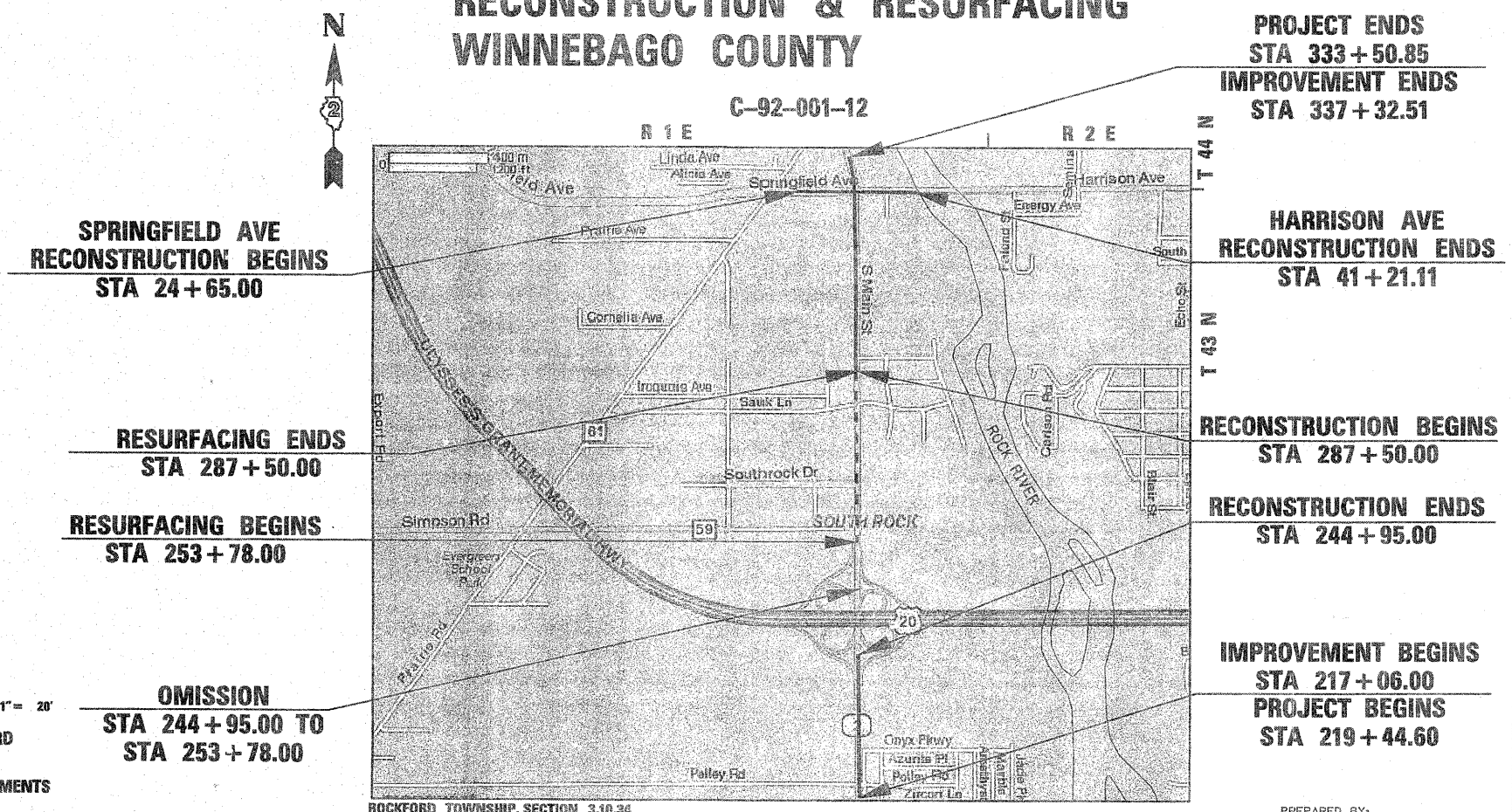
Design Designation - 1810(12) Arterial 4.96 (PCC-20)

FAP ROUTE 742 (ILLINOIS ROUTE 2)  
SECTION 34R  
PROJECT: HPP-F-0732 (136)  
RECONSTRUCTION & RESURFACING  
WINNEBAGO COUNTY

Township: Rockford  
Northwest Rockford Section: 34  
Southwest Rockford Section: 3,10



LOCATION OF SECTION INDICATED THUS: - [shaded box] -



FULL SIZE PLANS HAVE BEEN PREPARED USING STANDARD ENGINEERING SCALES. REDUCED SIZED PLANS WILL NOT CONFORM TO STANDARD SCALES. IN MAKING MEASUREMENTS ON REDUCED PLANS, THE ABOVE SCALES MAY BE USED.

J.U.L.I.E.  
JOINT UTILITY LOCATION INFORMATION FOR EXCAVATION  
1-800-892-0123  
OR 811

PROJECT MANAGER: TRACI HELFRICH 815-284-5932  
email: Traci.Helfrich@illinois.gov

CONSULTANT SERVICES: COREY STOUT 815-965-6400

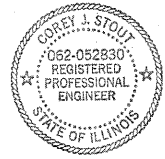
CONTRACT NO. 64515

WINNEBAGO COUNTY SECTION 34R FAP ROUTE 742

**LOCATION MAP**  
(NOT TO SCALE)

**PROJECT LENGTH**

GROSS LENGTH = 11,406 FT. = 2.16 MILE  
OMISSION LENGTH = 883 FT. = 0.17 MILE  
NET LENGTH = 10,523 FT. = 1.99 MILE



I HEREBY CERTIFY THAT THESE PLANS WERE PREPARED BY ME OR UNDER MY DIRECT SUPERVISION AND THAT I AM A DULY REGISTERED PROFESSIONAL ENGINEER UNDER THE LAWS OF THE STATE OF ILLINOIS.

Corey J. Stout  
REG. NO. 062-052830 DATE 1/18/2012 RENEWAL DATE 11/30/2013

STATE OF ILLINOIS  
DEPARTMENT OF TRANSPORTATION  
DIVISION OF HIGHWAYS

SUBMITTED February 7, 2012

Deputy Director of Highways, Region Engineer  
March 23, 2012  
John D. Baranzelli, P.E. acting  
ENGINEER OF DESIGN AND ENVIRONMENT

March 23, 2012  
William R. Frey, Jr. acting  
DIRECTOR OF HIGHWAYS, CHIEF ENGINEER

**PRINTED BY THE AUTHORITY  
OF THE STATE OF ILLINOIS**