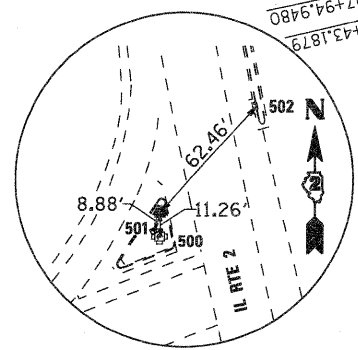
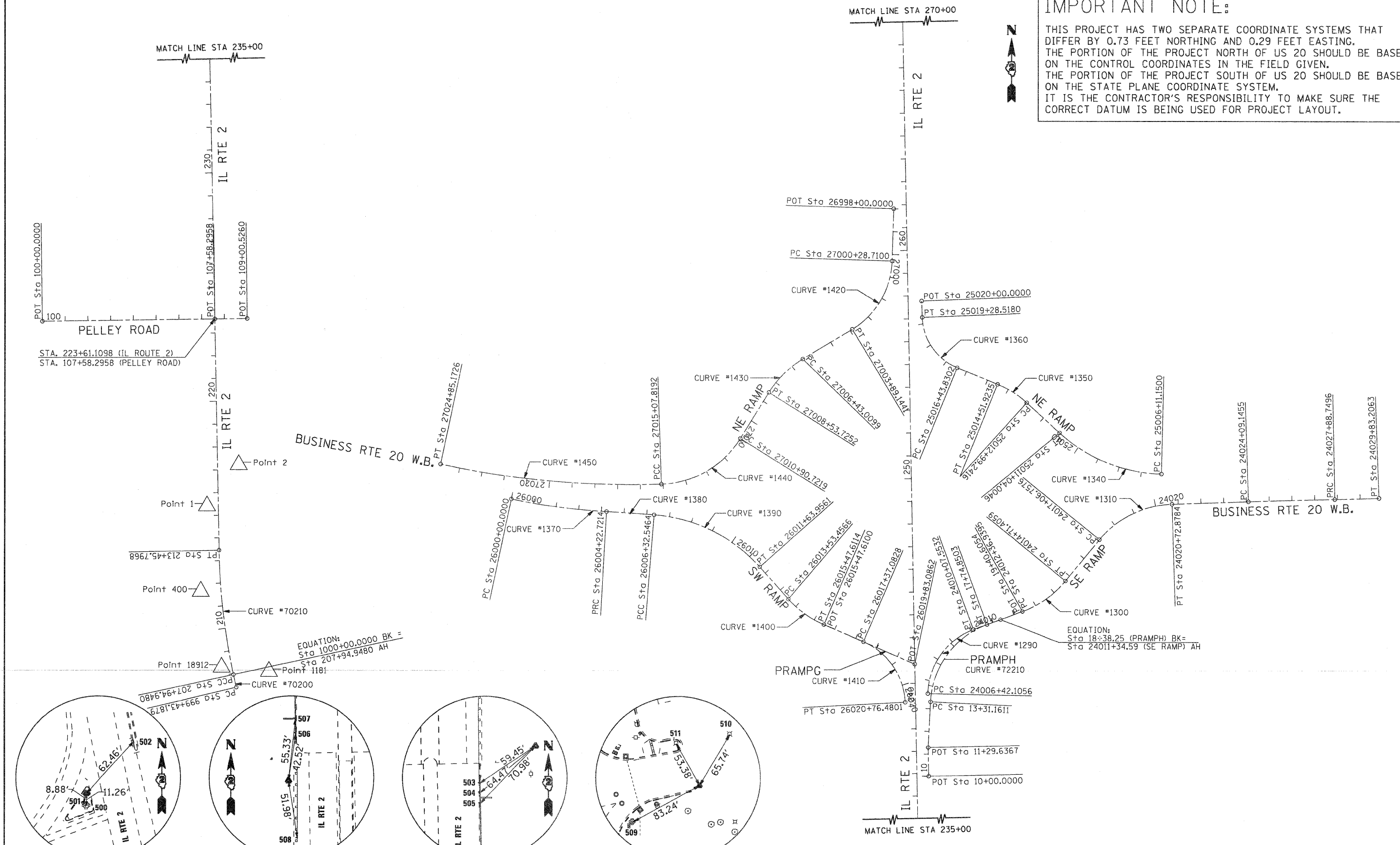
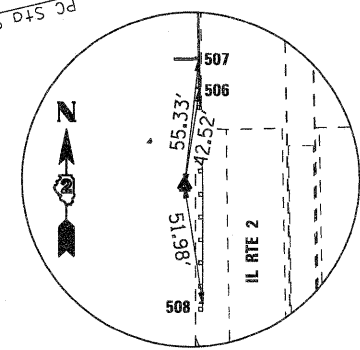


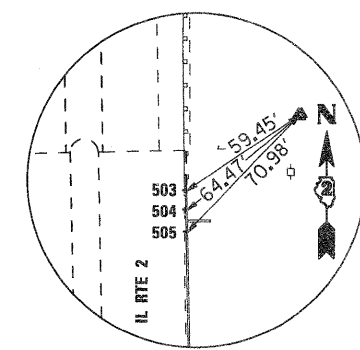
IMPORTANT NOTE:
 THIS PROJECT HAS TWO SEPARATE COORDINATE SYSTEMS THAT DIFFER BY 0.73 FEET NORTHING AND 0.29 FEET EASTING. THE PORTION OF THE PROJECT NORTH OF US 20 SHOULD BE BASED ON THE CONTROL COORDINATES IN THE FIELD GIVEN. THE PORTION OF THE PROJECT SOUTH OF US 20 SHOULD BE BASED ON THE STATE PLANE COORDINATE SYSTEM. IT IS THE CONTRACTOR'S RESPONSIBILITY TO MAKE SURE THE CORRECT DATUM IS BEING USED FOR PROJECT LAYOUT.



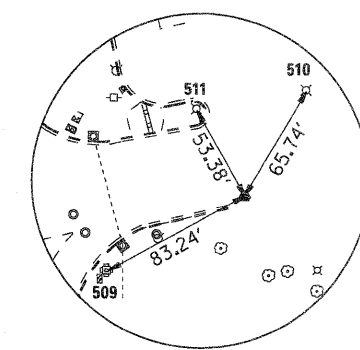
HORIZONTAL CONTROL POINT No. 18912



HORIZONTAL CONTROL POINT No. 1



HORIZONTAL CONTROL POINT No. 2



HORIZONTAL CONTROL POINT No. 1181

FILE NAME = G:\2010\TRANS\1010\10\10\HVC\01500-HV	USER NAME = petp	DESIGNED -	REVISED -	STATE OF ILLINOIS DEPARTMENT OF TRANSPORTATION	FAP 742 (IL 2) HORIZONTAL AND VERTICAL CONTROL			F.A.P. RTE. = 742	SECTION = 34R	COUNTY = WINNEBAGO	TOTAL SHEETS = 491	SHEET NO. = 50
PLOT SCALE = 200.0000' / IN.	CHECKED -	REVISED -	REVISED -		SCALE: 1" = 200'	SHEET NO. OF	SHEETS	STA. TO STA.	CONTRACT NO. 64515			
PLOT DATE = 1/17/2012	DATE -	REVISED -	REVISED -		ILLINOIS FED. AID PROJECT							

