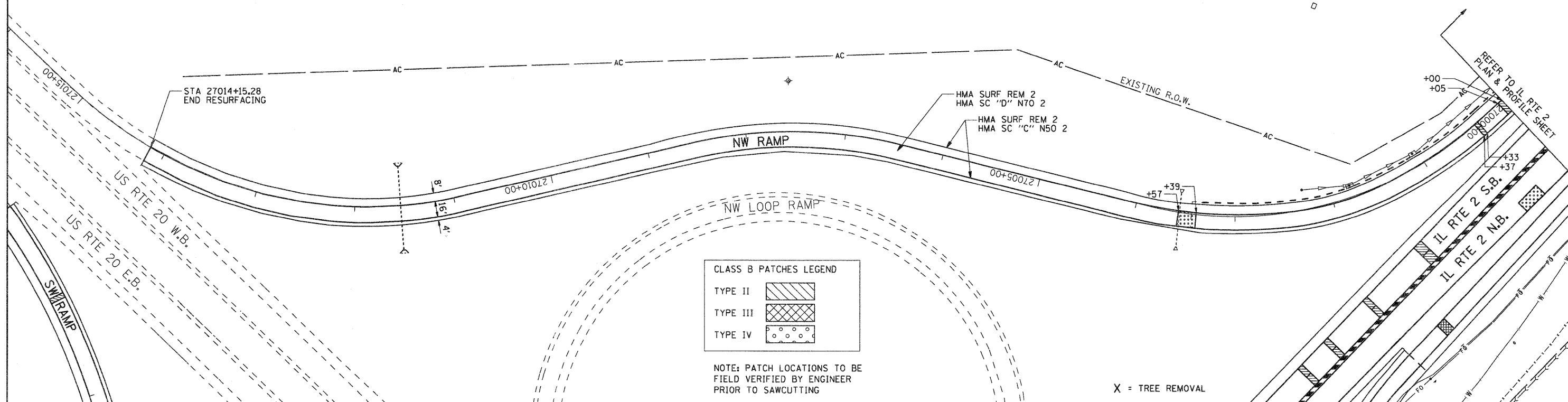


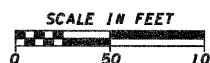
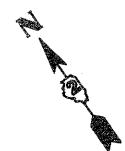
# NORTHWEST RAMP



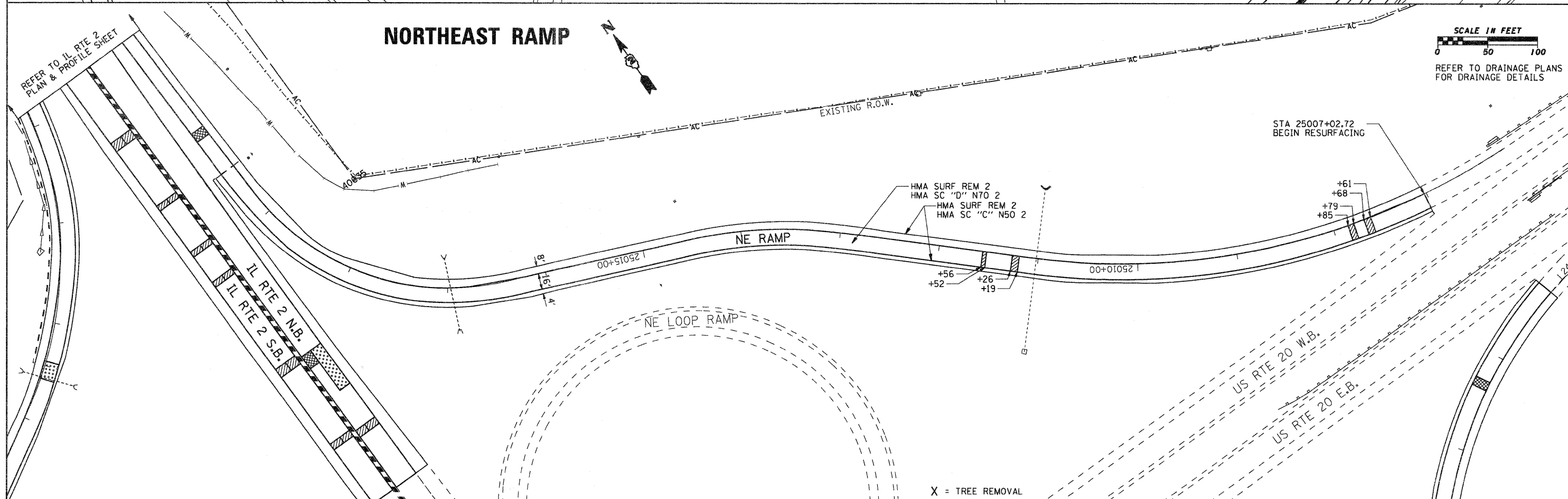
REFER TO DRAINAGE PLANS FOR DRAINAGE DETAILS



# NORTHEAST RAMP



REFER TO DRAINAGE PLANS FOR DRAINAGE DETAILS



FILE NAME =	USER NAME = petp	DESIGNED -	REVISED -	<b>STATE OF ILLINOIS DEPARTMENT OF TRANSPORTATION</b>	<b>US ROUTE 20 BYPASS NORTHWEST &amp; NORTHEAST RAMPS</b>			F.A.P. RTE.	SECTION	COUNTY	TOTAL SHEETS	SHEET NO.
gr\2010\trans\106001\dgn\Plan and Prof	e\OVERLAY RAMPS\RAMPS.dgn	DRAWN -	REVISED -		742	34R	WINNEBAGO	491	88			
	PLOT SCALE = 50.0000' / IN.	CHECKED -	REVISED -		SCALE: 1" = 50'				SHEET NO. OF SHEETS		CONTRACT NO. 64515	
	PLOT DATE = 1/25/2012	DATE -	REVISED -		STATIONING				ILLINOIS FED. AID PROJECT			