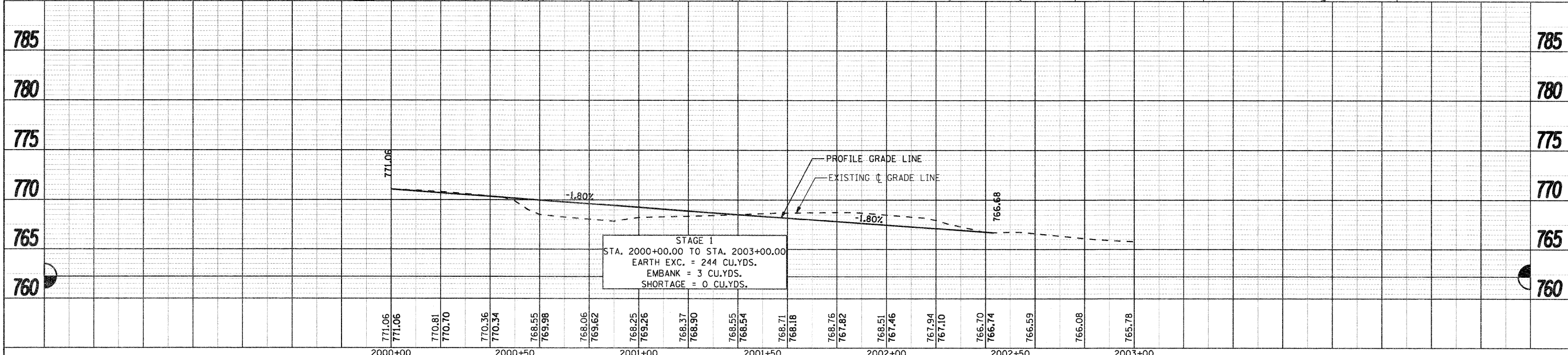
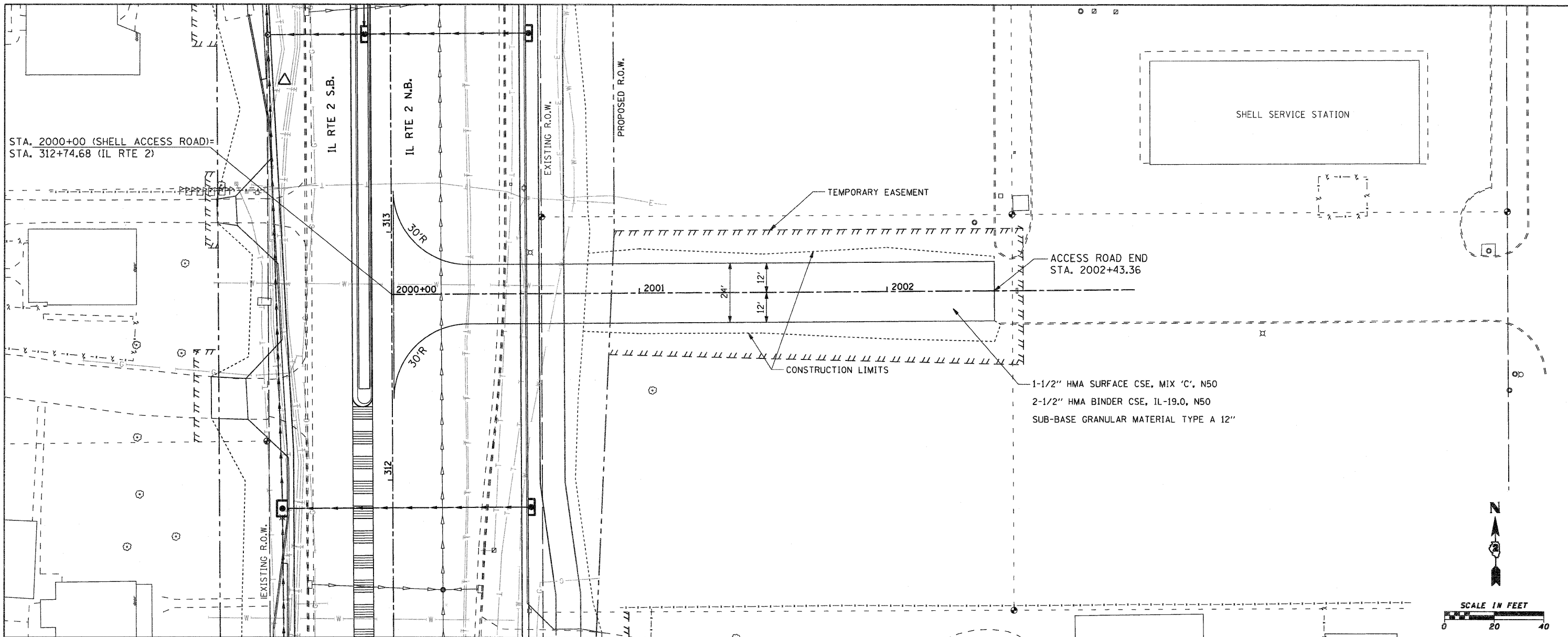


PLAN	REVISED	DATE
NOTE BOOK	ALIGNED	BY
NO.	CHECKED	
	BY	
	FILE NAME	

PROFILE	REVISED	DATE
NOTE BOOK	GRADES CHECKED	BY
NO.	BY	
	NOTED	
	STRUCTURE	
	NOTATION	



STAGE 1
STA. 2000+00.00 TO STA. 2003+00.00
EARTH EXC. = 244 CU.YDS.
EMBANK = 3 CU.YDS.
SHORTAGE = 0 CU.YDS.

FILE NAME =	USER NAME = petp	DESIGNED - CJS	REVISED -	STATE OF ILLINOIS DEPARTMENT OF TRANSPORTATION	FAP 742 (IL 2) TEMPORARY SHELL ACCESS ROAD	F.A.P. RTE. 742	SECTION 34R	COUNTY WINNEBAGO	TOTAL SHEETS 491	SHEET NO. 89		
g:\2010\trans\bl0401\dgn\plan and profile	shell access road\001500\SHELL_ACC_RD.dgn	DRAWN - TSG	REVISED -			SCALE: 1" = 20'	SHEET NO. OF SHEETS	STA. 2000+00 TO STA. 2003+00	CONTRACT NO. 64515			
PLOT SCALE = 20.0000' / IN.	CHECKED - FJH	DATE -	REVISED -			ILLINOIS FED. AID PROJECT						
PLOT DATE = 1/25/2012	DATE -	REVISED -										