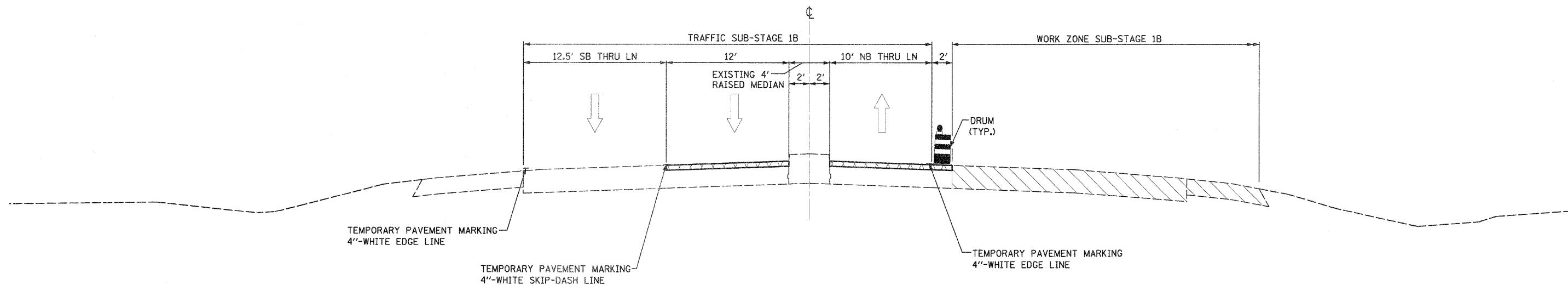
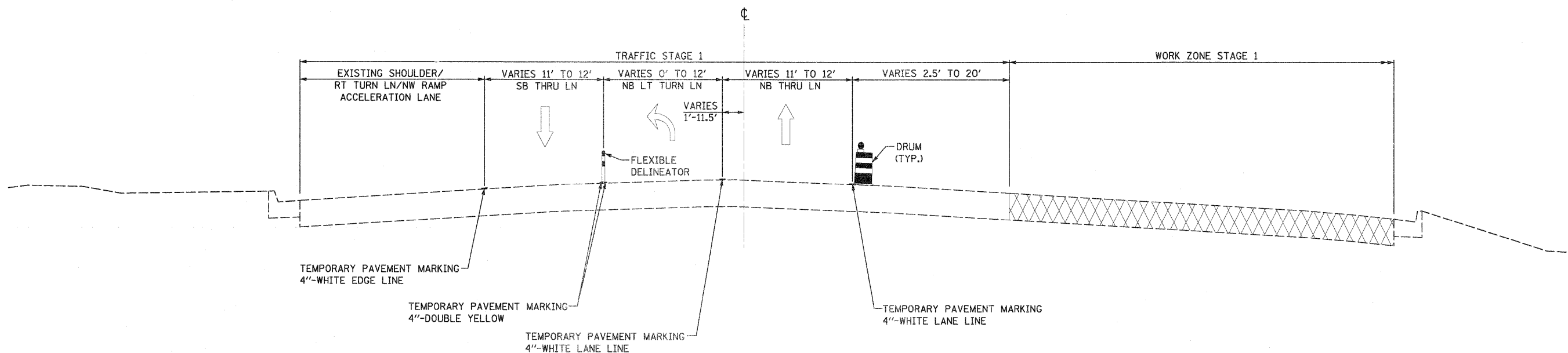


IL ROUTE 2
 STA. 253+78.00 - STA. 262+94.62



IL ROUTE 2
 STA. 267+03.46 - STA. 269+92.30
 STA. 278+42.00 - STA. 282+26.26



FILE NAME = D201500-sh1-staging22_typical03.dgn	USER NAME = TERRA	DESIGNED - BCB	REVISED -	STATE OF ILLINOIS DEPARTMENT OF TRANSPORTATION	MAINTENANCE OF TRAFFIC STAGE I TYPICAL SECTIONS	F.A. RTE. 742	SECTION 34R	COUNTY WINNEBAGO	TOTAL SHEETS 491	SHEET NO. 93	
PLOT SCALE = 10.0000' / IN.	CHECKED - DPA	REVISED -	SCALE:			SHEET NO. OF SHEETS	STA. TO STA.	ILLINOIS FED. AID PROJECT			
PLOT DATE = 1/16/2012	DATE - 01/17/12	REVISED -									