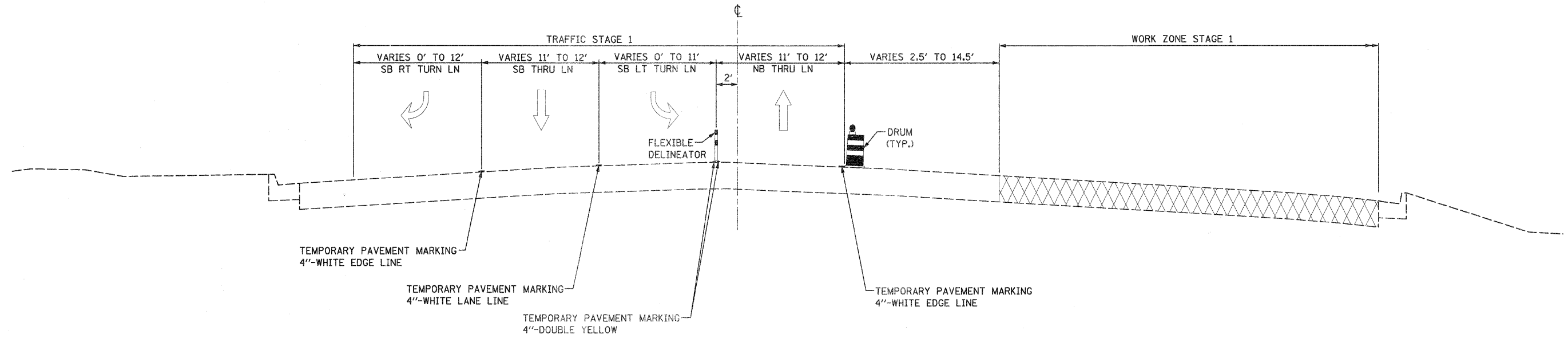
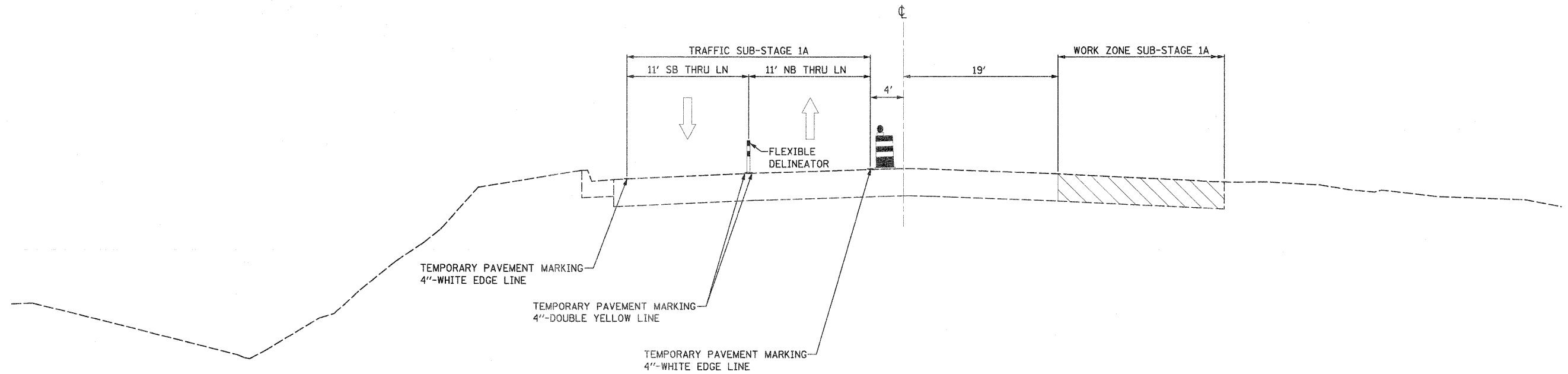


IL ROUTE 2
 STA. 270+59.86 - STA. 278+42.00
 STA. 283+31.73- STA. 291+00.00



IL ROUTE 2
 STA. 291+00.00 - STA. 304+50.00



FILE NAME = D201502-ahf-staging02_typical04.dgn	USER NAME = TERRA	DESIGNED - BCB	REVISED -	STATE OF ILLINOIS DEPARTMENT OF TRANSPORTATION	MAINTENANCE OF TRAFFIC STAGE I TYPICAL SECTIONS	F.A. RTE. 742	SECTION 34R	COUNTY WINNEBAGO	TOTAL SHEETS 491	SHEET NO. 94		
PLLOT SCALE = 10.0000' / IN.	CHECKED - DPA	REVISED -	SCALE:			SHEET NO. OF SHEETS	STA. TO STA.	CONTRACT NO. 64515				
PLLOT DATE = 1/16/2012	DATE - 01/17/12	REVISED -	ILLINOIS FED. AID PROJECT									